

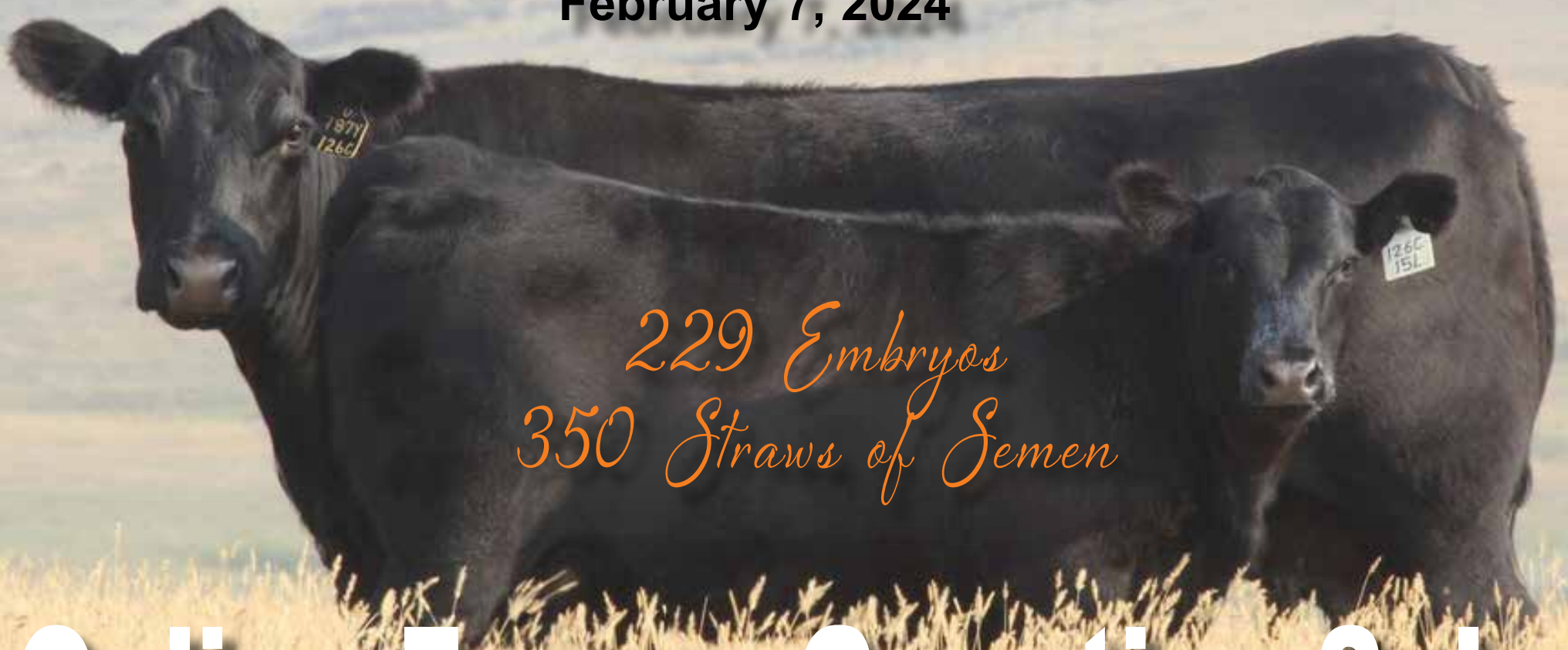


ONLINE CLOSEOUT

Online with DLMS
DLMS.CA

Peak Dot  *Ranch Ltd.*

February 7, 2024



229 Embryos
350 Straws of Semen

Online Frozen Genetics Sale

*Let us know if we can
be of assistance.*



Peak Dot  Ranch Ltd.

Carson Moneo

306-266-4414

Clay Moneo

306-266-4411

Email: peakdot@gmail.com TEXT: 306-640-8760



Elite Embryos and Semen Sale

Race Horse Closeout Wednesday Feb. 7 at 7:00 pm C.S.T

FARM GATE TIMED AUCTIONS

ONLINE CLOSEOUT

Online with DLMS

DLMS.CA

Online Frozen Genetics Sale

Race Horse Closeout Wednesday Feb. 7 at 7:00 pm C.S.T

FARM GATE TIMED AUCTIONS

February 7, 2024



SALE STAFF

Scott Bohrson.....Consultant (Bohrson Marketing Services) (403) 370-3010
Rob Voice.....Consultant (Bohrson Marketing Services) (306) 270-6082
Taylor RichardsConsultant (Bohrson Marketing Services) (306) 821-4169



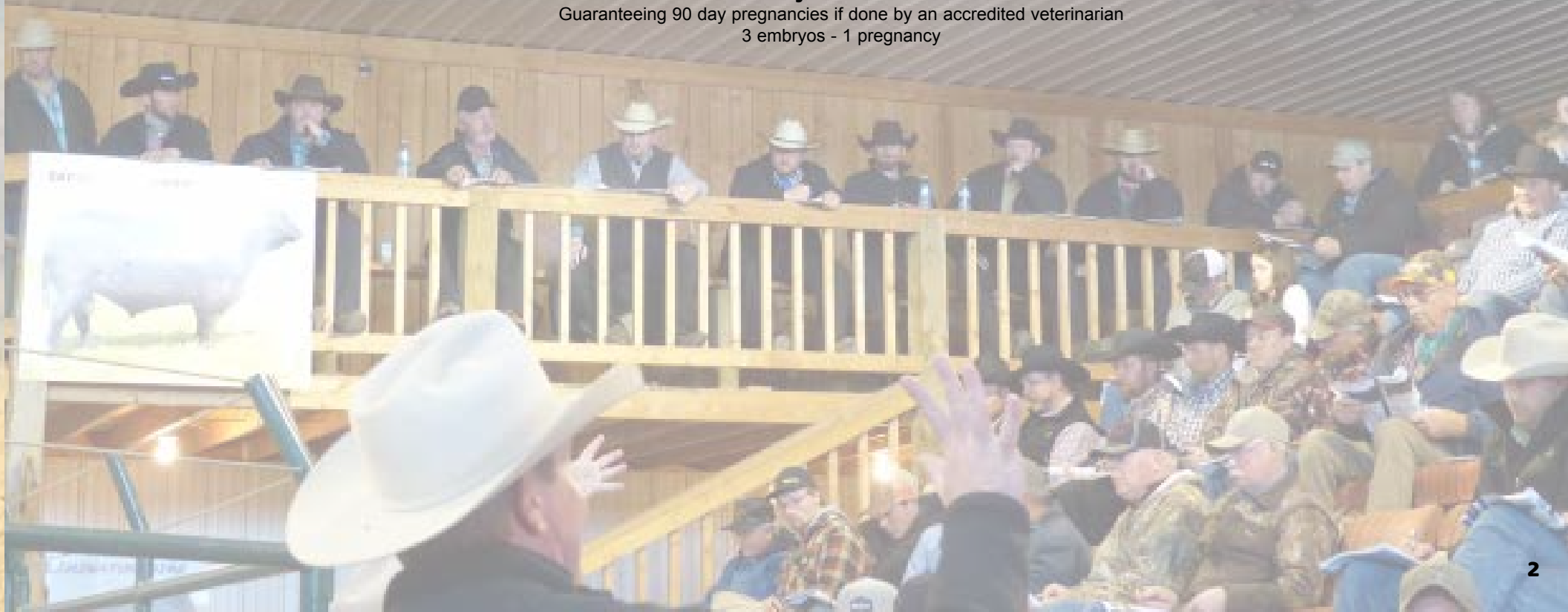
SALE STAFF

Chris Poley.....(T bar C Cattle Co.) (306) 220-5006
Ben Wright.....(T bar C Cattle Co.) 1-519-374-3335
Shane Michelson.....(T bar C Cattle Co.) 1-403-363-9973
Levi Rimke.....(T bar C Cattle Co.) 1-704-851-4515

Leave an order. If your busy or tied up and can't get to your computer or feel more comfortable using us or our sale staff please feel to contact any of the Sale Staff above and they will represent you in a professional manner. For assistance on registering and bidding contact Mark Shologan at 780-699-5082

Embryo Guarantees

Guaranteeing 90 day pregnancies if done by an accredited veterinarian
3 embryos - 1 pregnancy



GABLE *Embryos* Lots 1- 30



Scheifelbein Gable 311

PEAK DOT BARBARA 807H

Embryos are qualified for Canada & USA



Lot 1

3 conventional Embryos
By Scheifelbein Gable 311

Lot 2

3 conventional Embryos
By Scheifelbein Gable 311

Lot 3

3 conventional Embryos
By Scheifelbein Gable 311

Lot 4

3 conventional Embryos
By Scheifelbein Gable 311

Lot 5

3 conventional Embryos
By Scheifelbein Gable 311



Schiefelbein Gable 311
Sire of Embryos

SITZ RESILIENT 10208
SCHIEFELBEIN GABLE 311
FROSTY ELBA LIZZY 5569
ELLINGSON PROFOUND 8155
PEAK DOT BARBARA 807H
PEAK DOT BARBARA 483A

Peak Dot Barbara 807H is a model female from our program. Perfect udder, perfect feet, long level hip, wide based and very sound structured. Her dam Peak Dot Barbara 483A is a proven donor with 35 progeny. We have an extremely nice set of daughters at Peak Dot and her sons have been topping our bull sales. We think the world of this mating to Gable and would expect to see sons with an abundance of muscle, body shape and depth of rib and daughters that are easy fleshing, deep ribbed with beautiful udders.

Embryos stored at BoviGen - Moose Jaw SK

BW	WW	YW	MILK	CW	MARB	REA	SC
1.6	85	140	24	57	0.48	0.65	351

PEAK DOT ANNIE K 246E

Embryos are qualified for Canada & USA

Lot 6

3 conventional Embryos
By Scheifelbein Gable 311

Lot 7

3 conventional Embryos
By Scheifelbein Gable 311

Lot 8

3 conventional Embryos
By Scheifelbein Gable 311

Lot 9

2 conventional Embryos
By Scheifelbein Gable 311



Schiefelbein Gable 311
Sire of Embryos

SITZ RESILIENT 10208
SCHIEFELBEIN GABLE 311
FROSTY ELBA LIZZY 5569
PEAK DOT PRIME 733B
PEAK DOT ANNIE K 246E
ANNIE K OF PEAK DOT 722W

Peak Dot Annie K 246E is a dominating Peak Dot Prime daughter with capacity, volume and fleshing ability. A real power donor with a nice balance of phenotype and numbers. Her beautiful udder, excellent feet and proven track record combined with her maternal lineage made it a simple decision to introduce this cow to our elite donor pen.

Embryos stored at BoviGen - Moose Jaw SK

BW	WW	YW	MILK	CW	MARB	REA	SC
2.3	76	129	26	54	0.50	0.64	308

PEAK DOT LADY 152F

Embryos are qualified for Canada & USA



Lot 10

3 conventional Embryos
By Scheifelbein Gable 311

Lot 11

3 conventional Embryos
By Scheifelbein Gable 311

Lot 12

3 conventional Embryos
By Scheifelbein Gable 311



Schiefelbein Gable 311
Sire of Embryos

SITZ RESILIENT 10208
SCHIEFELBEIN GABLE 311
FROSTY ELBA LIZZY 5569
HOOVER NO DOUBT
PEAK DOT LADY 152F
PEAK DOT LADY 10C

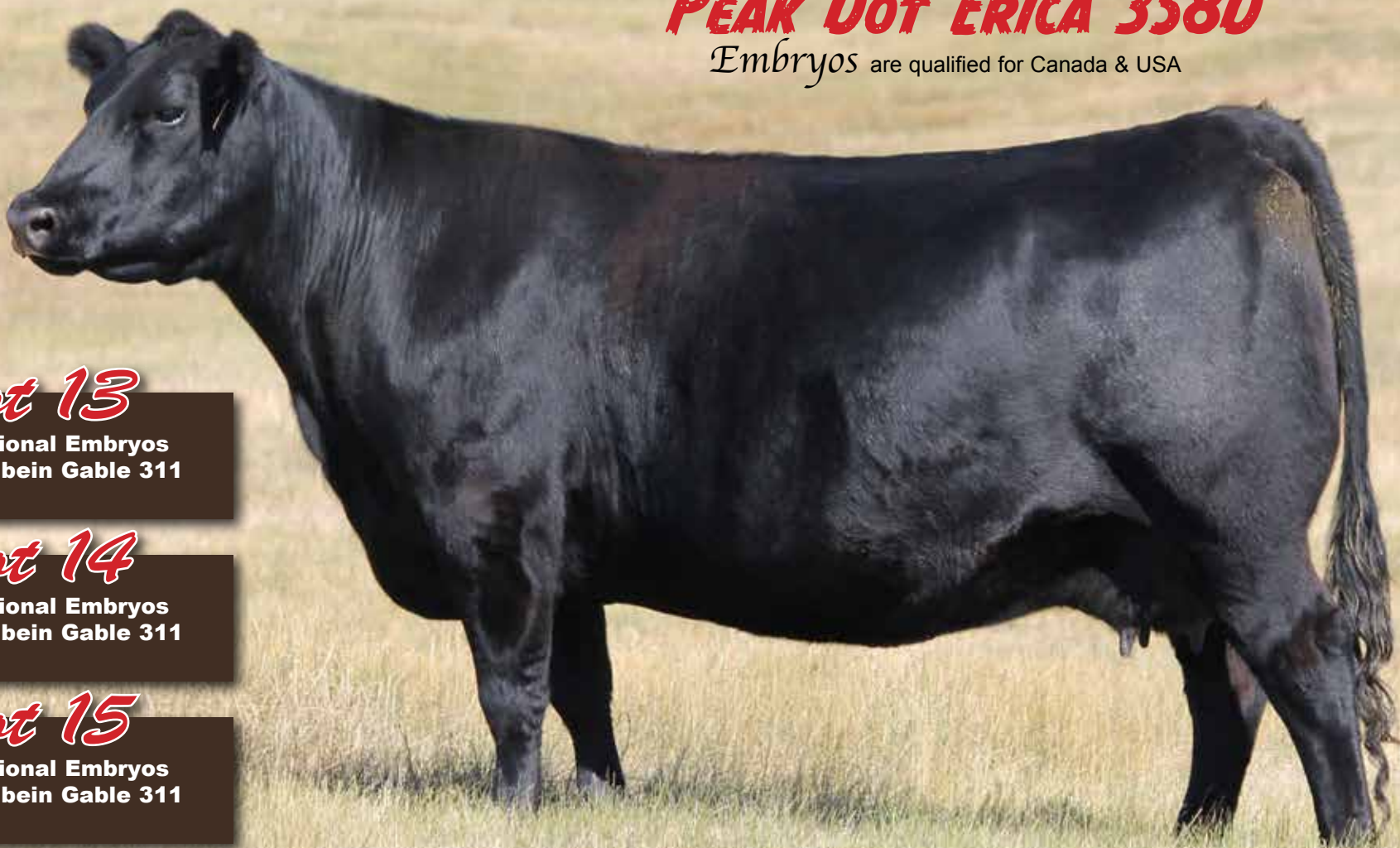
Coming from the very popular Lady cow family at Peak Dot, Peak Dot Lady 152F is backed by 3 generations of consecutive Donors representing one of the best maternal lines in the business.

Embryos stored at BoviGen - Moose Jaw SK

BW	WW	YW	MILK	CW	MARB	REA	SC
0.7	74	129	28	58	0.57	0.82	339

PEAK DOT ERICA 358D

Embryos are qualified for Canada & USA



Lot 13

3 conventional Embryos
By Scheifelbein Gable 311

Lot 14

3 conventional Embryos
By Scheifelbein Gable 311

Lot 15

2 conventional Embryos
By Scheifelbein Gable 311



Schiefelbein Gable 311
Sire of Embryos

SITZ RESILIENT 10208
SCHIEFELBEIN GABLE 311
FROSTY ELBA LIZZY 5569
VISION UNANIMOUS 1418
PEAK DOT ERICA 358D
ERICA OF PEAK DOT 896Y

Peak Dot Erica 358D is a female you can build around with confidence. Like many of the Vision Unanimous daughters she is a stout made, deep bodied female with a great udder. Her dam has raised several featured top selling bulls and represents maternal, production, fertility and longevity.
Embryos stored at BoviGen - Moose Jaw SK

BW	WW	YW	MILK	CW	MARB	REA	SC
1.6	74	139	25	57	0.57	0.64	323

PEAK DOT HEROINE 330B

Embryos are qualified for Canada & USA



Lot 16

3 conventional Embryos
By Scheifelbein Gable 311

Lot 17

3 conventional Embryos
By Scheifelbein Gable 311

Lot 18

2 conventional Embryos
By Scheifelbein Gable 311



Schiefelbein Gable 311
Sire of Embryos

SITZ RESILIENT 10208
SCHIEFELBEIN GABLE 311
FROSTY ELBA LIZZY 5569
S A V ELIMINATOR 9105
PEAK DOT HEROINE 330B
HEROINE OF PEAK DOT 1145X

Peak Dot Heroine 330B is an impressive eye appealing, soft made donor with broodiness and body shape, a favorite to all who have visited the Ranch. Her production record is equally as impressive. She has a steller production record and is listed as an Elite/Premier Dam with the CAA. She has raised many featured top sellers including the \$20,000 Peak Dot Ozark 278G selling to Anchorage Farms.

Embryos stored at BoviGen - Moose Jaw SK

BW	WW	YW	MILK	CW	MARB	REA	SC
1.8	72	127	31	51	0.42	0.56	304

PEAK DOT BARDOLIA 10G

Embryos are qualified for Canada & USA



Lot 19

3 conventional Embryos
By Scheifelbein Gable 311

Lot 20

3 conventional Embryos
By Scheifelbein Gable 311

Lot 21

3 conventional Embryos
By Scheifelbein Gable 311



Schiefelbein Gable 311
Sire of Embryos

SITZ RESILIENT 10208
SCHIEFELBEIN GABLE 311
FROSTY ELBA LIZZY 5569
RBM NEXT STEP D143
PEAK DOT BARDOLIA 10G
RBM MISS PRIDE A32

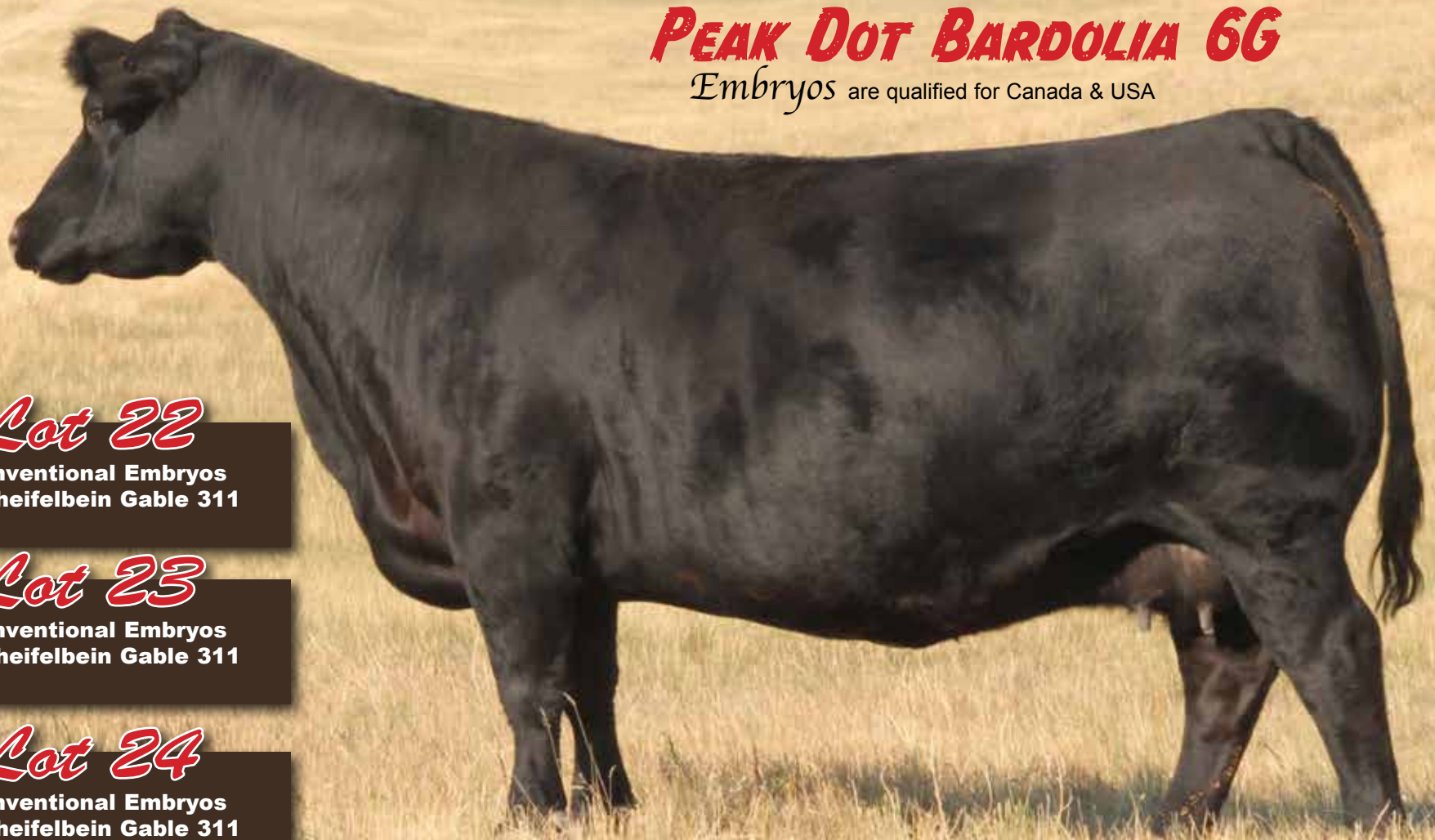
BW	WW	YW	MILK	CW	MARB	REA	SC
1.2	75	134	23	52	0.39	0.69	333

Peak Dot Bardolia 10G is a majestic stunner with style, elegance, neck extension and structural balance in a moderate easy fleshing package. She comes from a great line of females, her dam is a donor along with her grandam. Peak Dot Bardolia 10G has already raised two big time feature sons and has an outstanding SAV American Legend son headed for the 2024 Spring Bull Sale. She is definitely the front pasture kind and her mating to Gable will produce progeny with a fashionable pedigree, curve bending EPD profile and eye catching style.

Embryos stored at BoviGen - Moose Jaw SK

PEAK DOT BARDOLIA 6G

Embryos are qualified for Canada & USA



Lot 22

3 conventional Embryos
By Scheifelbein Gable 311

Lot 23

3 conventional Embryos
By Scheifelbein Gable 311

Lot 24

3 conventional Embryos
By Scheifelbein Gable 311



Schiefelbein Gable 311
Sire of Embryos

SITZ RESILIENT 10208
SCHIEFELBEIN GABLE 311
FROSTY ELBA LIZZY 5569
ELLINGSON ROUGHRIDER 4202
PEAK DOT BARDOLIA 6G
PEAK DOT BARDOLIA 424C

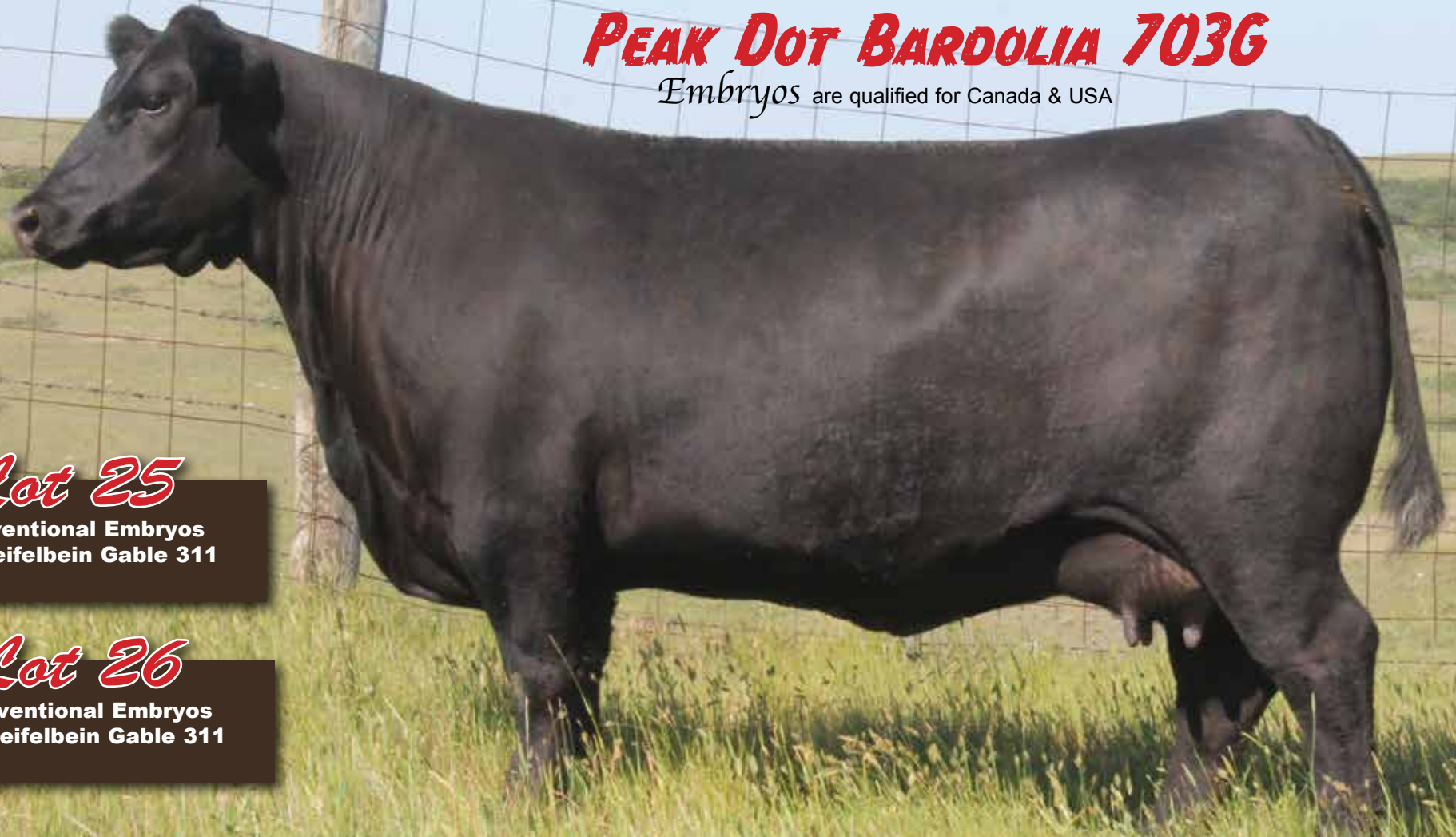
BW	WW	YW	MILK	CW	MARB	REA	SC
0.6	75	136	26	51	0.58	0.74	357

Peak Dot Bardolia 6G is a real breeding piece with a captivating pedigree backed by 3 generations of females with exquisite femininity, abundant milk and powerful phenotype. Her maternal lineage traces back to the popular Bardolia of Peak Dot 963H donor. 963H herself is listed as an Elite/Premier Dam with the CAA and has 41 progeny. We feel this mating with Gable will produce progeny with phenotype and performance that will excel in any program.

Embryos stored at BoviGen - Moose Jaw SK

PEAK DOT BARDOLIA 703G

Embryos are qualified for Canada & USA



Lot 25

3 conventional Embryos
By Scheifelbein Gable 311

Lot 26

3 conventional Embryos
By Scheifelbein Gable 311



Schiefelbein Gable 311
Sire of Embryos

SITZ RESILIENT 10208
SCHIEFELBEIN GABLE 311
 FROSTY ELBA LIZZY 5569
 ELLINGSON ROUHRIDER 4202
PEAK DOT BARDOLIA 703G
 PEAK DOT BARDOLIA 1026Z

BW	WW	YW	MILK	CW	MARB	REA	SC
1.1	76	131	24	56	0.61	0.69	370

Peak Dot Bardolia 703G a second generation donor that is the model of efficiency. She is moderate, deep-bodied, and easy fleshing the kind to build a program around and replicate over and over. We have retained all of her daughters and have several maternal sisters in the herd. A maternal sister Peak Dot Bardolia 19C is also a popular donor and we have retained 6 daughter from her also. This mating to Gable will leave calves with plenty of performance and the maternal components to leave great replacement females.

Embryos stored at BoviGen - Moose Jaw SK

PEAK DOT JESSICA 426G

Embryos are qualified for Canada & USA

Lot 27

3 conventional Embryos
By Scheifelbein Gable 311

Lot 28

3 conventional Embryos
By Scheifelbein Gable 311

Lot 29

3 conventional Embryos
By Scheifelbein Gable 311

Lot 30

3 conventional Embryos
By Scheifelbein Gable 311



Schiefelbein Gable 311
Sire of Embryos

SITZ RESILIENT 10208
SCHIEFELBEIN GABLE 311
FROSTY ELBA LIZZY 5569
JANSSEN EARNHARDT 5003
PEAK DOT JESSICA 426G
PEAK DOT JESSICA 23D

An opportunity to access genetics from one of our favorite cows on the ranch. Peak Dot Jessica 426G is a super powerful cow with a balanced genetic and visual package that excels in udder quality and milk production and maternal quality. She offers a proven pedigree resulting in progeny with bred in consistency and predictability. She has raised the kind that grow and gain and her mating to the popular Gable will result in some high end progeny that will perform and excel in any program.
Embryos stored at BoviGen - Moose Jaw SK

BW	WW	YW	MILK	CW	MARB	REA	SC
0.4	70	118	24	43	0.67	0.60	308

Emerald

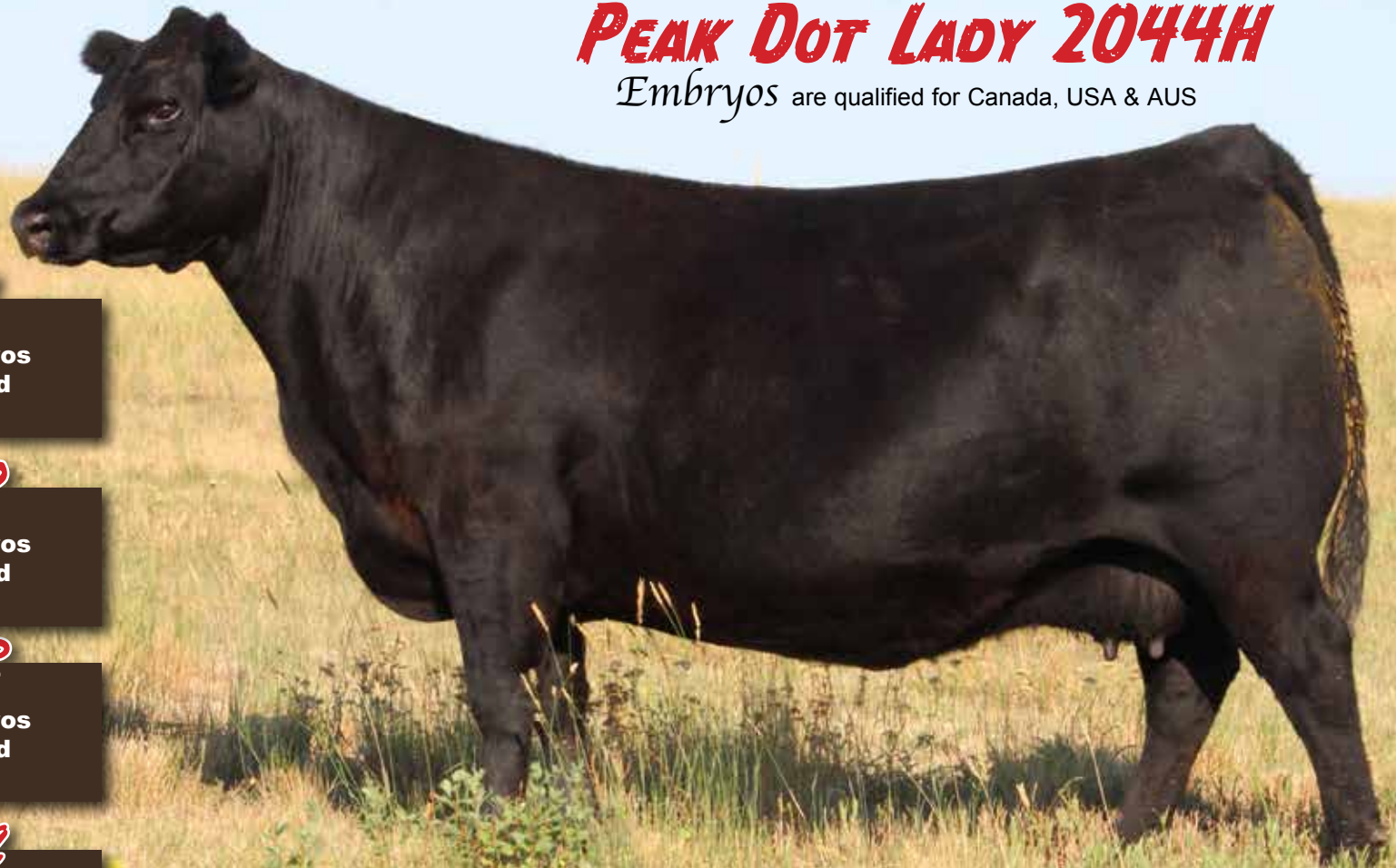
Embryos Lots 31-44



Brooding Emerald 9179

PEAK DOT LADY 2044H

Embryos are qualified for Canada, USA & AUS



Lot 31

3 conventional Embryos
By Brooking Emerald

Lot 32

3 conventional Embryos
By Brooking Emerald

Lot 33

4 conventional Embryos
By Brooking Emerald

Lot 34

4 conventional Embryos
By Brooking Emerald



Brooking Emerald 9179
Sire of Embryos

SAV RENOVATION 6822
BROOKING EMERALD 9179
BROOKING BEAUTY 6051
MUSGRAVE 316 COLOSSAL 137
PEAK DOT LADY 2044H
PEAK DOT LADY 2067D

BW	WW	YW	MILK	CW	MARB	REA	SC
3.5	69	117	22	45	0.37	0.36	277

Peak Dot Lady 2044H has been a favorite ever since she was a calf. She has grown into a long bodied, deep sided cow with a beautiful udder, massive hip and a great look. Her Big River bull calf was a feature in our 2023 Spring Bull Sale and we retained a excellent Brutus daughter out of her this year. The maternal side of this cow is stacked with generations of great females stemming back to Lady of Peak Dot 402U. A popular donor with 64 progeny. This is a great mating here and it will leave some highly productive females.

Embryos stored at Davis Rairdan International, AB

ERICA OF PEAK DOT 736B

Embryos are qualified for Canada, USA & AUS

Lot 35

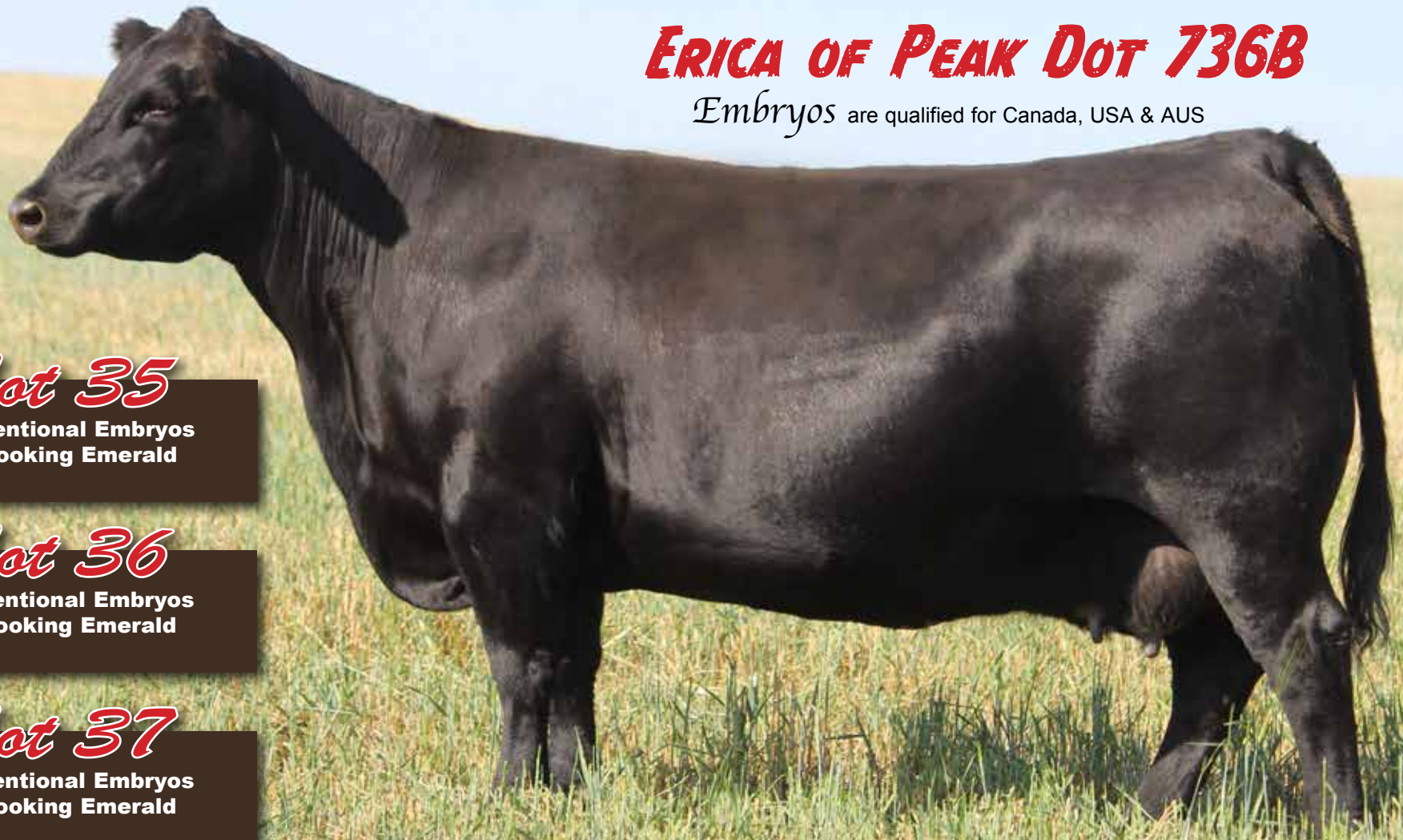
5 conventional Embryos
By Brooking Emerald

Lot 36

3 conventional Embryos
By Brooking Emerald

Lot 37

3 conventional Embryos
By Brooking Emerald



Brooking Emerald 9179
Sire of Embryos

SAV RENOVATION 6822
BROOKING EMERALD 9179
BROOKING BEAUTY 6051
VISION UNANIMOUS 1418
PEAK DOT ERICA 736B
ERICA OF PEAK DOT 478U

BW	WW	YW	MILK	CW	MARB	REA	SC
4.8	70	127	24	57	0.52	0.52	240

Erica of Peak Dot 736B has been an extremely good female for us. She is the dam of the \$110,000 Peak Dot Outcome to Alta Genetics and has also raised several daughters that we have retained in the herd. She has lots of body and dimension and is very good footed. She is a direct daughter from our all time high income producing cow on the ranch Erica of Peak Dot 478U. 478U currently has 54 progeny and is the dam or grandam of several noted sires such as Alta sires Peak Dot Prime and Peak Dot Country and top sellers Peak Dot Attractive 186F and Peak Dot Boost 137H. Erica of Peak Dot 736B throws extra performance into her calves and we are extremely excited about this mating.

Embryos stored at Davis Rairdan International, AB

PEAK DOT HEATHER 248H

Embryos are qualified for Canada, USA & AUS



Lot 38

5 conventional Embryos
By Brooking Emerald

Lot 39

4 conventional Embryos
By Brooking Emerald



Brooking Emerald 9179
Sire of Embryos

SAV RENOVATION 6822
BROOKING EMERALD 9179
BROOKING BEAUTY 6051
PEAK DOT SEEDSTOCK 38F
PEAK DOT HEATHER 248H
PEAK DOT HEATHER 32F

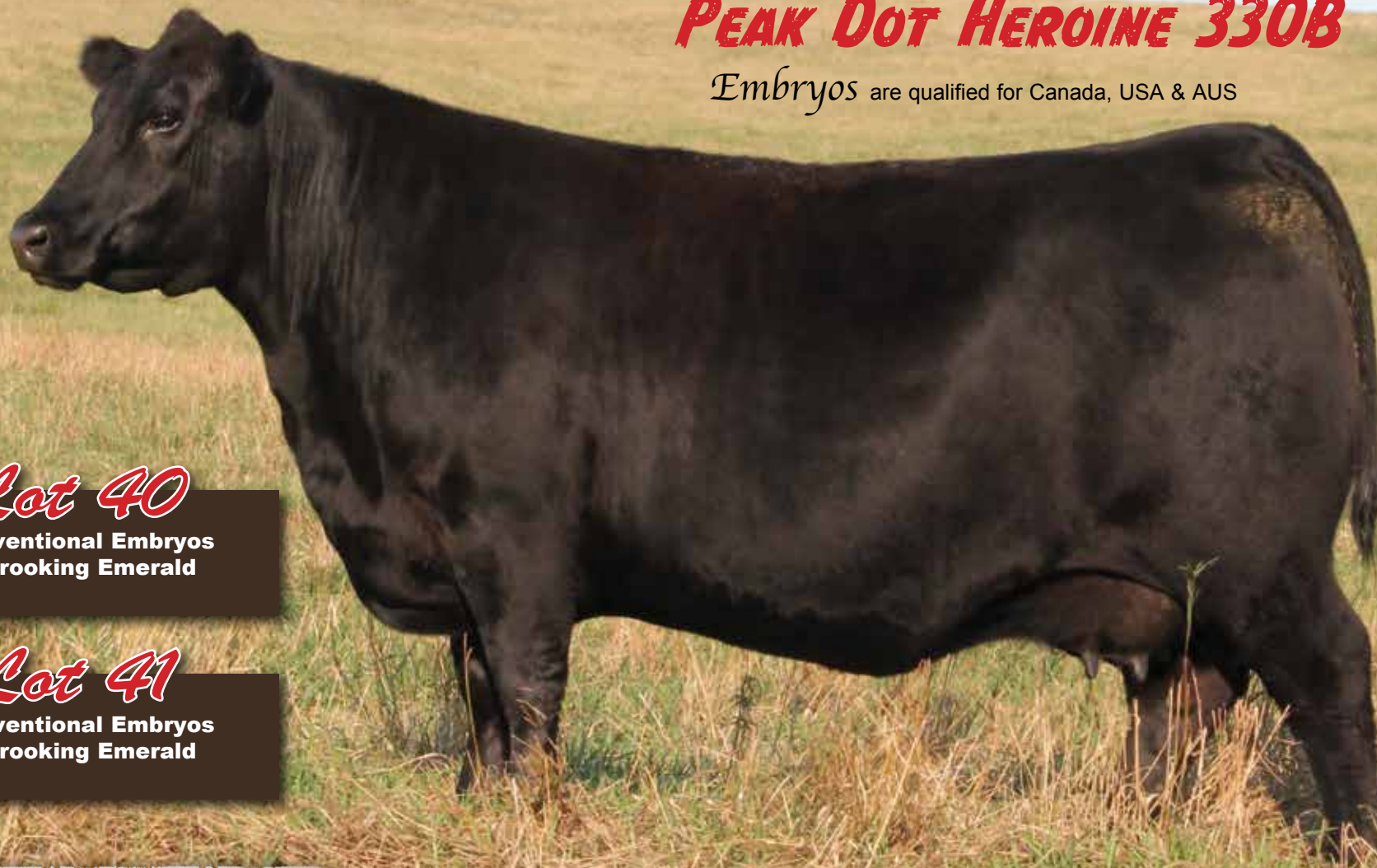
BW	WW	YW	MILK	CW	MARB	REA	SC
3.6	60	112	23	45	0.78	0.45	247

This stunning female is a daughter of Peak Dot Seedstock 38F and is truly a spectacular cow, sweet fronted, feminine, a flawless phenotype and a great udder with excellent teat placement. She has been a female that several visitors to the ranch have identified and picked out as a favorite and one we would certainly like to replicate over and over again. Her No Doubt dam has been making a impact here as well she is a top producing No Doubt daughter with a big massive hip and a great look. She currently has one of the most impressive heifers in the replacement pen sired by Peak Dot Belfast. This is an exciting mating and will leave some phenotypic standouts.

Embryos stored at Davis Rairdan International, AB

PEAK DOT HEROINE 330B

Embryos are qualified for Canada, USA & AUS



Lot 40

3 conventional Embryos
By Brooking Emerald

Lot 41

4 conventional Embryos
By Brooking Emerald



Brooking Emerald 9179
Sire of Embryos

SAV RENOVATION 6822
BROOKING EMERALD 9179
BROOKING BEAUTY 6051
S A V ELIMINATOR 9105
PEAK DOT HEROINE 330B
HEROINE OF PEAK DOT 1145X

Peak Dot Heroine 330B is an impressive eye appealing, soft made donor with broodiness and body shape, a favorite to all who have visited the Ranch. Her production record is equally as impressive. She has a steller production record and is listed as an Elite/Premier Dam with the CAA. She has raised many featured top sellers including the \$20,000 Peak Dot Ozark 278G selling to Anchorage Farms.

Embryos stored at Davis Rairdan International, AB

BW	WW	YW	MILK	CW	MARB	REA	SC
4.6	70	127	29	45	0.39	0.35	229

PEAK DOT LADY 152F

Embryos are qualified for Canada, USA & AUS



Lot 42

3 conventional Embryos
By Brooking Emerald

Lot 43

4 conventional Embryos
By Brooking Emerald

Lot 44

4 conventional Embryos
By Brooking Emerald



Brooking Emerald 9179
Sire of Embryos

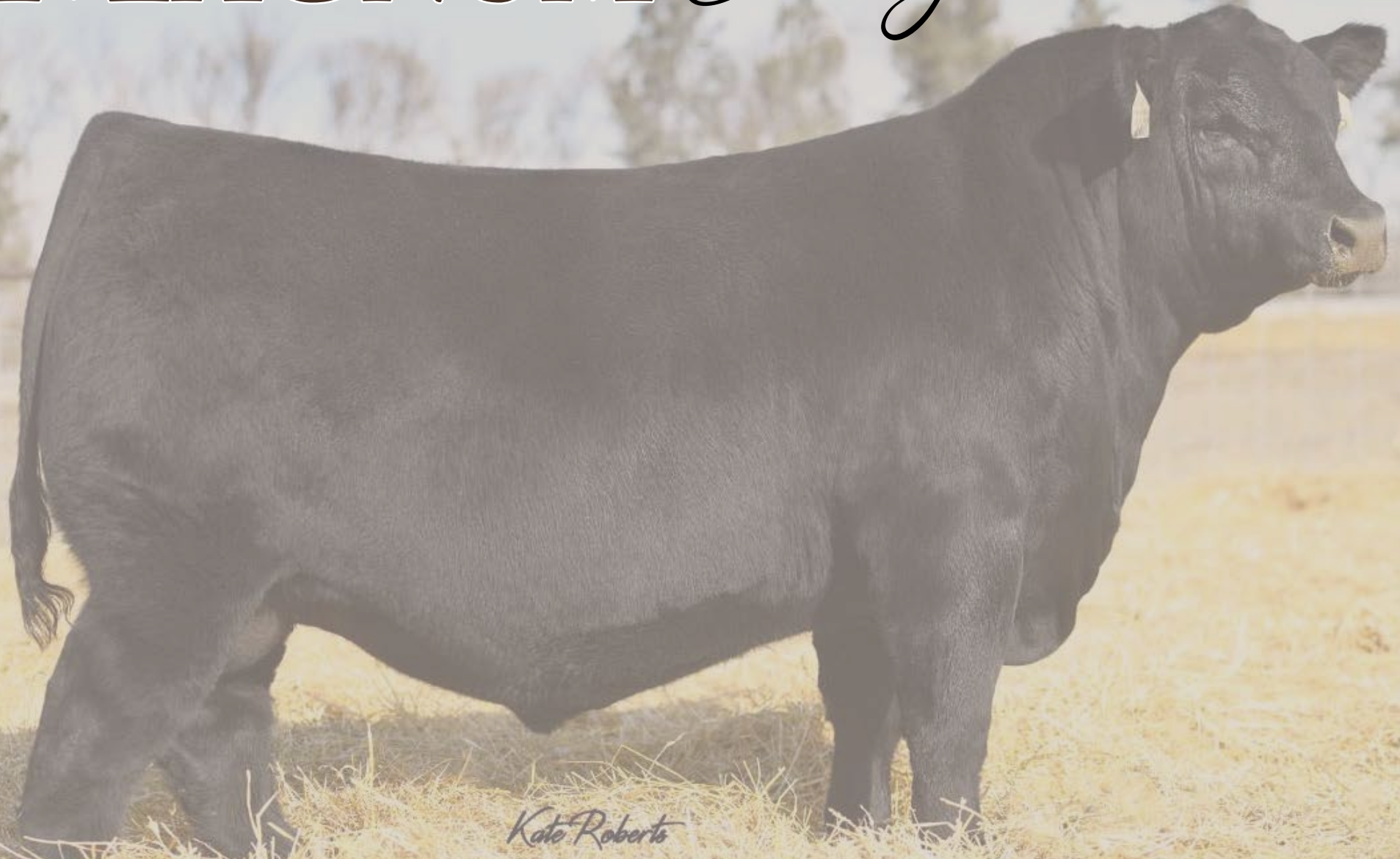
SAV RENOVATION 6822
BROOKING EMERALD 9179
BROOKING BEAUTY 6051
HOOVER NO DOUBT
PEAK DOT LADY 152F
PEAK DOT LADY 10C

Coming from the very popular Lady cow family at Peak Dot, Peak Dot Lady 152F is backed by 3 generations of consecutive Donors representing one of the best maternal lines in the business.

Embryos stored at Davis Rairdan International, AB

BW	WW	YW	MILK	CW	MARB	REA	SC
3.5	62	110	26	51	0.55	0.61	263

MAGNUM *Embryos* Lots 45 - 50

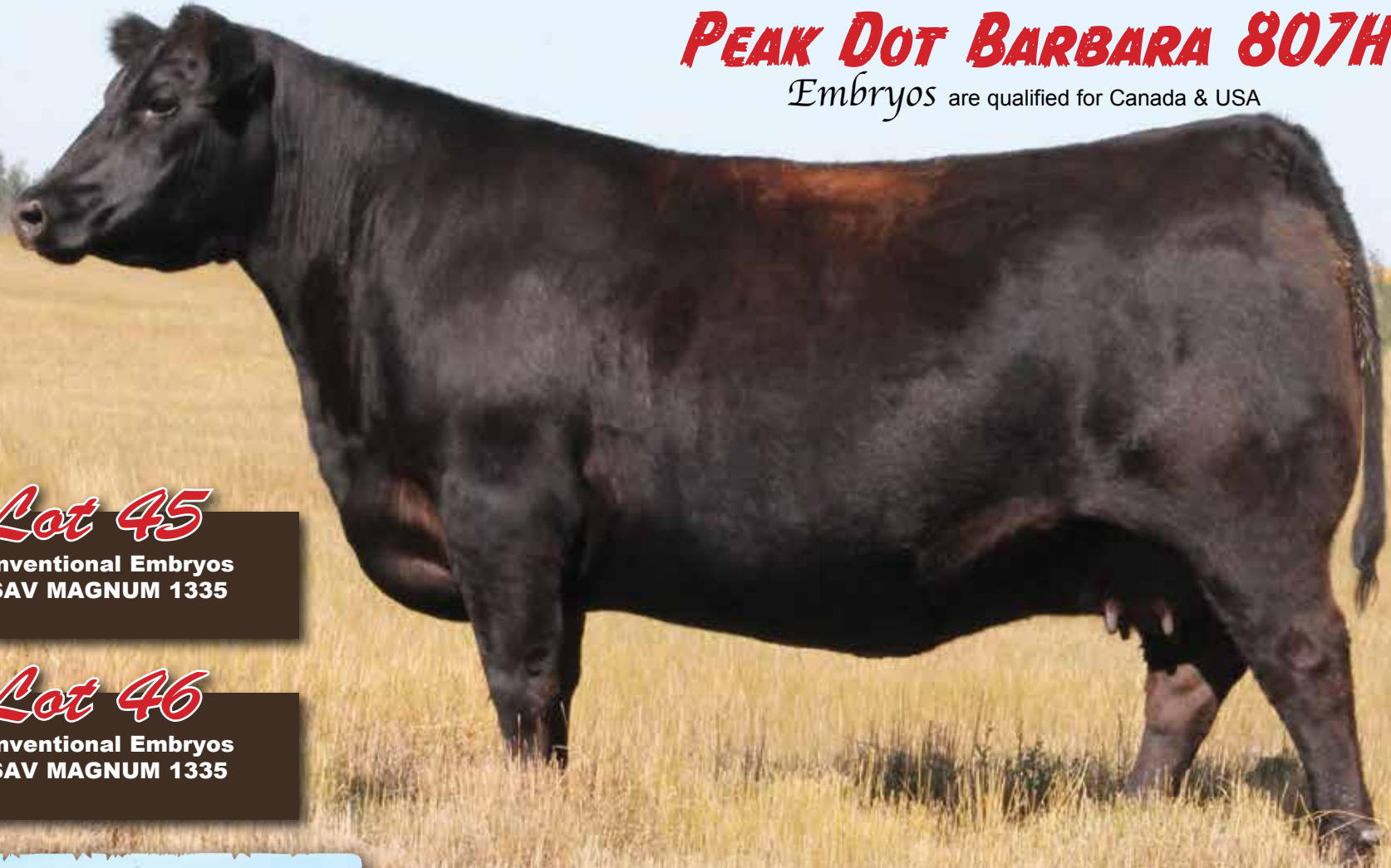


Kate Roberts

SAV Magnum 1335

PEAK DOT BARBARA 807H

Embryos are qualified for Canada & USA



Lot 45

3 conventional Embryos
By SAV MAGNUM 1335

Lot 46

3 conventional Embryos
By SAV MAGNUM 1335



SAV MAGNUM 1335
Sire of Embryos

MEAD MAGNITUDE
SAV MAGNUM 1335
SAV EMBLYNETTE 9023
ELLINGSON PROFOUND 8155
PEAK DOT BARBARA 807H
PEAK DOT BARBARA 483A

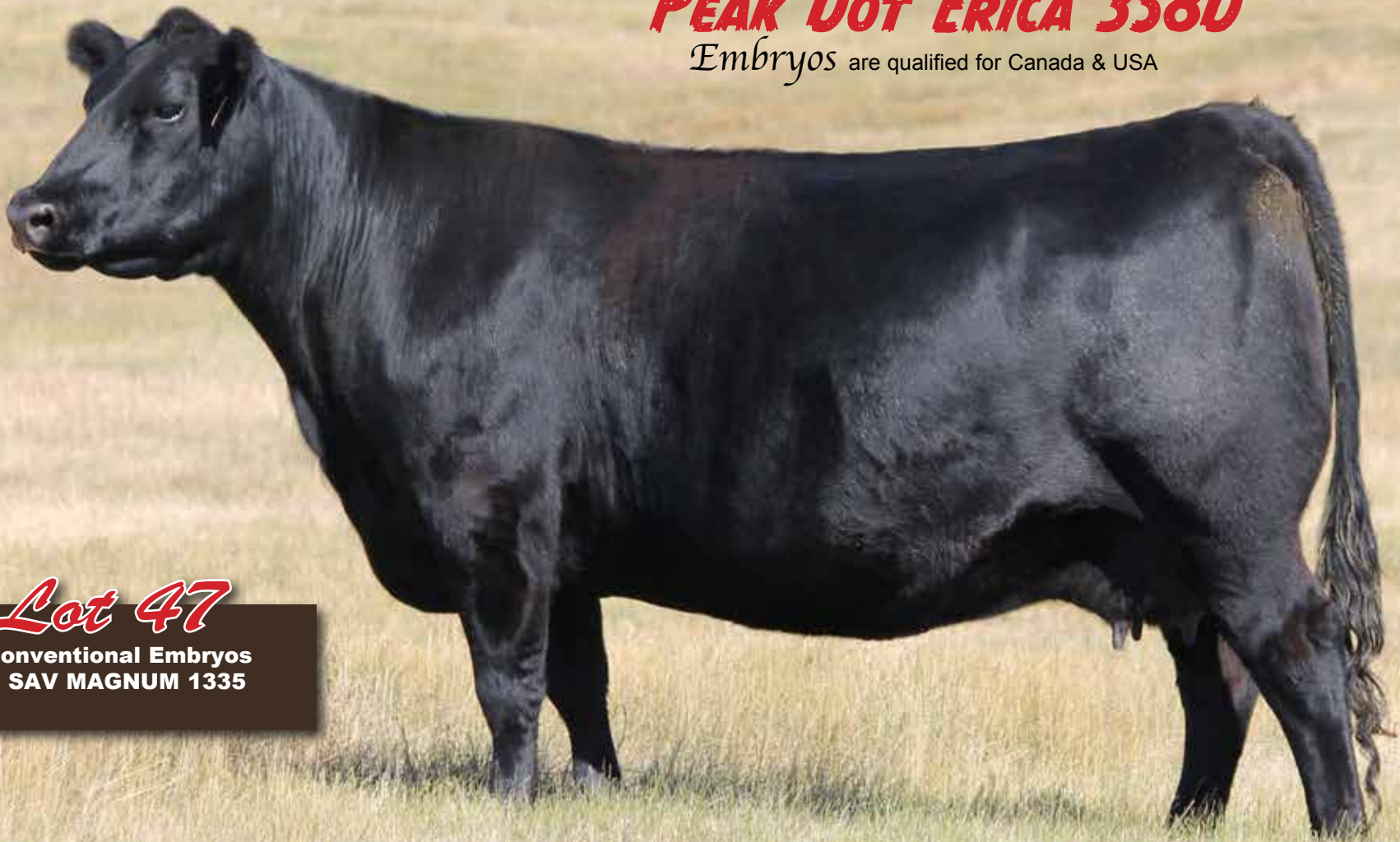
Peak Dot Barbara 807H is a model female from our program. Perfect udder, perfect feet, long level hip, wide based and very sound structured. Her dam Peak Dot Barbara 483A is a proven donor with 35 progeny. We have an extremely nice set of daughters at Peak Dot and her sons have been topping our bull sales. We think the world of this mating to SAV Magnum 1335 and would expect to see sons with an abundance of muscle, body shape and depth of rib and daughters that are easy fleshing, deep ribbed with beautiful udders.

Embryos stored at Davis Rairdan International, AB

BW	WW	YW	MILK	CW	MARB	REA	SC
2.0	85	145	27	60	0.44	0.68	312

PEAK DOT ERICA 358D

Embryos are qualified for Canada & USA



Lot 47

2 conventional Embryos
By SAV MAGNUM 1335



SAV MAGNUM 1335
Sire of Embryos

MEAD MAGNITUDE
SAV MAGNUM 1335
SAV EMBLYNETTE 9023
VISION UNANIMOUS 1418
PEAK DOT ERICA 358D
ERICA OF PEAK DOT 896Y

Peak Dot Erica 358D is a female you can build around with confidence. Like many of the Vision Unanimous daughters she is a stout made, deep bodied female with a great udder. Her dam has raised several featured top selling bulls and represents maternal, production, fertility and longevity.
Embryos stored at Davis Rairdan International, AB

BW	WW	YW	MILK	CW	MARB	REA	SC
2.0	79	143	28	59	0.54	0.67	285

PEAK DOT ANNIE K 246E

Embryos are qualified for Canada & USA

Lot 48

3 conventional Embryos
By SAV MAGNUM 1335

Lot 49

3 conventional Embryos
By SAV MAGNUM 1335



SAV MAGNUM 1335
Sire of Embryos

MEAD MAGNITUDE
SAV MAGNUM 1335
SAV EMBLYNETTE 9023
PEAK DOT PRIME 733B
PEAK DOT ANNIE K 246E
ANNIE K OF PEAK DOT 722W

Peak Dot Annie K 246E is a dominating Peak Dot Prime daughter with capacity, volume and fleshing ability. A real power donor with a nice balance of phenotype and numbers. Her beautiful udder, excellent feet and proven track record combined with her maternal lineage made it a simple decision to introduce this cow to our elite donor pen.

Embryos stored at Davis Rairdan International, AB

BW	WW	YW	MILK	CW	MARB	REA	SC
2.7	76	132	29	56	0.47	0.66	269

PEAK DOT LADY 152F

Embryos are qualified for Canada & USA



Lot 50

3 conventional Embryos
By SAV MAGNUM 1335



SAV MAGNUM 1335
Sire of Embryos

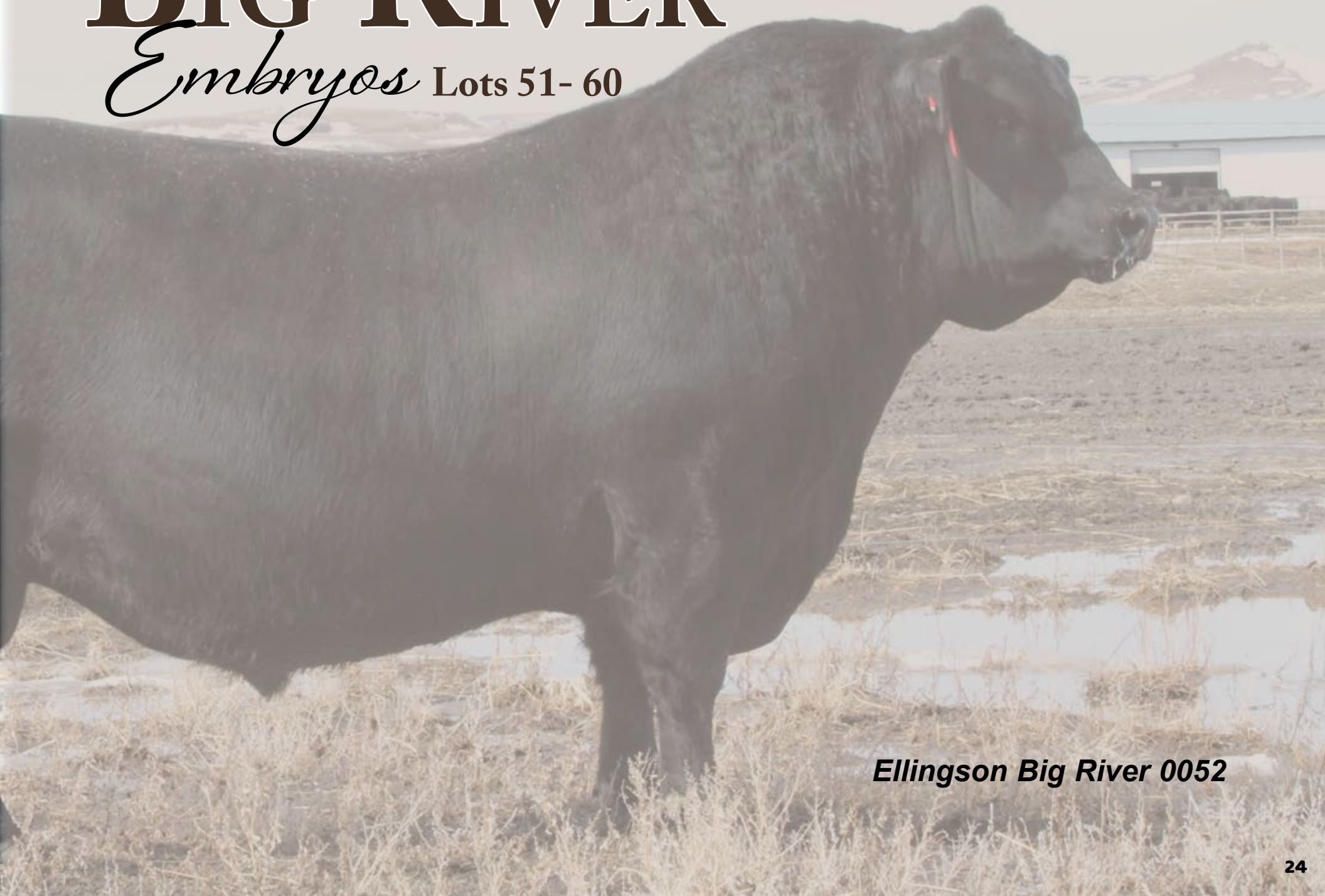
MEAD MAGNITUDE
SAV MAGNUM 1335
SAV EMBLYNETTE 90231
HOOVER NO DOUBT
PEAK DOT LADY 152F
PEAK DOT LADY 10C

Coming from the very popular Lady cow family at Peak Dot, Peak Dot Lady 152F is backed by 3 generations of consecutive Donors representing one of the best maternal lines in the business.
Embryos stored at Davis Rairdan International, AB

BW	WW	YW	MILK	CW	MARB	REA	SC
1.0	74	132	32	59	0.55	0.84	300

BIG RIVER

Embryos Lots 51- 60



Ellingson Big River 0052

PEAK DOT ANNIE K 246E

Embryos are qualified for Canada & USA



Lot 51

3 conventional Embryos
By ELLINGSON BIG RIVER

Lot 52

3 conventional Embryos
By ELLINGSON BIG RIVER



ELLINGSON BIG RIVER 0052
Sire of Embryos

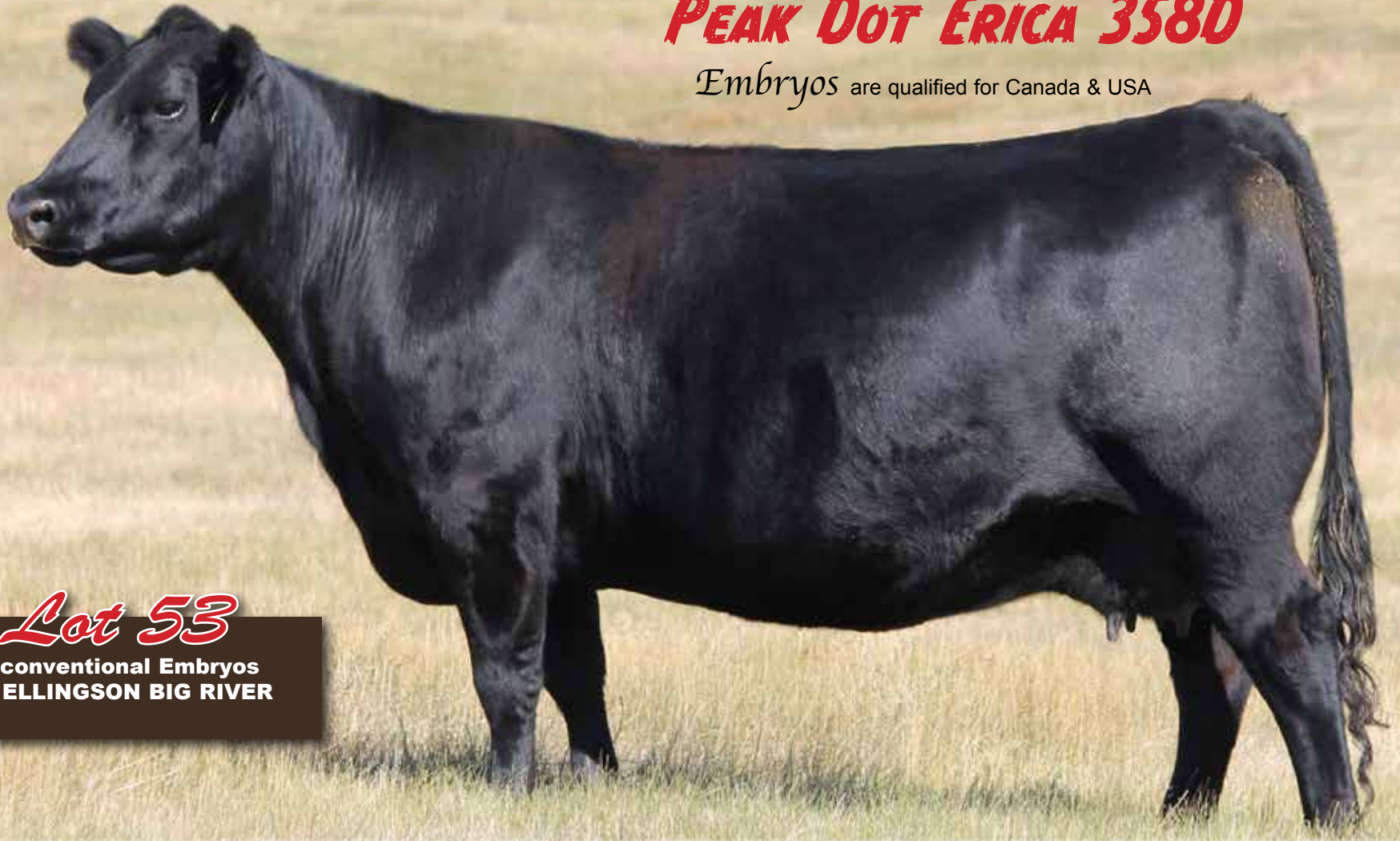
ELLINGSON THREE RIVERS 8062
ELLINGSON BIG RIVER 0052
EA BLACKCAP 4053
PEAK DOT PRIME 733B
PEAK DOT ANNIE K 246E
ANNIE K OF PEAK DOT 722W

Peak Dot Annie K 246E is a dominating Peak Dot Prime daughter with capacity, volume and fleshing ability. A real power donor with a nice balance of phenotype and numbers. Her beautiful udder, excellent feet and proven track record combined with her maternal lineage made it a simple decision to introduce this cow to our elite donor pen.
Embryos stored at BoviGen - Moose Jaw SK

BW	WW	YW	MILK	CW	MARB	REA	SC
4.4	71	120	23	47	0.51	0.49	280

PEAK DOT ERICA 358D

Embryos are qualified for Canada & USA



Lot 53

5 conventional Embryos
By ELLINGSON BIG RIVER



ELLINGSON BIG RIVER 0052
Sire of Embryos

ELLINGSON THREE RIVERS 8062
ELLINGSON BIG RIVER 0052
EA BLACKCAP 4053
VISION UNANIMOUS 1418
PEAK DOT ERICA 358D
ERICA OF PEAK DOT 896Y

Peak Dot Erica 358D is a female you can build around with confidence. Like many of the Vision Unanimous daughters she is a stout made, deep bodied female with a great udder. Her dam has raised several featured top selling bulls and represents maternal, production, fertility and longevity.
Embryos stored at BoviGen - Moose Jaw SK

BW	WW	YW	MILK	CW	MARB	REA	SC
3.7	74	130	22	50	0.57	0.51	296

PEAK DOT HEROINE 330B

Embryos are qualified for Canada & USA

Lot 54

5 conventional Embryos
By ELLINGSON BIG RIVER



ELLINGSON BIG RIVER 0052
Sire of Embryos

ELLINGSON THREE RIVERS 8062
ELLINGSON BIG RIVER 0052
EA BLACKCAP 40531
S A V ELIMINATOR 9105
PEAK DOT HEROINE 330B
HEROINE OF PEAK DOT 1145X

BW	WW	YW	MILK	CW	MARB	REA	SC
3.9	67	117	29	44	0.43	0.42	277

Peak Dot Heroine 330B is an impressive eye appealing, soft made donor with broodiness and body shape, a favorite to all who have visited the Ranch. Her production record is equally as impressive. She has a steller production record and is listed as an Elite/Premier Dam with the CAA. She has raised many featured top sellers including the \$20,000 Peak Dot Ozark 278G selling to Anchorage Farms.

Embryos stored at BoviGen - Moose Jaw SK

PEAK DOT LADY 152F

Embryos are qualified for Canada & USA



Lot 55

3 conventional Embryos
By ELLINGSON BIG RIVER

Lot 56

3 conventional Embryos
By ELLINGSON BIG RIVER



ELLINGSON BIG RIVER 0052
Sire of Embryos

ELLINGSON THREE RIVERS 8062
ELLINGSON BIG RIVER 0052
EA BLACKCAP 40531
HOOVER NO DOUBT
PEAK DOT LADY 152F
PEAK DOT LADY 10C

Coming from the very popular Lady cow family at Peak Dot, Peak Dot Lady 152F is backed by 3 generations of consecutive Donors representing one of the best maternal lines in the business.
Embryos stored at BoviGen - Moose Jaw SK

BW	WW	YW	MILK	CW	MARB	REA	SC
2.8	70	120	26	50	0.59	0.68	311

PEAK DOT HEATHER 248H

Embryos are qualified for Canada & USA



Lot 57

3 conventional Embryos
By ELLINGSON BIG RIVER



ELLINGSON BIG RIVER 0052
Sire of Embryos

ELLINGSON THREE RIVERS 8062
ELLINGSON BIG RIVER 0052
EA BLACKCAP 40531
PEAK DOT SEEDSTOCK 38F
PEAK DOT HEATHER 248H
PEAK DOT HEATHER 32F

BW	WW	YW	MILK	CW	MARB	REA	SC
2.9	68	122	23	54	0.82	0.52	295

This stunning female is a daughter of Peak Dot Seedstock 38F and is truly a spectacular cow, sweet fronted, feminine, a flawless phenotype and a great udder with excellent teat placement. She has been a female that several visitors to the ranch have identified and picked out as a favorite and one we would certainly like to replicate over and over again. Her No Doubt dam has been making a impact here as well she is a top producing No Doubt daughter with a big massive hip and a great look. She currently has one of the most impressive heifers in the replacement pen sired by Peak Dot Belfast. This is an exciting mating and will leave some phenotypic standouts.

Embryos stored at BoviGen - Moose Jaw SK

PEAK DOT ERICA 40E

Embryos are qualified for Canada & USA



Lot 58

3 conventional Embryos
By ELLINGSON BIG RIVER

Lot 59

4 conventional Embryos
By ELLINGSON BIG RIVER



ELLINGSON BIG RIVER 0052
Sire of Embryos

ELLINGSON THREE RIVERS 8062
ELLINGSON BIG RIVER 0052
EA BLACKCAP 40531
VISION UNANIMOUS 1418
PEAK DOT ERICA 40E
ERICA OF PEAK DOT 478U

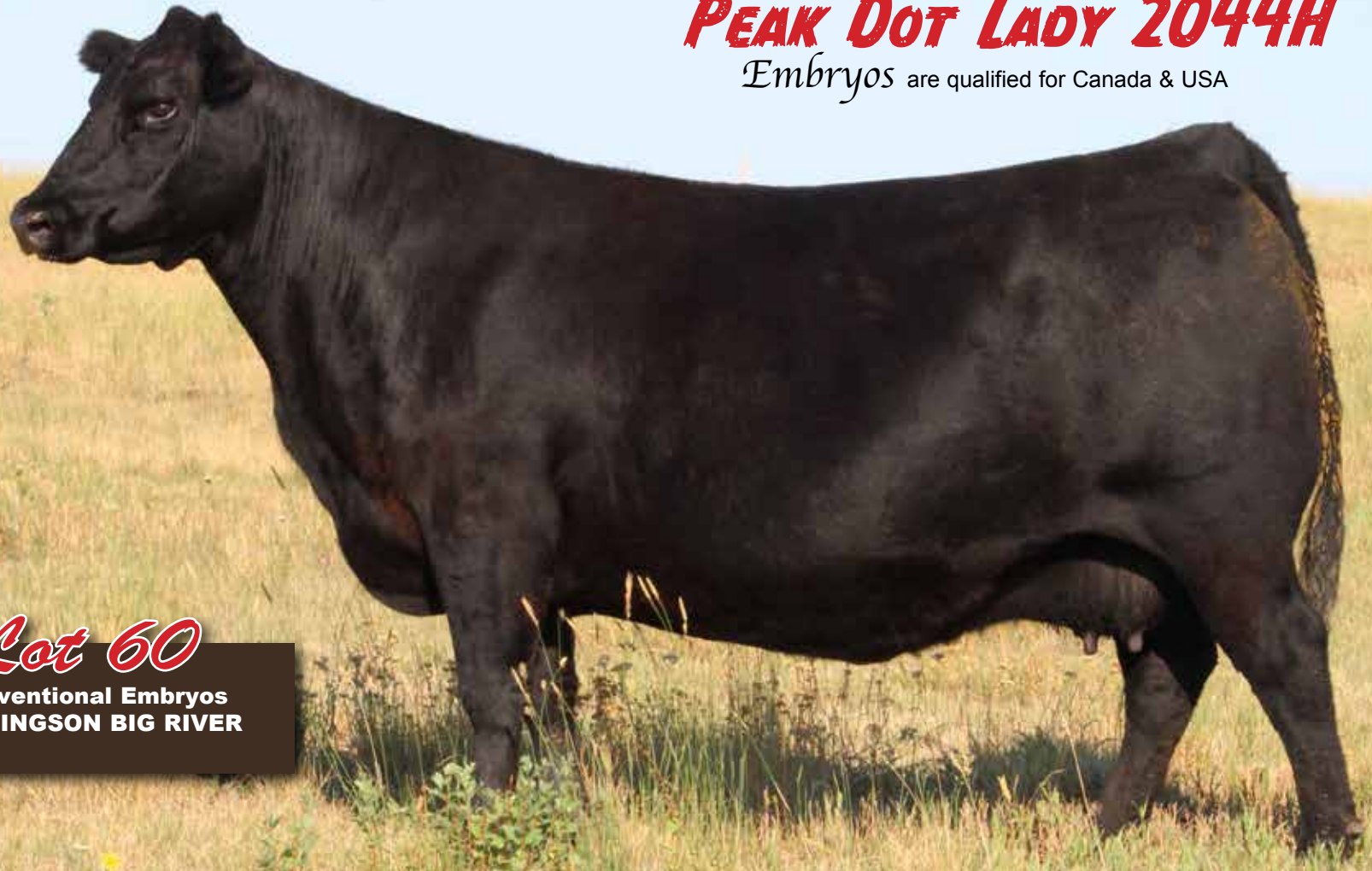
BW	WW	YW	MILK	CW	MARB	REA	SC
4.0	75	130	19	48	0.56	0.45	271

Peak Dot Erica 40E is a second generation donor and direct daughter from our all time high income producing cow on the ranch Erica of Peak Dot 478U. She currently has 54 progeny and is the dam or grandam of several noted sires such as Alta sires Peak Dot Prime and Peak Dot Country and top sellers Peak Dot Attractive 186F and Peak Dot Boost 137H. Peak Dot Erica 40E was chosen to continue on the Erica Legacy. She is a proven producer with great feet, an exceptional udder and that soft easy fleshing body type that we like to replicate over and over. Her mating to the popular Big River should result in progeny that are easy to look at and even easier to sell!

Embryos stored at BoviGen - Moose Jaw SK

PEAK DOT LADY 2044H

Embryos are qualified for Canada & USA



Lot 60

5 conventional Embryos
By ELLINGSON BIG RIVER



ELLINGSON BIG RIVER 0052
Sire of Embryos

ELLINGSON THREE RIVERS 8062
ELLINGSON BIG RIVER 0052
EA BLACKCAP 40531
MUSGRAVE 316 COLOSSAL 137
PEAK DOT LADY 2044H
PEAK DOT LADY 2067D

BW	WW	YW	MILK	CW	MARB	REA	SC
2.7	77	126	21	44	0.40	0.42	325

Peak Dot Lady 2044H has been a favorite ever since she was a calf. She has grown into a long bodied, deep sided cow with a beautiful udder, massive hip and a great look. Her Big River bull calf was a feature in our 2023 Spring Bull Sale and we retained a excellent Brutus daughter out of her this year. The maternal side of this cow is stacked with generations of great females stemming back to Lady of Peak Dot 402U. A popular donor with 64 progeny. This is a great mating here and it will leave some highly productive females.

Embryos stored at BoviGen - Moose Jaw SK

Revival

Embryos

Lots 61- 68

H02

Woodhill Revival H028

Katie Sanger
top stock

Lot 61

3 conventional Embryos
By WOODHILL REVIVAL

Lot 62

3 conventional Embryos
By WOODHILL REVIVAL

Lot 63

3 conventional Embryos
By WOODHILL REVIVAL

Lot 64

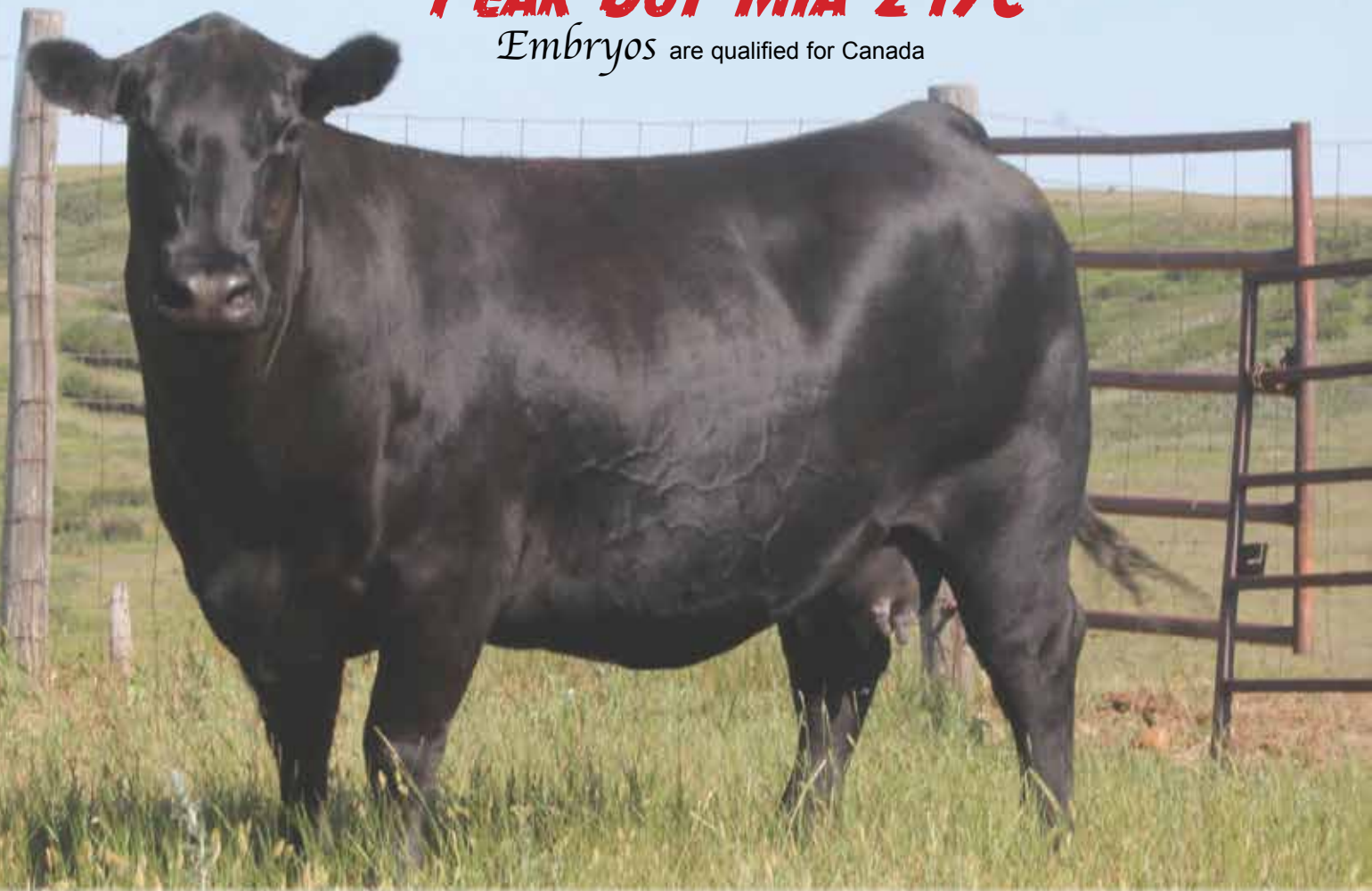
3 conventional Embryos
By WOODHILL REVIVAL

Lot 65

3 conventional Embryos
By WOODHILL REVIVAL

PEAK DOT MIA 247C

Embryos are qualified for Canada



WOODHILL REVIVAL
Sire of Embryos

WOODHILL RELEVANCE
WOODHILL REVIVAL H028
WOODHILL EVERGREEN
VISION UNANIMOUS 1418
PEAK DOT MIA 247C
MIA OF PEAK DOT 316Y

BW	WW	YW	MILK	CW	MARB	REA	SC
1.6	68	121	25	54	0.72	0.47	305

Peak Dot Mia 247C is the ideal donor, she is extremely fertile and can flat out raise big time progeny. The Unanimous cattle are functional and easy fleshing and Peak Dot Mia 247C is among the very best donors at Peak Dot. She raised a personal favorite to sell in 2021, the \$35,000 Peak Dot Newfound 83H and has had several sale toppers sell this fall for multiple breeders and there will be many more sell this spring including several full brothers to these embryos selling at Peak Dot. Peak Dot Mia 247C progeny are consistently stout, hairy, big hipped and strong footed.

Embryos stored at Bow Valley Genetics, AB

PEAK DOT LADY LAWN 551B

Embryos are qualified for Canada

Lot 66

3 conventional Embryos
By WOODHILL REVIVAL

Lot 67

3 conventional Embryos
By WOODHILL REVIVAL

Lot 68

4 conventional Embryos
By WOODHILL REVIVAL



WOODHILL REVIVAL
Sire of Embryos

WOODHILL RELEVANCE
WOODHILL REVIVAL H028
WOODHILL EVERGREEN
SAV ELIMINATOR 9105
PEAK DOT LADY LAWN 551B
LADY LAWN OF PEAK DOT 898X

BW	WW	YW	MILK	CW	MARB	REA	SC
1.5	57	107	31	49	0.56	0.51	269

The Lady Lawn cow family has been featured at Peak Dot for years, back to the Remington Lady Lawn 144R donor that Peak Dot acquired to go on and start a new line of females. 551B is a daughter of Peak Dot herdsire SAV Eliminator 9105 that has left some of the best udders in the Angus breed with his progeny. With Eliminator on the top side and out-cross Canadian genetics on the bottom, there is unlimited mating flexibility with this proven donor and her progeny. When you think about what an ideal Angus female should look like this second generation donor comes to mind. She is one of the easiest cows to mate because she works on about any bull. Her combination of softness, depth, udder quality and productivity is impressive. 551B raised the top selling flush of Roughrider brothers in the 2020 spring Peak Dot sale and in the spring of 2021 she did it again raising the lead off \$24,000 Roughrider son and one the top Colossal sons. All of her daughters have been retained by Peak Dot and are some of the most cherished females on the ranch.

Embryos stored at Bow Valley Genetics, AB

Brutus *Embryos* Lot 69

390

Brookdale Brutus 390

PEAK DOT LADY LAWN 551B

Embryos are qualified for Canada



Lot 69

3 conventional Embryos
By **BROOKDALE BRUTUS 390**



BROOKDALE BRUTUS 390
Sire of Embryos

BALDRIDGE BRONC
BROOKDALE BRUTUS 390
BALDRIDGE ISABEL Y69
SAV ELIMINATOR 9105
PEAK DOT LADY LAWN 551B
LADY LAWN OF PEAK DOT 898X

BW	WW	YW	MILK	CW	MARB	REA	SC
2.7	70	120	31	43	0.38	0.53	253

The Lady Lawn cow family has been featured at Peak Dot for years, back to the Remington Lady Lawn 144R donor that Peak Dot acquired to go on and start a new line of females. 551B is a daughter of Peak Dot herdsire SAV Eliminator 9105 that has left some of the best udders in the Angus breed with his progeny. With Eliminator on the top side and out-cross Canadian genetics on the bottom, there is unlimited mating flexibility with this proven donor and her progeny. When you think about what an ideal Angus female should look like this second generation donor comes to mind. She is one of the easiest cows to mate because she works on about any bull. Her combination of softness, depth, udder quality and productivity is impressive. 551B raised the top selling flush of Roughrider brothers in the 2020 spring Peak Dot sale and in the spring of 2021 she did it again raising the lead off \$24,000 Roughrider son and one the top Colossal sons. All of her daughters have been retained by Peak Dot and are some of the most cherished females on the ranch.

Embryos stored at Bow Valley Genetics, AB

Belfast

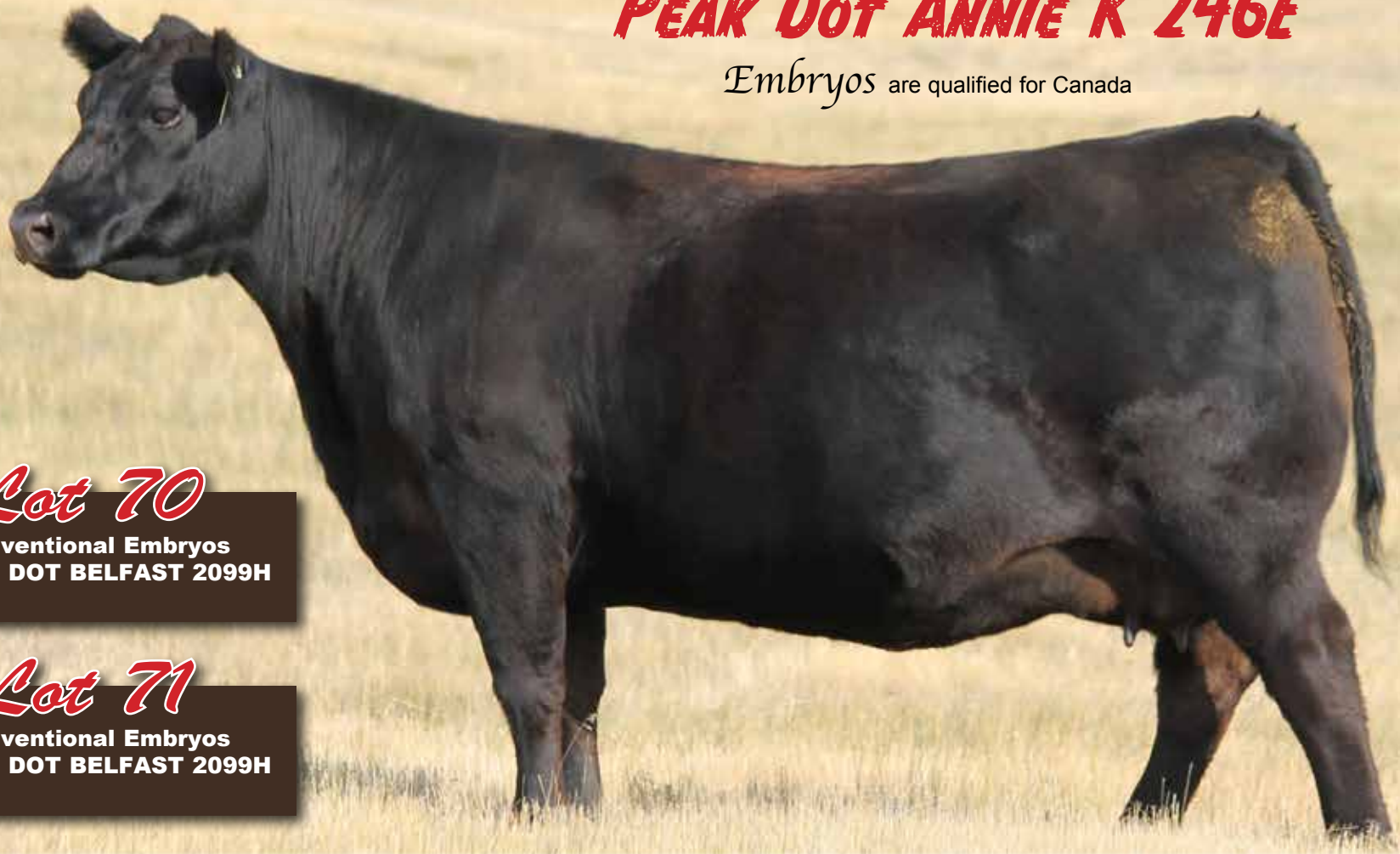
Embryos Lots 70 - 73



Peak Dot Belfast 2099H

PEAK DOT ANNIE K 246E

Embryos are qualified for Canada



Lot 70

3 conventional Embryos
By PEAK DOT BELFAST 2099H

Lot 71

3 conventional Embryos
By PEAK DOT BELFAST 2099H



PEAK DOT BELFAST 2099H
Sire of Embryos

MUSGRAVE 316 COLOSSAL 137
PEAK DOT BELFAST 2099H
PEAK DOT ANNIE K 2145E
PEAK DOT PRIME 733B
PEAK DOT ANNIE K 246E
ANNIE K OF PEAK DOT 722W

Peak Dot Annie K 246E is a dominating Peak Dot Prime daughter with capacity, volume and fleshing ability. A real power donor with a nice balance of phenotype and numbers. Her beautiful udder, excellent feet and proven track record combined with her maternal lineage made it a simple decision to introduce this cow to our elite donor pen.

Embryos stored at BoviGen - Moose Jaw SK

BW	WW	YW	MILK	CW	MARB	REA	SC
3.2	69	116	18	48	0.42	0.42	259

PEAK DOT HEROINE 330B

Embryos are qualified for Canada



Lot 72

4 conventional Embryos
By PEAK DOT BELFAST 2099H



PEAK DOT BELFAST 2099H
Sire of Embryos

MUSGRAVE 316 COLOSSAL 137
PEAK DOT BELFAST 2099H
PEAK DOT ANNIE K 2145E
S A V ELIMINATOR 9105
PEAK DOT HEROINE 330B
HEROINE OF PEAK DOT 1145X

BW	WW	YW	MILK	CW	MARB	REA	SC
2.6	65	114	22	44	0.34	0.35	255

Peak Dot Heroine 330B is an impressive eye appealing, soft made donor with broodiness and body shape, a favorite to all who have visited the Ranch. Her production record is equally as impressive. She has a steller production record and is listed as an Elite/Premier Dam with the CAA. She has raised many featured top sellers including the \$20,000 Peak Dot Ozark 278G selling to Anchorage Farms.

Embryos stored at BoviGen - Moose Jaw SK

PEAK DOT LADY 152F

Embryos are qualified for Canada



Lot 73

1 conventional Embryo
By PEAK DOT BELFAST 2099H



PEAK DOT BELFAST 2099H
Sire of Embryos

MUSGRAVE 316 COLOSSAL 137
PEAK DOT BELFAST 2099H
PEAK DOT ANNIE K 2145E
HOOVER NO DOUBT
PEAK DOT LADY 152F
PEAK DOT LADY 10C

Coming from the very popular Lady cow family at Peak Dot, Peak Dot Lady 152F is backed by 3 generations of consecutive Donors representing one of the best maternal lines in the business.

Embryos stored at BoviGen - Moose Jaw SK

BW	WW	YW	MILK	CW	MARB	REA	SC
1.5	68	116	20	51	0.50	0.61	291

Peak Dot **Boost 162K**

Semen qualified for Canada & USA & Mexico



Lot 74

10 Straws Semen
Peak Dot Boost 162K

Lot 75

10 Straws Semen
Peak Dot Boost 162K

Lot 76

10 Straws Semen
Peak Dot Boost 162K

Lot 77

10 Straws Semen
Peak Dot Boost 162K

Lot 78

10 Straws Semen
Peak Dot Boost 162K

MUSGRAVE 316 COLOSSAL 137
PEAK DOT BOOST 137H
PEAK DOT ERICA 738B
HOOVER NO DOUBT
PEAK DOT DUCHESS 27H
DUCHESS OF PEAK DOT 155Y

BW	WW	YW	MILK	CW	MARB	REA	SC
3.8	80	143	21	64	0.65	0.91	316

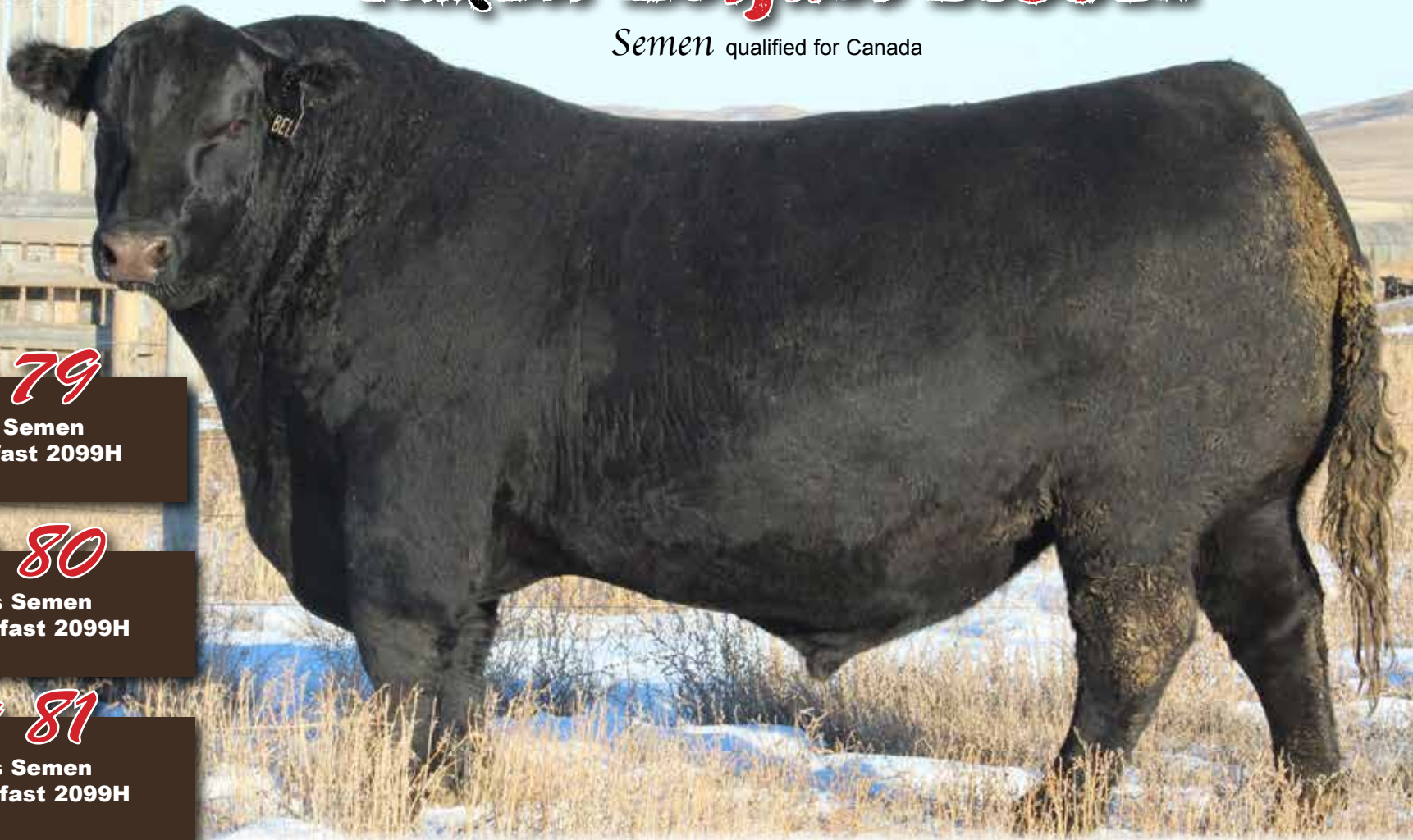
Semen stored at Alta Genetics, AB

Peak Dot Boost 162K was the \$80,000 top selling bull from our 2023 Spring Sale to Eaglehawk Angus Australia. Boost 162K is a low birth weight bull that will also add some real pounds to your calf crop and dollars to your bottom line. You will love the look of this bull. He displays real muscle, capacity, softness and substance with powerful phenotype. He weaned off at 911lbs to earn a weaning ratio of 114. He is off a great looking No Doubt daughter with a nice udder and his grandam earned Elite Dam status with the Canadian Angus Association. Peak Dot Boost 162K comes with a ton of performance packed into a moderate frame.

- Top 1% Weaning weight
- Top 1% Yearling weight
- Top 2% Rib Eye Area
- Top 4% Carcase Weight
- Top 15% Marbling
- Top 8% Docility

Peak Dot **Belfast 2099H**

Semen qualified for Canada



Lot 79

10 Straws Semen
Peak Dot Belfast 2099H

Lot 80

10 Straws Semen
Peak Dot Belfast 2099H

Lot 81

10 Straws Semen
Peak Dot Belfast 2099H

Lot 82

10 Straws Semen
Peak Dot Belfast 2099H

Lot 83

10 Straws Semen
Peak Dot Belfast 2099H

LD CAPITALIST 028
MUSGRAVE 316 COLOSSAL 137
 MUSGRAVE LADY BARBARA 545
 4M ELEMENT 405
PEAK DOT ANNIE K 2145E
 ANNIE K OF PEAK DOT 1016X

BW	WW	YW	MILK	CW	MARB	REA	SC
1.5	82	137	11	56	0.46	0.46	293

Semen stored at BoviGen - Moose Jaw SK

This power bull has peaked several peoples interest that seen him and his calves. His name is Peak Dot Belfast 2099H. He is a Colossal son that offers calving-ease with more frame and performance. His easy fleshing, fertile Element dam has an excellent udder and very good feet. His sons will be leading off the 2024 Spring Sale Book and certainly are a feature sire group and his daughters are among some of our favorites in the replacement pen.

BW:.....+1.5
 WW:.....+82 (Top 1%)
 YW:+137 (Top 1%)
 Heifer Pregnancy.....+16 (Top 1%)
 Mat Calving-ease+16 (Top 1%)
 Carcass WT.....+56 (Top 10%)

Ellingson **Big River**

Semen qualified for Canada

Lot 84

10 Straws Semen
Ellingson Big River

Lot 85

10 Straws Semen
Ellingson Big River

Lot 86

10 Straws Semen
Ellingson Big River

Lot 87

10 Straws Semen
Ellingson Big River

Lot 88

10 Straws Semen
Ellingson Big River

ELLINGSON HOMESTEAD 6030
ELLINGSON THREE RIVERS 8062
EA EMBLYNETTE 6279
KOU PAL ADVANCE 28
EA BLACKCAP 4053
EA BLACKCAP 7915

BW	WW	YW	MILK	CW	MARB	REA	SC
4.0	86	146	25	54	0.65	0.61	343

Semen stored at Bow Valley Genetics, AB

Big River progeny are well made with lots of size, body shape, hair and bone and as much sheer thickness as any sire we have ever used. His daughters are among the very best in the replacement pen and his sons were among the top selling bulls in our last two sales. Ellingson Big River is the next big important piece in our breeding program here at Peak Dot as we continue to improve overall maternal, foot and udder quality, fertility and milking ability. His muscle density, base width and bone circumference and performance is unmatched. He checks all the boxes starting with **Big PERFORMANCE**: A moderate 86lbs birth weight combined with a 1006lbs weaning weight and a 1674lbs yearling weight. **Big MATERNAL**: His dam EA Blackcap 4053 is one of the best donor females on the Ellingson Angus Ranch and has earned Pathfinder status with a production record birth ratio of 5/97, a nursing ratio of 5/107 and a yearling ratio of 3/102. **Big FERTILITY**: 42cm scrotal at a year and has put up a large volume of quality semen. **Big POWER**: Explosive body capacity, ample bone, structural soundness and fluent mobility. Top 1% for hoof claw and angle EPDs. Top 1% for weaning and Yearling EPDs.

Peak Dot *Mosaic*

Semen qualified for Canada

Lot 89

10 Straws Semen
Peak Dot Mosaic

Lot 90

10 Straws Semen
Peak Dot Mosaic

Lot 91

10 Straws Semen
Peak Dot Mosaic

Lot 92

10 Straws Semen
Peak Dot Mosaic

Lot 93

10 Straws Semen
Peak Dot Mosaic

CONNEALY EARNAN 076E
ELLINGSON ROUGHRIDER 4202
EA BLACKLASS 8914
BUSH EASY DECISION 98
PEAK DOT LADY 38C
PEAK DOT LADY 626A

BW	WW	YW	MILK	CW	MARB	REA	SC
3.3	64	118	20	56	0.42	0.73	325

Semen stored at Bow Valley Genetics, AB

Peak Dot Mosaic was the \$60,000 sale feature from the 2020 Peak Dot Ranch Spring bull sale selling to SSS Cattle Co. He offers extra natural width and depth of body in a structurally sound package. He is backed by some of the best cows on the ranch with two consecutive generations of donors. Mosaic sons posted impressive weaning weights with tremendous depth of body, width and ideal growth curves for real-world cattle producers. His first sons were the top selling lots in the 2022 Spring Peak Dot Ranch Bull Sale!

Peak Dot **Boost 137H**

Semen qualified for Canada



Lot 94

10 Straws Semen
Peak Dot Boost 137H

Lot 95

10 Straws Semen
Peak Dot Boost 137H

Lot 96

10 Straws Semen
Peak Dot Boost 137H

Lot 97

10 Straws Semen
Peak Dot Boost 137H

Lot 98

10 Straws Semen
Peak Dot Boost 137H

LD CAPITALIST 028
MUSGRAVE 316 COLOSSAL 137
MUSGRAVE LADY BARBARA 545
VISION UNANIMOUS 1418
PEAK DOT ERICA 738B
ERICA OF PEAK DOT 478U

BW	WW	YW	MILK	CW	MARB	REA	SC
0.9	71	130	25	55	0.58	0.66	320

Semen stored at Bow Valley Genetics, AB

Calving Ease with Performance

Incredible mass, volume, length and stoutness with abundant depth, thickness and excellent scrotal development. This bull is something special. He has a birth weight of 68lbs then went on to wean off at 934lbs and weighed just under 1700lbs at a year of age! He earned a weaning ratio of 124 and ranks in the very top 1% for weaning weight and yearling weight EPDs, top 10% for REA and top 3% for CED. His grandam Erica of Peak Dot 478U is the most influential cow at Peak Dot with 54 progeny. Boost was purchased by Semex Beef. Unfortunately Boost had an untimely death before all his health test were completed for exportable semen leaving a limited amount of semen and it is Canadian qualified only.

SAV 004 Predominant 4438

Semen qualified for Canada and USA



Lot 99

10 Straws Semen
SAV 004 Predominant 4438

Lot 100

10 Straws Semen
SAV 004 Predominant 4438

Lot 101

10 Straws Semen
SAV 004 Predominant 4438

Lot 102

10 Straws Semen
SAV 004 Predominant 4438

Lot 103

10 Straws Semen
SAV 004 Predominant 4438

SITZ TRAVELER 8180
SAV 8180 TRAVELER 004
BOYD FOREVER LADY 8003
SAF 598 BANDO 5175
SAV EMBLYNETTE 1182
SAV EMBLYNETTE 7319

SAV 004 PREDOMINANT 4438

Predominant was one of the most influential herdsire s ever purchased by Peak Dot Ranch. For years his sons topped sale after sale at Peak Dot and across the country. Commercial ranchers loved the Predominant sons for there excellent feet, added thickness and volume. We still have customers tell us some of the best bulls and females they ever owned were Predominant sons and daughters. Predominant daughters are beautiful broody females with extra body depth, capacity and excellent udders. Do not miss this chance to purchase this limited semen on one of the best proven herdsire to ever come out of the SAV program.

BW	WW	YW	MILK	CW	MARB	REA	SC
2.0	54	89	25	19	0.34	0.19	256

Semen stored at Alta Genetics, AB

Peak Dot **Newfound 83H**

Semen qualified for Canada

Lot 104

10 Straws Semen
Peak Dot Newfound 83H

Lot 105

10 Straws Semen
Peak Dot Newfound 83H

Lot 106

10 Straws Semen
Peak Dot Newfound 83H

Lot 107

10 Straws Semen
Peak Dot Newfound 83H

Lot 108

10 Straws Semen
Peak Dot Newfound 83H

S POWERPOINT WS 5503
ELLINGSON PROFOUND 8155
EA ROSETTA 6157
VISION UNANIMOUS 1418
PEAK DOT MIA 247C
MIA OF PEAK DOT 316Y

BW	WW	YW	MILK	CW	MARB	REA	SC
3.4	78	126	14	49	0.56	0.53	329

Semen stored at BoviGen - Moose Jaw SK

The popular lot 1 \$35,000 top selling bull Profound son in the 2021 Peak Dot Ranch Bull Sale. Newfound may be the most balanced individual ever raised at Peak Dot Ranch. He replicates the same unmistakable herdbull presence that his sire does. His eye catching phenotype and excellent feet have been appreciated by even the most astute cattle visitors. He weaned off just under 900lbs for a weaning ratio 117. His EPDs rank him in the top 1% for weaning weight, top 3% for yearling weight, and top 20% for marbling. His dam sired by Unanimous is as impressive as you will find. She has been successfully mated and flushed many times to some of the top bulls in the breed always freezing several quality embryos per flush.



Spring Bull Sale
April 3, 2024



Peak Dot  *Ranch Ltd.*

Carson Moneo
306-266-4414

Clay Moneo
306-266-4411

Email: peakdot@gmail.com

TEXT: 306-640-8760

THANK YOU

Let us know we can be of assistance

Online with DLMS
DLMS.CA

Online Frozen Genetics Sale