

PEAKE RANCHING



3rd Annual **HARDGRASS**

Bull Sale

Ranch Raised... Ranch Ready



Monday
MARCH 6 2017

*1 pm at the
Homestead Coulee Hall
55.7 km East of Drumheller on Hwy. 570*

PEAKE RANCHING

3rd Annual **HARDGRASS**

Bull Sale

Ranch Raised... Ranch Ready

Monday MARCH 6 2017

1 pm at the Homestead Coulee Hall

Auctioneer:

Dean Edge 403-704-0280

Sale Staff:

Andrew Reeleder 403-848-1260

Justin Keeley 403-629-6534

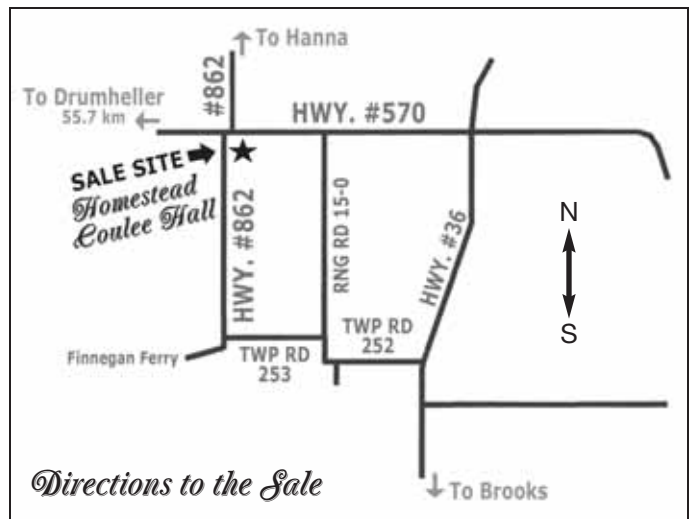
Special Representatives:

Rob Smith, CEO, Canadian Angus Association

Brian Good - Director, Canadian Angus Association Field Services

Dave Callaway, Angus World 403-549-2234

**FEATURING: 86 YEARLING ANGUS BULLS
24 TWO YEAR OLD ANGUS BULLS**



55.7 km East of Drumheller on Hwy. #570 or
South of Hanna to junction of Hwy. #570 & #862, south side of road

★ **VIDEO SALE** - the bulls will be on display at the Hall & sell on video

★ You can **LEAVE YOUR TRAILER AT HOME!**
Yearling bulls will be **DELIVERED FREE OF CHARGE**
within a 500 km radius after passing a
breeding soundness evaluation in the Spring

★ All bulls to be **VACCINATED**
WITH **FUSOGARD** foot rot vaccine.

INTERNET BIDDING AVAILABLE

Details Page 3



DjH

SALE MANAGED BY

**Douglas J. Henderson
& Associates Ltd.**

Doug & Linda Henderson

P.O. Box 5900, Lacombe, Alberta T4L 1X4

Phone: (403) 782-3888 Fax: (403) 782-3849 Cell: (403) 350-8541

Brody Gardner 403-994-0552

email: djhenderson@platinum.ca website: www.hendersoncattle.com

*Join us for beef on a bun prior
to the Sale & refreshments after*

PEAKE RANCHING

Stratton & Adrienne Peake
PEAKE RANCHING INC.
Box 3158
Drumheller, AB T0J 0Y0
C: 403-633-0815

Michelle Peake
PEAKE RANCHING INC.
RR 3
Hanna, AB T0J 1P0
C: 403-820-1443

Martina & Steve Wade
PEAKE RANCHING INC.
410 9th St. E
Drumheller, AB T0J 0Y5
C: 403-820-1715

Regan & Whitney Curry
R&W CATTLE CO.
Box 1, Site 2
Finnegan, AB T0J 1L0
C: 403-363-3563

PEAKE RANCHING

Welcome to our 3rd Annual Sale

Hello and Welcome to our 3rd Annual Bull Sale, which we have now decided to call the Hardgrass Bull Sale. On behalf of everyone here we would like to thank all of our customers for their continued support. Our thoughts have been with our friends and neighbors as they navigate the TB quarantine, we can all agree that there is hope for a quick and complete resolution.

As always we continue to strive to raise thrifty, productive cattle that thrive in our environment. For the past few years we have been fortunate enough to travel to the Genex Hawkeye West and ORlgen/ABS bull studs in Montana. This has enabled us to select AI sires with correct confirmation, foot quality and disposition. As well we have been attending the Montana Angus Tour which has given us the opportunity to meet some amazing people in the Angus industry and see a large variety of quality angus cattle.

Last fall we were given the opportunity to purchase the historic Flying U Ranch in Dorothy from Russell and Maxine Peake. This ranch has been in the Peake family for 111 years. We would like to thank Dan Sewell of Badlands Angus for the opportunity to stock this ranch with the purchase of his herd of reputation Red Angus cows. The first offering of Red Angus bulls from this herd will be available in 2018 at our Annual Hardgrass Bull Sale.

Again the bulls are being developed at Cattleland Feedyards on a limited barley test which enables us to evaluate their performance and quality. Please feel free to view the bulls at anytime and we would be happy to answer any questions you have.

Here is to continued profitability in all beef sectors!



Stratton & Adrienne



*Michelle & Rosie
on Tonto*



Martina & Steve



*Regan, Whitney,
Mason & Cheyenne*

DjH

*Welcome to the Peake Ranching & R&W Cattle Co.
3rd Annual Hardgrass Bull Sale*

This breeding program is really on the move, this third edition is the best yet.

You will be impressed with the uniformity, function, soundness, correctness and style of this group of great future herd sires that are sired by some of the industry's very top herd sires.

The dams of these bulls are moderate framed, easy fleshing, efficient cows with maternal, performance and stayability, the traits that have made the Angus cow famous and especially work for the cattlemen in the short grass areas. The Peake and R & W Angus are ranch raised and ranch ready.

The Peakes and Currys have been cattle people in the Dorothy area for well over a century and on their second decade in the purebred business. Their pledge is to supply bulls that will work well in the short grass prairie of eastern Alberta as well as anywhere quality Angus are appreciated.

Check out the Peake Ranching and R & W Cattle Co.'s three year Bull Guarantee, a unique and value added service, the Peakes and Currys are providing their customers.

If Stratton, Adrienne, Regan, Whitney, Michelle, Martina, Steve any of the sale staff, Linda or myself can be of assistance in anyway regarding this sale please feel free to contact us.

*Yours truly,
Doug J. Henderson*

Douglas J. Henderson & Associates Ltd.

P.O. Box 5900, Lacombe, Alberta T4L 1X4 Doug & Linda Henderson
Phone: (403) 782-3888 Fax: (403) 782-3849 Cell: (403) 350-8541

★ **PEAKE RANCHING INC. & R&W CATTLE CO.** ★
★ **3 YEAR BULL GUARANTEE** ★

All bulls offered for sale by Peake Ranching Inc. and R&W Cattle Co. are fertile and sound of hoof!

We have always strived for the highest customer satisfaction possible and, as a mark of our stringent selection process, we are proud to guarantee our bulls with respect to breeding soundness, good temperament, and sound feet.

Accordingly, each bull which sells for \$3,500.00 or more comes with a three (3) year guarantee starting the first day of turnout, which depreciates by 33% for each year the bull is in use. Our refunds are issued in the form of credit for upcoming sales or satisfactory replacement, if available. Sale credit is calculated as purchase price minus salvage value up to an \$8500 sale price, and must be used in the following calendar year.

Our bulls selling for \$3500.00 and over will be guaranteed against injury that renders them incapable of breeding. This Guarantee only applies to the original Purchaser and shall not apply to any bull that has not been maintained by the original purchaser at all times using good animal husbandry and management practices.

We will not guarantee against injuries or inability to breed arising out of the following causes:

1. Injury or loss caused by vehicles or equipment;
2. Injury or loss caused by act of God;
3. Injury or loss caused by failure to maintain good animal husbandry;
4. Injury or loss caused by predation;
5. Injury or loss caused from disease, feed intake, or poisoning.

To resolve a claim, the Purchaser must submit a claim to Peake Ranching Inc. and/or R&W Cattle Co. within fourteen (14) days of discovery of the injury or loss, which claim must be accompanied by a licensed veterinarian's verification of the injury or loss. Peake Ranching Inc. and/or R&W Cattle Co. reserves the right to semen check or verify the injury or loss claimed.

Can't make it to the sale?
Internet Bidding Available.

To view this sale visit www.dlms.ca, Fill out the registration form located under registration and sign-up for your free user account and select a username and password.

BIDDERS - To be approved as a bidder, Log in to dlms.ca and click BUYER APPROVAL tab, select the sale you are interested in bidding at and click sign up.

**For more information
Call DLMS Reps:**

**Mark Shologan 780.699.5082
Whitney Bosovich 780.991.3025**

DLMS
www.dlms.ca



LOT 1



Dam
LOT 1

PEAKE LADY ERICA 100Z



LOT 3



PEAKE EQUATION 288D

Male MP 288D 1937474 April 09 2016

O C C LEGACY 839L
CROWFOOT EQUATION 5793R 1254914
CROWFOOT FORKS 755K

N BAR EMULATION EXT AMF CAF OHF NHF DDF
PEAKE LADY ERICA 100Z 1671426
CROWFOOT LADY ERICA 6540S

O C C ECHELON 857E OHF DDF
O C C DIXIE ERICA 960E
TOMWALL PIED PIPER 413
GLADWALL B REV ERICA 7289
EMULATION N BAR 5522
N BAR PRIMROSE 2424 OHF
O C C MOONSHINE 740M
CROWFOOT LADY ERICA 4941P

BW: 97 lbs. Adj. 205D: 673 lbs. Jan. 11/17: 968 lbs.

EPDs BW: +4.0 P+ WW: +40 P+ YW: +71 P+ Milk: +27 P TM: +46

CE: +0.5 P MCE: +3.5 P



PEAKE EQUATION 212D

Male MP 212D 1937434 March 30 2016

O C C LEGACY 839L
CROWFOOT EQUATION 5793R 1254914
CROWFOOT FORKS 755K

S A V 004 DENSITY 4336 AMF CAF OHF NHF DDF
PEAKE MINA 192Z 1671274
DEER RIVER MINA 41M

O C C ECHELON 857E OHF DDF
O C C DIXIE ERICA 960E
TOMWALL PIED PIPER 413
GLADWALL B REV ERICA 7289
S A V 8180 TRAVELER 004 DMF DMF AMF CAF OHF NHF OSF DDF
S A V MAY 7238 CAF DDF
G A R BINGO 4192 AMF CAF OHF NHF DDF
DEER RIVER MINA 86G

BW: 90 lbs. Adj. 205D: 696 lbs. Jan. 11/17: 975 lbs.

EPDs BW: +2.2 P+ WW: +41 P+ YW: +78 P+ Milk: +22 P TM: +40

CE: +4.0 P MCE: +3.5 P



PEAKE EQUATION 308D

Male MP 308D 1937488 April 12 2016

O C C LEGACY 839L
CROWFOOT EQUATION 5793R 1254914
CROWFOOT FORKS 755K

DEER RIVER DANDY 244N
PEAKE DANDY 1J 27T 1430185
BJ MISS JANGLE 1J

O C C ECHELON 857E OHF DDF
O C C DIXIE ERICA 960E
TOMWALL PIED PIPER 413
GLADWALL B REV ERICA 7289
DEER RIVER TRAVELER 132F
DEER RIVER BARBARA 58B
BELVIN WALKER 26'96
BJ JESSIE 1F

BW: 96 lbs. Adj. 205D: 686 lbs. Jan. 11/17: 955 lbs.

EPDs BW: +4.6 P+ WW: +36 P+ YW: +58 P+ Milk: +23 P TM: +39

CE: -2.0 P MCE: +0.5 P



Reference

CROWFOOT EQUATION 5793R

BW: +3.9 WW: +36 YW: +73 Milk: +30 TM: +48
SC: +1.40 CE: -3.0 MCE: -2.0

A true beef bull that does it all, sons with moderate birth weight,
style and performance and superior daughters.
The Ideal bull for the commercial and purebred cattlemen.



LOT 4



Dam
LOT 4

PEAKE BURGESS 180Z



PEAKE EQUATION 285D

Male MP 285D 1937473 April 09 2016

O C C LEGACY 839L
CROWFOOT EQUATION 5793R 1254914
CROWFOOT FORKS 755K

O C C ECHELON 857E OHF DDF
O C C DIXIE ERICA 960E
TOMWALL PIED PIPER 413
GLADWALL B REV ERICA 7289

K C F BENNETT TOTAL AMF CAF OHF NHF DDF
PEAKE MISS BURGESS 180Z 1671293
DEER RIVER MISS BURGESS 152N

SITZ ALLIANCE 659S DMF AMF CAF OHF NHF DDF
EXT OF CONANGA 6790
G D A R TRAVELER 044 AMF CAF OHF NHF DDF
DEER RIVER MISS BURGESS 4Z

BW: 86 lbs. Adj. 205D: 626 lbs. Jan. 11/17: 857 lbs.
EPDs BW: +0.9 P+ WW: +33 P+ YW: +63 P+ Milk: +24 P TM: +41
CE: +4.5 P MCE: +6.0 P



LOT 5



PEAKE EQUATION 310D

Male MP 310D 1937490 April 13 2016

O C C LEGACY 839L
CROWFOOT EQUATION 5793R 1254914
CROWFOOT FORKS 755K

O C C ECHELON 857E OHF DDF
O C C DIXIE ERICA 960E
TOMWALL PIED PIPER 413
GLADWALL B REV ERICA 7289

DEER RIVER DANDY 244N
PEAKE DANDY 126M 21T 1417071
WILLABAR BARBARA 126M

DEER RIVER TRAVELER 132F
DEER RIVER BARBARA 58B
WILLABAR NEW TREND 188K
WILLABAR BARBARA 116K

BW: 95 lbs. Adj. 205D: 680 lbs. Jan. 11/17: 949 lbs.
EPDs BW: +3.5 P+ WW: +34 P+ YW: +58 P+ Milk: +23 P TM: +37
CE: +2.0 P MCE: +4.0 P



Dam
LOT 5

PEAKE DANDY 126M 21T



PEAKE EQUATION 334D

Male MP 334D 1937494 April 19 2016

O C C LEGACY 839L
CROWFOOT EQUATION 5793R 1254914
CROWFOOT FORKS 755K

O C C ECHELON 857E OHF DDF
O C C DIXIE ERICA 960E
TOMWALL PIED PIPER 413
GLADWALL B REV ERICA 7289

CROWFOOT 3770N
CCL FAVOURITE 73R 1279606
LLB FAVOURITE 333M

O C C HUNTER 928H AMF NHF
CROWFOOT BLACKY 1610L
EBON HILL VENTURE 48'2000
REMINGTON'S FAVORITE 112D

BW: 98 lbs. Adj. 205D: 692 lbs. Jan. 11/17: 920 lbs.
EPDs BW: +5.4 P+ WW: +37 P+ YW: +68 P+ Milk: +25 P TM: +41
CE: -4.5 P MCE: -1.5 P



LOT 6



PEAKE EQUATION 266D

Male MP 266D 1937467 April 07 2016

O C C LEGACY 839L
CROWFOOT EQUATION 5793R 1254914
 CROWFOOT FORKS 755K

CROWFOOT MECHANIC 5789R
PEAKE MECHANIC 7S 34U 1476052
 PEAKE EXT 7S

O C C ECHELON 857E OHF DDF
 O C C DIXIE ERICA 960E
 TOMWALL PIED PIPER 413
 GLADWALL B REV ERICA 7289

O C C MAGNUM 749M
 CROWFOOT BLACKBIRD 1687L
 N BAR EMULATION EXT AMF CAF OHF NHF DDF
 6S DUCHESS 11H

BW: 84 lbs. Adj. 205D: 641 lbs. Jan. 11/17: 892 lbs.

EPDs BW: +1.5 P+ WW: +35 P+ YW: +66 P+ Milk: +21 P TM: +38

CE: +2.0 P MCE: +5.5 P



PEAKE EQUATION 319D

Male MP 319D 1937492 April 15 2016

O C C LEGACY 839L
CROWFOOT EQUATION 5793R 1254914
 CROWFOOT FORKS 755K

G D A R TRAVELER 044 AMF CAF OHF NHF DDF
DEER RIVER MISS BURGESS 152N 1198223
 DEER RIVER MISS BURGESS 4Z

O C C ECHELON 857E OHF DDF
 O C C DIXIE ERICA 960E
 TOMWALL PIED PIPER 413
 GLADWALL B REV ERICA 7289

D H D TRAVELER 6807 AMF NHF
 G D A R BLACKCAP LADY 840
 G D A R RAINMAKER 340
 VONIE MISS BURGESS 60T

BW: 92 lbs. Adj. 205D: 674 lbs. Jan. 11/17: 875 lbs.

EPDs BW: +2.4 P+ WW: +35 P+ YW: +65 P+ Milk: +24 P TM: +38

CE: +4.5 P MCE: +5.5 P

PEAKE MECHANIC 7S 34U

*Bulls fed on a low barley
 & silage ration for
 proper development*



PEAKE EQUATION 243D

Male MP 243D 1937447 April 03 2016

O C C LEGACY 839L
CROWFOOT EQUATION 5793R 1254914
 CROWFOOT FORKS 755K

ML PIONEER 249Y
PEAKE MISS MORRISON 316A 1753285
 CCL MISS MORRISON 66T

O C C ECHELON 857E OHF DDF
 O C C DIXIE ERICA 960E
 TOMWALL PIED PIPER 413
 GLADWALL B REV ERICA 7289

S A V PIONEER 7301 AMF CAF OHF NHF DDF
 MERIT MISS QUALITY 2049
 CROWFOOT 3770N
 CCL MISS MORRISON 40P

BW: 84 lbs. Adj. 205D: 651 lbs. Jan. 11/17: 783 lbs.

EPDs BW: +1.7 P+ WW: +29 P+ YW: +60 P+ Milk: +26 P TM: +41

CE: +0.0 P MCE: +3.0 P



PEAKE EQUATION 329D

Male MP 329D 1937493 April 17 2016

O C C LEGACY 839L
CROWFOOT EQUATION 5793R 1254914
 CROWFOOT FORKS 755K

G A R EVAS CONSISTENCE 3803 AMF CAF OHF NHF DDF
DEER RIVER BLACKBIRD 292S 1351227
 DEER RIVER BLACKBIRD 161L

O C C ECHELON 857E OHF DDF
 O C C DIXIE ERICA 960E
 TOMWALL PIED PIPER 413
 GLADWALL B REV ERICA 7289

EMULATION N BAR 5522
 G A R EVAS R R TRAVELER 511
 DEER RIVER 044 TRAVELER 161J
 DEER RIVER BLACKBIRD 16Z

BW: 89 lbs. Adj. 205D: 594 lbs. Jan. 11/17: 842 lbs.

EPDs BW: +1.3 P+ WW: +34 P+ YW: +63 P+ Milk: +18 P TM: +36

CE: +0.5 P MCE: +1.5 P

DEER RIVER BLACKBIRD 292S



WCC RESOURCE 404D
Male XZ 404D 1940696 ET March 30 2016

RITO 707 OF IDEAL 3407 7075
S A V RESOURCE 1441 AMF CAF NHF DDF 1707295
S A V BLACKCAP MAY 4136 CAF

R R RITO 707 AMF CAF OHF NHF DDF
IDEAL 3407 OF 1418 076
S A V 8180 TRAVELER 004 DMF DNF AMF CAF OHF NHF OSF DDF
S A V MAY 2397 CAF
EMULATION N BAR 5522
N BAR PRIMROSE 2424 OHF
SUMMITCREST HI FLYER 3B18 AMF CAF OHF NHF DDF
6S ANNIE K 11J

N BAR EMULATION EXT AMF CAF OHF NHF DDF
PEAKE EXT 2S 1359641
BAR MC ANNIE K 2L

BW: 75 lbs. Adj. 205D: 716 lbs. Jan. 11/17: 1025 lbs.
EPDs BW: +1.4 P WW: +47 P YW: +89 P Milk: +19 P TM: +44
CE: +2.0 P MCE: +2.0 P <i>Recommended for Heifers</i>



WCC RESOURCE 406D
Male XZ 406D 1916082 March 30 2016

RITO 707 OF IDEAL 3407 7075
S A V RESOURCE 1441 AMF CAF NHF DDF 1707295
S A V BLACKCAP MAY 4136 CAF

R R RITO 707 AMF CAF OHF NHF DDF
IDEAL 3407 OF 1418 076
S A V 8180 TRAVELER 004 DMF DNF AMF CAF OHF NHF OSF DDF
S A V MAY 2397 CAF
S A V 004 PREDOMINANT 4438 AMF CAF OHF NHF DDF
CROWFOOT FORKS 456K
CROWFOOT LOGIC 4019P
CFCC 176K

CROWFOOT 6758S
PEAKE ROSETTE 248Y 1637610
CROWFOOT ROSETTE 6274S

BW: 85 lbs. Adj. 205D: 720 lbs. Jan. 11/17: 1115 lbs.
EPDs BW: +0.7 37% WW: +50 28% YW: +95 23% Milk: +21 20% TM: +46
CE: +5.0 26% MCE: +1.0 15%



PEAKE MISS BURGESS 180Z



WCC RESOURCE 419D
Male XZ 419D 1916090 April 03 2016

RITO 707 OF IDEAL 3407 7075
S A V RESOURCE 1441 AMF CAF NHF DDF 1707295
S A V BLACKCAP MAY 4136 CAF

R R RITO 707 AMF CAF OHF NHF DDF
IDEAL 3407 OF 1418 076
S A V 8180 TRAVELER 004 DMF DNF AMF CAF OHF NHF OSF DDF
S A V MAY 2397 CAF
EMULATION N BAR 5522
N BAR PRIMROSE 2424 OHF
N BAR TRANSITION A583
GLADWALL JEANNE T 2238

N BAR EMULATION EXT AMF CAF OHF NHF DDF
PEAKE JEANNE T 38W 1522449
CROWFOOT JEANNE T 959

BW: 67 lbs. Adj. 205D: 603 lbs. Jan. 11/17: 870 lbs.
EPDs BW: -1.3 38% WW: +46 29% YW: +87 24% Milk: +17 22% TM: +40
CE: +9.0 28% MCE: +7.0 17% <i>Recommended for Heifers</i>



WCC RESOURCE 420D
Male XZ 420D 1916097 April 04 2016

RITO 707 OF IDEAL 3407 7075
S A V RESOURCE 1441 AMF CAF NHF DDF 1707295
S A V BLACKCAP MAY 4136 CAF

R R RITO 707 AMF CAF OHF NHF DDF
IDEAL 3407 OF 1418 076
S A V 8180 TRAVELER 004 DMF DNF AMF CAF OHF NHF OSF DDF
S A V MAY 2397 CAF
N BAR EMULATION EXT AMF CAF OHF NHF DDF
LEACHMAN ERICA 0025
DEER RIVER TRAVELER 132F
DEER RIVER IDELETTE 135F

LEACHMAN RIGHT TIME DMF AMF
DEER RIVER IDELETTE 132P 1227625
DEER RIVER IDELETTE 251J

BW: 90 lbs. Adj. 205D: 697 lbs. Jan. 11/17: 968 lbs.
EPDs BW: +3.1 39% WW: +47 30% YW: +87 25% Milk: +21 22% TM: +45
CE: -1.0 29% MCE: +3.0 18%





15

WCC RESOURCE 430D

Male XZ 430D 1916100 April 06 2016

RITO 707 OF IDEAL 3407 7075
S A V RESOURCE 1441 AMF CAF NHF DDF 1707295
 S A V BLACKCAP MAY 4136 CAF

R R RITO 707 AMF CAF OHF NHF DDF
 IDEAL 3407 OF 1418 076
 S A V 8180 TRAVELER 004 DMF DMF AMF CAF OHF NHF OSF DDF
 S A V MAY 2397 CAF

LEMAR DAKOTA GOLD 18T AMF CAF OHF NHF DDF
PEAKE TRADITION 81Z 1671440
 SQUAW COULEE TRADITION 73U

MYTTY IN FOCUS AMF CAF OHF NHF DDF
 LEMAR PEGGY 74R
 WINTERING HILLS PERRY 18P
 SQUAW COULEE TRADITION 1P

BW: 91 lbs.	Adj. 205D: 776 lbs.	Jan. 11/17: 1161 lbs.
EPDs BW: +1.3 37%	WW: +58 28%	YW: +105 24%
CE: +4.0 27%	MCE: +2.0 16%	Milk: +24 20%
		TM: +53



16

WCC RESOURCE 431D

Male XZ 431D 1916099 April 06 2016

RITO 707 OF IDEAL 3407 7075
S A V RESOURCE 1441 AMF CAF NHF DDF 1707295
 S A V BLACKCAP MAY 4136 CAF

R R RITO 707 AMF CAF OHF NHF DDF
 IDEAL 3407 OF 1418 076
 S A V 8180 TRAVELER 004 DMF DMF AMF CAF OHF NHF OSF DDF
 S A V MAY 2397 CAF

LEMAR DAKOTA GOLD 18T AMF CAF OHF NHF DDF
PEAKE PRIDE 109Z 1671449
 CROWFOOT PRIDE 6310S

MYTTY IN FOCUS AMF CAF OHF NHF DDF
 LEMAR PEGGY 74R
 O C C LEGACY 839L
 CROWFOOT PRIDE 3901N

BW: 96 lbs.	Adj. 205D: 793 lbs.	Jan. 11/17: 1087 lbs.
EPDs BW: +2.6 37%	WW: +60 28%	YW: +107 24%
CE: +1.0 28%	MCE: -3.0 16%	Milk: +24 20%
		TM: +54

17

WCC RESOURCE 436D

Male XZ 436D 1916102 April 08 2016

RITO 707 OF IDEAL 3407 7075
S A V RESOURCE 1441 AMF CAF NHF DDF 1707295
 S A V BLACKCAP MAY 4136 CAF

R R RITO 707 AMF CAF OHF NHF DDF
 IDEAL 3407 OF 1418 076
 S A V 8180 TRAVELER 004 DMF DMF AMF CAF OHF NHF OSF DDF
 S A V MAY 2397 CAF

K C F BENNETT TOTAL AMF CAF OHF NHF DDF
PEAKE MISS BURGESS 234Z 1671306
 PEAKE DANDY 66L 10T

SITZ ALLIANCE 6595 DMF AMF CAF OHF NHF DDF
 EXT OF CONANGA 6790
 DEER RIVER DANDY 244N
 WHS WINTERING HILLS 66L

BW: 82 lbs.	Adj. 205D: 679 lbs.	Jan. 11/17: 971 lbs.
EPDs BW: +1.5 37%	WW: +50 28%	YW: +92 23%
CE: +3.0 28%	MCE: +2.0 17%	Milk: +20 21%
		TM: +45

S A V RESOURCE 1411

BW: +3.6 WW: +70 YW: +132 Milk: +23 TM: +58
SC: +1.51 CE: -4.0 MCE: -9.0

S A V Resource 1441 transmits real world fleshing ability, extreme muscle, masculinity and superior feet. He ranks near the top of the breed for WW, YW, DOC, Milk, CW, REA, SW and SF.





R&W IDELETTE 29A



R&W IDELETTE 23C



PEAKE ELSA ERICA 067X

18

R&W RESOURCE 54D

Male WP 54D 1924966 April 05 2016

RITO 707 OF IDEAL 3407 7075
S A V RESOURCE 1441 AMF CAF NHF DDF 1707295
 S A V BLACKCAP MAY 4136 CAF

R R RITO 707 AMF CAF OHF NHF DDF
 IDEAL 3407 OF 1418 076
 S A V 8180 TRAVELER 004 DMF DWF AMF CAF OHF NHF OSF DDF
 S A V MAY 2397 CAF

SINCLAIR NET PRESENT VALUE AMF CAF OHF NHF DDF
R&W IDELETTE 29A 1755254
 DEER RIVER IDELETTE 40R

N BAR PRIME TIME D806 AMF CAF OHF NHF DDF
 IDEAL 4465 OF 6807 4286 AMF NHF
 DEER RIVER ULTRA 156L
 DEER RIVER IDELETTE 177M

BW: 98 lbs.	Adj. 205D: 746 lbs.	Jan. 11/17: 1091 lbs.
EPDs BW: +3.9 37%	WW: +55 28%	YW: +101 23%
CE: -3.0 28%	MCE: -4.0 17%	Milk: +24 20%
TM: +52		

19

R&W RESOURCE 61D

Male WP 61D 1949782 April 06 2016

RITO 707 OF IDEAL 3407 7075
S A V RESOURCE 1441 AMF CAF NHF DDF 1707295
 S A V BLACKCAP MAY 4136 CAF

R R RITO 707 AMF CAF OHF NHF DDF
 IDEAL 3407 OF 1418 076
 S A V 8180 TRAVELER 004 DMF DWF AMF CAF OHF NHF OSF DDF
 S A V MAY 2397 CAF

K C F BENNETT TOTAL AMF CAF OHF NHF DDF
PEAKE IDELETTE 196Y 1630221
 DEER RIVER IDELETTE 91P

SITZ ALLIANCE 6595 DMF AMF CAF OHF NHF DDF
 EXT OF CONANGA 6790
 LEACHMAN RIGHT TIME DMF AMF
 DEER RIVER IDELETTE 136H

BW: 82 lbs.	Adj. 205D: 693 lbs.	Jan. 11/17: 947 lbs.
EPDs BW: +0.1 P+	WW: +47 P+	YW: +93 P+
CE: +2.5 P	MCE: +2.5 P	Milk: +23 P
TM: +48		



20

R&W RESOURCE 86D

Male WP 86D 1924982 April 11 2016

RITO 707 OF IDEAL 3407 7075
S A V RESOURCE 1441 AMF CAF NHF DDF 1707295
 S A V BLACKCAP MAY 4136 CAF

R R RITO 707 AMF CAF OHF NHF DDF
 IDEAL 3407 OF 1418 076
 S A V 8180 TRAVELER 004 DMF DWF AMF CAF OHF NHF OSF DDF
 S A V MAY 2397 CAF

REMITALL RESISTOR 602R
PEAKE ELSA ERICA 067X 1571326
 WILLABAR ELSA ERICA 243K

REMITALL NETWORK 1N
 CAYMEN ROSE 57'01
 WILLABAR PIPE LINE 2H
 WILLABAR ELSA ERICA 133C

BW: 84 lbs.	Adj. 205D: 673 lbs.	Jan. 11/17: 953 lbs.
EPDs BW: +2.0 37%	WW: +47 28%	YW: +87 22%
CE: +1.0 26%	MCE: -2.0 15%	Milk: +17 20%
TM: +41		



PEAKE ROSEBUD 14Y



R&W RESOURCE 84D

Male WP 84D 1951301 April 11 2016

RITO 707 OF IDEAL 3407 7075
S A V RESOURCE 1441 AMF CAF NHF DDF 1707295
 S A V BLACKCAP MAY 4136 CAF

HARB PENDLETON 765 J H AMF CAF OHF NHF DDF
PEAKE ROSEBUD 14Y 1604490
 SQUAW COULEE ROSEBUD 21M

R R RITO 707 AMF CAF OHF NHF DDF
 IDEAL 3407 OF 1418 076
 S A V 8180 TRAVELER 004 DMF DMF AMF CAF OHF NHF OSF DDF
 S A V MAY 2397 CAF

S A V FINAL ANSWER 0035 AMF CAF OHF NHF DDF
 H A R B BLACK LADY 375 J H
 ANGUS ACRES HEADS UP 31D
 FV 12U ROSEBUD 54F

BW: 83 lbs.	Adj. 205D: 620 lbs.	Jan. 11/17: 935 lbs.
EPDs BW: -0.3 P+	WW: +49 P+	YW: +94 P+
Milk: +18 P	TM: +47	CE: +3.0 P
MCE: +2.0 P		



R&W ROYAL LADY 81A



R&W RESOURCE 36D

Male WP 36D 1924956 April 02 2016

RITO 707 OF IDEAL 3407 7075
S A V RESOURCE 1441 AMF CAF NHF DDF 1707295
 S A V BLACKCAP MAY 4136 CAF

GDAR GAME DAY 449 AMF CAF OHF NHF DDF
R&W ROYAL LADY 81A 1755191
 SANDY CREEK ROYAL LADY 53'08

R R RITO 707 AMF CAF OHF NHF DDF
 IDEAL 3407 OF 1418 076
 S A V 8180 TRAVELER 004 DMF DMF AMF CAF OHF NHF OSF DDF
 S A V MAY 2397 CAF

BOYD NEW DAY 8005 AMF CAF OHF NHF DDF
 G D A R MISS WIX 474
 S A V INITIATIVE 4406 AMF CAF OHF NHF DDF
 SANDY CREEK ROYAL LADY 78'03

BW: 80 lbs.	Adj. 205D: 667 lbs.	Jan. 11/17: 979 lbs.
EPDs BW: +1.3 37%	WW: +55 28%	YW: +103 24%
Milk: +22 20%	TM: +50	CE: +4.0 28%
MCE: +2.0 17%		



SANDY CREEK ANNIE 64W



R&W RESOURCE 65D

Male WP 65D 1924973 April 06 2016

RITO 707 OF IDEAL 3407 7075
S A V RESOURCE 1441 AMF CAF NHF DDF 1707295
 S A V BLACKCAP MAY 4136 CAF

SINCLAIR EXTRA 4X13 AMF CAF OHF NHF DDF
SANDY CREEK ANNIE 64W 1495447
 SANDY CREEK ANNIE 20T

R R RITO 707 AMF CAF OHF NHF DDF
 IDEAL 3407 OF 1418 076
 S A V 8180 TRAVELER 004 DMF DMF AMF CAF OHF NHF OSF DDF
 S A V MAY 2397 CAF

N BAR EMULATION EXT AMF CAF OHF NHF DDF
 N BAR LADY IDA S C C 2P37
 H A IMAGE MAKER 0415 AMF CAF OHF NHF DDF
 SANDY CREEK ANNIE 2'05

BW: 94 lbs.	Adj. 205D: 741 lbs.	Jan. 11/17: 935 lbs.
EPDs BW: +2.4 38%	WW: +59 29%	YW: +106 24%
Milk: +23 21%	TM: +53	CE: +0.0 29%
MCE: +0.0 16%		



*Come early to view the bulls
 & join us for a beef on a bun lunch*

24

PEAKE CHINOOK 258D

Male MP 258D 1937459 April 05 2016

H A IMAGE MAKER 0415 AMF CAF OHF NHF DDF
SHIPWHEEL CHINOOK AMF OHF NHF DDF 1582467
 APEX ERISKAY 5506

HERO 6267 OF R R 2418
 H A RITO BLACKCAP 9038
 MYTTY IN FOCUS AMF CAF OHF NHF DDF
 APEXETTE ERISKAY 3032
 HYLINE RIGHT WAY 781 AMF CAF OHF NHF DDF
 BCC LADY WREN 24F
 BOYD NEW DAY 8005 AMF CAF OHF NHF DDF
 BCC CLARICE 26K

BCC RIGHT WAY 19S
CCL CLARICE 8U 1445919
 BCC CLARICE 62S

BW: 85 lbs. Adj. 205D: 698 lbs. Jan. 11/17: 1024 lbs.
EPDs BW: +0.3 P+ WW: +45 P+ YW: +78 P+ Milk: +25 P TM: +48
CE: +9.0 P MCE: +9.5 P



LOT 24

25

PEAKE CHINOOK 322D

Male MP 322D 1937491 April 15 2016

H A IMAGE MAKER 0415 AMF CAF OHF NHF DDF
SHIPWHEEL CHINOOK AMF OHF NHF DDF 1582467
 APEX ERISKAY 5506

HERO 6267 OF R R 2418
 H A RITO BLACKCAP 9038
 MYTTY IN FOCUS AMF CAF OHF NHF DDF
 APEXETTE ERISKAY 3032
 K C F BENNETT TOTAL AMF CAF OHF NHF DDF
 REMINGTON LADY 74P
 CROWFOOT 3770N
 RIVERCREST MARGARET 16M

REMINGTON TOTAL 306S
CCL MARGARET 71W 1499710
 CCL MARGARET 86T

BW: 97 lbs. Adj. 205D: 672 lbs. Jan. 11/17: 894 lbs.
EPDs BW: +1.6 P+ WW: +50 P+ YW: +87 P+ Milk: +22 P TM: +44
CE: +13.0 P MCE: +11.5 P



LOT 25

26

PEAKE CHINOOK 269D

Male MP 269D 1937466 April 07 2016

H A IMAGE MAKER 0415 AMF CAF OHF NHF DDF
SHIPWHEEL CHINOOK AMF OHF NHF DDF 1582467
 APEX ERISKAY 5506

HERO 6267 OF R R 2418
 H A RITO BLACKCAP 9038
 MYTTY IN FOCUS AMF CAF OHF NHF DDF
 APEXETTE ERISKAY 3032
 GDAR SVF RUSS 184B
 GDAR SVF FOREVER LADY 214D
 LEACHMAN RIGHT TIME DMF AMF
 LADY MONOGAM 67/94

SVF SIEBRINGS FOREVER RUSS AMF CAF OHF NHF DDF
ATLANTA F R MONOGRAM 70W 1526673
 B.B.A.R. LADY MONOGRAM 167/96

BW: 90 lbs. Adj. 205D: 635 lbs. Jan. 11/17: 899 lbs.
EPDs BW: +1.5 P+ WW: +48 P+ YW: +81 P+ Milk: +25 P TM: +50
CE: +8.5 P MCE: +10.5 P



Dam
LOT 25

CCL MARGARET 71W

Reference

SHIPWHEEL CHINOOK
 BW: -2.3 WW: +53 YW: +87 Milk: +26 TM: +53
 SC: +1.32 CE: +19.0 MCE: +17.0

Light birth weights, great calving ease,
 solid growth and maternal performance.



LOT 26

27

PEAKE CHINOOK 235D

Male MP 235D 1937450 April 03 2016

H A IMAGE MAKER 0415 AMF CAF OHF NHF DDF
SHIPWHEEL CHINOOK AMF OHF NHF DDF **1582467**
 APEX ERISKAY 5506

HERO 6267 OF R R 2418
 H A RITO BLACKCAP 9038
 MYTTY IN FOCUS AMF CAF OHF NHF DDF
 APEXETTE ERISKAY 3032

REMITALL H RACHIS 21R AMF NHF OSF
KSC COUNTESS 71U 1446036
 REMITALL COUNTESS 619R

REMITALL NIGHTHAWK 37N
 HENDERSON MISSIE 32'02
 WILLABAR EQUATOR 95J
 WILLABAR COUNTESS 7G

BW: 98 lbs. Adj. 205D: 694 lbs. Jan. 11/17: 971 lbs.
EPDs BW: +2.5 P+ WW: +51 P+ YW: +89 P+ Milk: +26 P TM: +51
CE: +4.0 P MCE: +6.5 P



Dam
LOT 29

CROWFOOT BLACKY 1140Y



Dam
LOT 30

PEAKE ANNIE K 53W



28

PEAKE CHINOOK 272D

Male MP 272D 1937465 April 07 2016

H A IMAGE MAKER 0415 AMF CAF OHF NHF DDF
SHIPWHEEL CHINOOK AMF OHF NHF DDF **1582467**
 APEX ERISKAY 5506

HERO 6267 OF R R 2418
 H A RITO BLACKCAP 9038
 MYTTY IN FOCUS AMF CAF OHF NHF DDF
 APEXETTE ERISKAY 3032

REMINGTON RIGHT TIME 156R
CCL MISSIE 80W 1499718
 CCL MISSIE 26P

LEACHMAN RIGHT TIME DMF AMF
 CRESCENT CREEK LASSIE 110E
 MVF TRAVELER 216M
 HENDERSON MISSIE 25'02

BW: 92 lbs. Adj. 205D: 658 lbs. Jan. 11/17: 904 lbs.
EPDs BW: +1.6 P+ WW: +43 P+ YW: +74 P+ Milk: +21 P TM: +42
CE: +4.5 P MCE: +4.5 P

29

PEAKE CHINOOK 270D

Male MP 270D 1937464 April 07 2016

H A IMAGE MAKER 0415 AMF CAF OHF NHF DDF
SHIPWHEEL CHINOOK AMF OHF NHF DDF **1582467**
 APEX ERISKAY 5506

HERO 6267 OF R R 2418
 H A RITO BLACKCAP 9038
 MYTTY IN FOCUS AMF CAF OHF NHF DDF
 APEXETTE ERISKAY 3032

CROWFOOT EQUATION 5793R
CROWFOOT BLACKY 1140Y 1646291
 CROWFOOT BLACKY 6275S

O C C LEGACY 839L
 CROWFOOT FORKS 755K
 O C C LEGACY 839L
 CROWFOOT BLACKY 1610L

BW: 92 lbs. Adj. 205D: 702 lbs. Jan. 11/17: 914 lbs.
EPDs BW: +1.3 P+ WW: +46 P+ YW: +81 P+ Milk: +25 P TM: +45
CE: +9.5 P MCE: +8.5 P

30

R&W DOUBLE VISION 13D

Male WP 13D 1950060 ET March 29 2016

CONNELLY REFLECTION AMF CAF OHF NHF DDF
JINDRA DOUBLE VISION AMF CAF OHF NHF DDF **1764385**
 HOFF RACHEL 8312 405

BON VIEW NEW DESIGN 878 AMF CAF OHF NHF DDF
 HAPPY GRILL OF CONANGA 6260
 HOFF LIMITED EDITION SC 594 AMF CAF OHF NHF DDF
 HOFF MISS EXPO S C 4223

SITZ ALLIANCE 9160
PEAKE ANNIE K 53W 1522445
 6S ANNIE K 19F

SITZ ALLIANCE 6595 DMF AMF CAF OHF NHF DDF
 SITZ BLACKCAP EFFIE 4088
 JOHNSTON VALOR 415D
 DOUBLE AA ANNIE K 522'93

BW: 82 lbs. Adj. 205D: lbs. Jan. 11/17: 1002 lbs.
EPDs BW: +0.3 P WW: +46 P YW: +83 P Milk: +26 P TM: +50
CE: +7.0 P MCE: +11.6 P



Reference

JINDRA DOUBLE VISION

BW: +1.5 WW: +62 YW: +121 Milk: +31 TM: +62
SC: +0.33 CE: +6.0 MCE: +10.0



R&W JANETTE 76A

31

R&W DOUBLE VISION 71D

Male WP 71D 1924975 April 07 2016

CONNEALY REFLECTION AMF CAF OHF NHF DDF
JINDRA DOUBLE VISION AMF CAF NHF DDF **1764385**
 HOFF RACHEL 8312 405

BON VIEW NEW DESIGN 878 AMF CAF OHF NHF DDF
 HAPPY GRILL OF CONANGA 6260
 HOFF LIMITED EDITION SC 594 AMF CAF OHF NHF DDF
 HOFF MISS EXPO S C 4223

PEAKE FINAL ANSWER 027X
R&W JANETTE 76A 1755223
 SANDY CREEK JANETTE 1/10

S A V FINAL ANSWER 0035 AMF CAF OHF NHF DDF
 CROWFOOT LADY 6057S
 GDAR GAME DAY 449 AMF CAF OHF NHF DDF
 SANDY CREEK JANETTE 36'08 DDF

BW: 90 lbs.	Adj. 205D: 750 lbs.	Jan. 11/17: 1009 lbs.			
EPDs BW: +1.5	36%	WW: +54	27%	YW: +102	22%
CE: +5.0	28%	MCE: +7.0	13%	Milk: +27	17%
		TM: +54			



32

R&W DOUBLE VISION 41D

Male WP 41D 1924961 April 03 2016

CONNEALY REFLECTION AMF CAF OHF NHF DDF
JINDRA DOUBLE VISION AMF CAF NHF DDF **1764385**
 HOFF RACHEL 8312 405

BON VIEW NEW DESIGN 878 AMF CAF OHF NHF DDF
 HAPPY GRILL OF CONANGA 6260
 HOFF LIMITED EDITION SC 594 AMF CAF OHF NHF DDF
 HOFF MISS EXPO S C 4223

LEMAR DAKOTA GOLD 18T AMF CAF OHF NHF DDF
R&W ROSEBUD 31A 1755139
 SQUAW COULEE ROSEBUD 004L

MYTTY IN FOCUS AMF CAF OHF NHF DDF
 LEMAR PEGGY 74R
 VIKING BLACK MAGIC 120H
 CUDLOBE ROSEBUD 49J

BW: 87 lbs.	Adj. 205D: 768 lbs.	Jan. 11/17: 1048 lbs.			
EPDs BW: +0.2	37%	WW: +53	28%	YW: +97	23%
CE: +8.0	29%	MCE: +9.0	13%	Milk: +30	18%
		TM: +57			



R&W ROSEBUD 31A

33

R&W DOUBLE VISION 93D

Male WP 93D 1924983 April 13 2016

CONNEALY REFLECTION AMF CAF OHF NHF DDF
JINDRA DOUBLE VISION AMF CAF NHF DDF **1764385**
 HOFF RACHEL 8312 405

BON VIEW NEW DESIGN 878 AMF CAF OHF NHF DDF
 HAPPY GRILL OF CONANGA 6260
 HOFF LIMITED EDITION SC 594 AMF CAF OHF NHF DDF
 HOFF MISS EXPO S C 4223

WINTERING HILLS PERRY 18P
SQUAW COULEE ROSEBUD 29U 1429999
 SQUAW COULEE ROSEBUD 63P

REMITALL LINEBACKER 204L
 WHS MADAME 26M
 SASKALTA OVERDRIVE 23K
 FV 12U ROSEBUD 54G

BW: 90 lbs.	Adj. 205D: 721 lbs.	Jan. 11/17: 888 lbs.			
EPDs BW: +1.4	37%	WW: +47	28%	YW: +84	23%
CE: +5.0	26%	MCE: +8.0	13%	Milk: +25	18%
		TM: +49			





LOT 34



Dam
LOT 34

PEAKE ROSEBUD 37Y



LOT 35



HF KODIAK 5R AMF CAF OHF NHF MAF DDF
HF TIGER 5T AMF CAF OHF NHF OSF DDF 1402252
HF ECHO 84R

HARB PENDLETON 765 J H AMF CAF OHF NHF DDF
PEAKE ROSEBUD 37Y 1604489
SQUAW COULEE ROSEBUD 004L

R&W TIGER 14D

Male WP 14D 1924949 March 29 2016

SANDY BAR ADVANTAGE 43M DDF
WILBAR RUBY 955N
TC FREEDOM 104 AMF CAF OHF NHF DDF
HFDF ECHO 6N

S A V FINAL ANSWER 0035 AMF CAF OHF NHF DDF
H A R B BLACK LADY 375 J H
VIKING BLACK MAGIC 120H
CUDLOBE ROSEBUD 49J

BW: 93 lbs.	Adj. 205D: 715 lbs.	Jan. 11/17: 1110 lbs.
EPDs BW: +1.7 38%	WW: +49 29%	YW: +93 23%
Milk: +31 22%	TM: +56	CE: +8.0 29%
MCE: +5.0 18%		



HF KODIAK 5R AMF CAF OHF NHF MAF DDF
HF TIGER 5T AMF CAF OHF NHF OSF DDF 1402252
HF ECHO 84R

WILLABAR PIPE LINE 2H
WILLABAR ELSA ERICA 243K 1033019
WILLABAR ELSA ERICA 133C

R&W TIGER 9D

Male WP 9D 1924948 Twin March 28 2016

SANDY BAR ADVANTAGE 43M DDF
WILBAR RUBY 955N
TC FREEDOM 104 AMF CAF OHF NHF DDF
HFDF ECHO 6N

WILLABAR RIGHT TIME 34E
WILLABAR LADY 181Y
WILLABAR JIMBO 26X
WILLABAR ELSA ERICA 90N

BW: 64 lbs.	Adj. 205D: 652 lbs.	Jan. 11/17: 994 lbs.
EPDs BW: +1.3 P	WW: +39 P	YW: +77 P
Milk: +21 P	TM: +40	CE: +4.5 P
MCE: +2.0 P		



Dam
LOT 35

WILLABAR ELSA ERICA 243K



Reference

HF TIGER 5T

BW: +0.0 **WW:** +57 **YW:** +112 **Milk:** +33 **TM:** +62
SC: +0.92 **CE:** +14.0 **MCE:** +7.0

HF Tiger 5T sires thick easy doing cattle with moderate birth weight, lots of hair and good performance.





Reference

S A V 004 PREDOMINANT 4438

BW: +1.9 WW: +53 YW: +86 Milk: +24 TM: +51
 SC: +1.06 CE: +9.0 MCE: +11.0



Dam
LOT 36

R&W BLACKCAP 59A



LOT 37



LOT 38



Dam
LOT 38

SANDY CREEK JANETTE 36'08



36

R&W PREDOMINANT 53D

Male WP 53D 1924965 April 05 2016

S A V 8180 TRAVELER 004 DMF DMF AMF CAF OHF NHF OSF DDF
S A V 004 PREDOMINANT 4438 AMF CAF OHF NHF DDF **1291656**
 S A V EMBLYNETTE 1182

SITZ TRAVELER 8180 AMF CAF OHF NHF DDF
 BOYD FOREVER LADY 8003
 S A F 598 BANDO 5175 AMF CAC DDF
 S A V EMBLYNETTE 7319

PEAKE FINAL ANSWER 027X
R&W BLACKCAP 59A 1755220
 SANDY CREEK BLACKCAP 75W

S A V FINAL ANSWER 0035 AMF CAF OHF NHF DDF
 CROWFOOT LADY 6057S
 WOODHILL FORESIGHT AMF CAF OHF NHF DDF
 SANDY CREEK BLACKCAP 2'99

BW: 78 lbs. Adj. 205D: 680 lbs. Jan. 11/17: 906 lbs.
 EPDs BW: -0.2 37% WW: +43 27% YW: +77 22% Milk: +20 20% TM: +42
 CE: +10.0 28% MCE: +11.0 17% *Recommended for Heifers*



37

R&W PREDOMINANT 48D

Male WP 48D 1949781 April 04 2016

S A V 8180 TRAVELER 004 DMF DMF AMF CAF OHF NHF OSF DDF
S A V 004 PREDOMINANT 4438 AMF CAF OHF NHF DDF **1291656**
 S A V EMBLYNETTE 1182

SITZ TRAVELER 8180 AMF CAF OHF NHF DDF
 BOYD FOREVER LADY 8003
 S A F 598 BANDO 5175 AMF CAC DDF
 S A V EMBLYNETTE 7319

K C F BENNETT TOTAL AMF CAF OHF NHF DDF
PEAKE DUCHESS 189Y 1630216
 DEER RIVER DUCHESS 37P

SITZ ALLIANCE 6595 DMF AMF CAF OHF NHF DDF
 EXT OF CONANGA 6790
 LEACHMAN RIGHT TIME DMF AMF
 DEER RIVER DUCHESS 20L

BW: 92 lbs. Adj. 205D: 718 lbs. Jan. 11/17: 934 lbs.
 EPDs BW: +1.9 P+ WW: +47 P+ YW: +81 P+ Milk: +19 P TM: +40
 CE: +8.5 P MCE: +12.0 P



38

R&W ALLIANCE 25D

Male WP 25D 1935309 ET March 31 2016

SITZ TRAVELER 8180 AMF CAF OHF NHF DDF
SITZ ALLIANCE 6595 DMF AMF CAF OHF NHF DDF **1036949**
 SITZ BARBARAMERE JET 2698

G D A R TRAVELER 71 AMF CAF OHF NHF DDF
 SITZ EVERELDA ENTENSE 1137
 3 BAR SPIKE 1766
 SITZ BARAMERE JET 155

S A V INITIATIVE 4406 AMF CAF OHF NHF DDF
SANDY CREEK JANETTE 36'08 DDF **1433734**
 SANDY CREEK JANETTE 4'05

S A V 8180 TRAVELER 004 DMF DMF AMF CAF OHF NHF OSF DDF
 S A V MISS BOBBIE 0405
 LCC NEW STANDARD AMF CAF OHF NHF DDF
 SANDY CREEK JANETTE 54'02

BW: 90 lbs. Adj. 205D: 667 lbs. Jan. 11/17: 964 lbs.
 EPDs BW: +2.2 P WW: +46 P YW: +87 P Milk: +27 P TM: +48
 CE: +3.5 P MCE: +8.5 P



40

WCC ANGUS VALLEY 413D

Male XZ 413D 1916088 April 02 2016

S A V IRON MOUNTAIN 8066 AMF CAF OHF NHF MAF DDF
S A V ANGUS VALLEY 1867 AMF CAF NHF DDF 1719214
 S A V MAY 2397 CAF

PEAK DOT DYNAMITE 34U
SANDY CREEK JANETTE 19/10 1557823
 SANDY CREEK JANETTE 42'08

TC GRIDIRON 258 AMF CAF OHF NHF DDF
 S A V MADAME PRIDE 3249 CAF DDF
 S A F 598 BANDO 5175 AMF CAC DDF
 S A V MAY 7238 CAF DDF

MOHNEN DYNAMITE 1356 AMF CAF OHF NHF DDF
 DIVINA OF PEAK DOT 541S
 BAD LANDS AMBUSH 37N
 SANDY CREEK JANETTE 2'97

BW: 95 lbs.	Adj. 205D: 742 lbs.	Jan. 11/17: 1005 lbs.						
EPDs BW: +2.0	37%	WW: +49	28%	YW: +91	21%	Milk: +22	20%	TM: +47
CE: +6.0	29%	MCE: +8.0	16%					



41

WCC ANGUS VALLEY 415D

Male XZ 415D 1916091 April 03 2016

S A V IRON MOUNTAIN 8066 AMF CAF OHF NHF MAF DDF
S A V ANGUS VALLEY 1867 AMF CAF NHF DDF 1719214
 S A V MAY 2397 CAF

WINTERING HILLS PERRY 18P
SQUAW COULEE TRADITION 73U 1430164
 SQUAW COULEE TRADITION 1P

TC GRIDIRON 258 AMF CAF OHF NHF DDF
 S A V MADAME PRIDE 3249 CAF DDF
 S A F 598 BANDO 5175 AMF CAC DDF
 S A V MAY 7238 CAF DDF

REMITALL LINEBACKER 204L
 WHS MADAME 26M
 DOUBLE BAR ROGUE CAF OHF
 JOHNSTON 12U TRADITION 224H

BW: 77 lbs.	Adj. 205D: 650 lbs.	Jan. 11/17: 991 lbs.						
EPDs BW: -0.1	37%	WW: +36	28%	YW: +73	23%	Milk: +23	21%	TM: +41
CE: +10.0	27%	MCE: +11.0	17%	<i>Recommended for Heifers</i>				



42

WCC ANGUS VALLEY 421D

Male XZ 421D 1916096 April 04 2016

S A V IRON MOUNTAIN 8066 AMF CAF OHF NHF MAF DDF
S A V ANGUS VALLEY 1867 AMF CAF NHF DDF 1719214
 S A V MAY 2397 CAF

H A IMAGE MAKER 0415 AMF CAF OHF NHF DDF
SANDY CREEK ROYAL LADY 46'08 1433742
 SANDY CREEK ROYAL LADY 67S

TC GRIDIRON 258 AMF CAF OHF NHF DDF
 S A V MADAME PRIDE 3249 CAF DDF
 S A F 598 BANDO 5175 AMF CAC DDF
 S A V MAY 7238 CAF DDF

HERO 6267 OF R R 2418
 H A RITO BLACKCAP 9038
 BAD LANDS AMBUSH 37N
 SANDY CREEK ROYAL LADY 12'99

BW: 80 lbs.	Adj. 205D: 678 lbs.	Jan. 11/17: 952 lbs.						
EPDs BW: -0.6	38%	WW: +47	29%	YW: +87	24%	Milk: +24	21%	TM: +48
CE: +12.0	30%	MCE: +13.0	18%					

39

WCC ANGUS VALLEY 402D

Male XZ 402D 1916080 March 25 2016

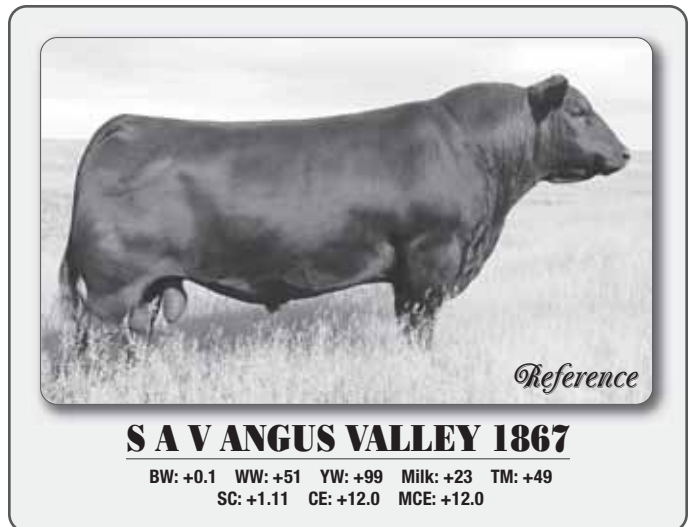
S A V IRON MOUNTAIN 8066 AMF CAF OHF NHF MAF DDF
S A V ANGUS VALLEY 1867 AMF CAF NHF DDF 1719214
 S A V MAY 2397 CAF

H A IMAGE MAKER 0415 AMF CAF OHF NHF DDF
CROWFOOT KAWICH 8118U 1456156
 CROWFOOT KAWICH 6170S

TC GRIDIRON 258 AMF CAF OHF NHF DDF
 S A V MADAME PRIDE 3249 CAF DDF
 S A F 598 BANDO 5175 AMF CAC DDF
 S A V MAY 7238 CAF DDF

HERO 6267 OF R R 2418
 H A RITO BLACKCAP 9038
 O C C LEGACY 839L
 CROWFOOT KAWICH 1758L

BW: 74 lbs.	Adj. 205D: 653 lbs.	Jan. 11/17: 988 lbs.						
EPDs BW: -1.8	38%	WW: +45	29%	YW: +85	24%	Milk: +23	22%	TM: +46
CE: +14.0	31%	MCE: +13.0	18%	<i>Recommended for Heifers</i>				





WCC ANGUS VALLEY 424D

Male XZ 424D 1916092 April 04 2016

S A V IRON MOUNTAIN 8066 AMF CAF OHF NHF MAF DDF
S A V ANGUS VALLEY 1867 AMF CAF NHF DDF 1719214
S A V MAY 2397 CAF

TC GRIDIRON 258 AMF CAF OHF NHF DDF
S A V MADAME PRIDE 3249 CAF DDF
S A F 598 BANDO 5175 AMF CAC DDF
S A V MAY 7238 CAF DDF

S A V 004 DENSITY 4336 AMF CAF OHF NHF DDF
PEAKE MERLE 108Z 1671448
CROWFOOT MERLE 6536S

S A V 8180 TRAVELER 004 DMF DWF AMF CAF OHF NHF OSF DDF
S A V MAY 7238 CAF DDF
CROWFOOT 3199N
CROWFOOT MERLE 2691M

BW: 89 lbs. Adj. 205D: 686 lbs. Jan. 11/17: 981 lbs.

EPDs BW: +2.1 37% WW: +45 28% YW: +86 23% Milk: +19 20% TM: +42

CE: +6.0 29% MCE: +8.0 16%



WCC ANGUS VALLEY 427D

Male XZ 427D 1916098 April 05 2016

S A V IRON MOUNTAIN 8066 AMF CAF OHF NHF MAF DDF
S A V ANGUS VALLEY 1867 AMF CAF NHF DDF 1719214
S A V MAY 2397 CAF

TC GRIDIRON 258 AMF CAF OHF NHF DDF
S A V MADAME PRIDE 3249 CAF DDF
S A F 598 BANDO 5175 AMF CAC DDF
S A V MAY 7238 CAF DDF

CROWFOOT 6228S
PEAKE 6228S 6262S 17U 1480909
CROWFOOT LOVEMERE 6262S

O C C JOKER 620J OHF DDF
CROWFOOT BARDOLINE 1040L
CONNELLY FREIGHTLINER AMF CAF NHF DDF
CROWFOOT LOVEMERE R 9101

BW: 88 lbs. Adj. 205D: 612 lbs. Jan. 11/17: 929 lbs.

EPDs BW: +0.2 37% WW: +33 28% YW: +66 22% Milk: +22 21% TM: +39

CE: +9.0 28% MCE: +10.0 16%



WCC ANGUS VALLEY 437D

Male XZ 437D 1916103 April 08 2016

S A V IRON MOUNTAIN 8066 AMF CAF OHF NHF MAF DDF
S A V ANGUS VALLEY 1867 AMF CAF NHF DDF 1719214
S A V MAY 2397 CAF

TC GRIDIRON 258 AMF CAF OHF NHF DDF
S A V MADAME PRIDE 3249 CAF DDF
S A F 598 BANDO 5175 AMF CAC DDF
S A V MAY 7238 CAF DDF

N BAR EMULATION EXT AMF CAF OHF NHF DDF
PEAKE DIXIE ERICA 44W 1522463
CROWFOOT DIXIE ERICA 2629M

EMULATION N BAR 5522
N BAR PRIMROSE 2424 OHF
CROWFOOT FORKS 655K
C H DIXIE ERICA 9608

BW: 99 lbs. Adj. 205D: 769 lbs. Jan. 11/17: 1068 lbs.

EPDs BW: +3.1 38% WW: +49 29% YW: +87 24% Milk: +23 22% TM: +48

CE: +2.0 29% MCE: +8.0 18%





47

PEAKE GOLDMERE 274D

Male MP 274D 1951204 April 08 2016

COLE CREEK GOLDMERE 581
PEAKE GOLDMERE 205B 1806368
 CROWFOOT ELINE ERICA 2095Z

COLE CREEK GOLDMERE 70V
 COLE CREEK JUANADA 92T
 CROWFOOT 6758S
 CROWFOOT ELINE ERICA 6184S

CROWFOOT 6758S
XO CROWFOOT MERLE 294Z 1689463
 XO CROWFOOT MERLE 966W

S A V 004 PREDOMINANT 4438 AMF CAF OHF NHF DDF
 CROWFOOT FORKS 456K
 CROWFOOT JOKER 6172S
 CROWFOOT MERLE 6002S

BW: 86 lbs.	Adj. 205D: 684 lbs.	Jan. 11/17: 969 lbs.			
EPDs BW: +0.6 P+	WW: +36 P+	YW: +60 P+	Milk: +21 P	TM: +38	
CE: +8.0 P			MCE: +8.0 P		

46

PEAKE GOLDMERE 356D

Male MP 356D 1949061 May 03 2016

COLE CREEK GOLDMERE 581
PEAKE GOLDMERE 205B 1806368
 CROWFOOT ELINE ERICA 2095Z

COLE CREEK GOLDMERE 70V
 COLE CREEK JUANADA 92T
 CROWFOOT 6758S
 CROWFOOT ELINE ERICA 6184S

REMITALL H RACHIS 21R AMF NHF OSF
CCL BLACKBIRD 34U 1445937
 JUSTAMERE 0405 BLACKBIRD 348N

REMITALL NIGHTHAWK 37N
 HENDERSON MISSIE 32'02
 ROTH REGULATOR 0405 CAF
 RR ENVIOUS BLACKBIRD 9982

BW: 94 lbs.	Adj. 205D: 727 lbs.	Jan. 11/17: 941 lbs.			
EPDs BW: +2.7 P+	WW: +43 P+	YW: +74 P+	Milk: +25 P	TM: +46	
CE: +2.0 P			MCE: +3.5 P		

48

PEAKE GOLDMERE 348D

Male MP 348D 1949068 April 28 2016

COLE CREEK GOLDMERE 581
PEAKE GOLDMERE 205B 1806368
 CROWFOOT ELINE ERICA 2095Z

COLE CREEK GOLDMERE 70V
 COLE CREEK JUANADA 92T
 CROWFOOT 6758S
 CROWFOOT ELINE ERICA 6184S

CROWFOOT 3770N
CCL QUEEN 47R 1292371
 CCL QUEEN 10N

O C C HUNTER 928H AMF NHF
 CROWFOOT BLACKY 1610L
 TC STOCKMAN 365 OHF DDF
 KLUZAK QUEEN 182E

BW: 92 lbs.	Adj. 205D: 691 lbs.	Jan. 11/17: 925 lbs.			
EPDs BW: +2.1 P+	WW: +37 P+	YW: +60 P+	Milk: +22 P	TM: +39	
CE: +7.0 P			MCE: +8.5 P		



49

PEAKE GOLDMERE 363D

Male MP 363D 1949059 May 05 2016

COLE CREEK GOLDMERE 581
PEAKE GOLDMERE 205B 1806368
 CROWFOOT ELINE ERICA 2095Z

COLE CREEK GOLDMERE 70V
 COLE CREEK JUANADA 92T
 CROWFOOT 6758S
 CROWFOOT ELINE ERICA 6184S

BROOKMORE SPECIAL DESIGN 178S
CCL TIBBIE 123W 1499754
 CCL TIBBIE 81S

W C C SPECIAL DESIGN L309 AMF CAF OHF NHF DDF
 BROOKMORE BELLA 119H
 WA SCOTCH FOCUS 405
 CCL TIBBIE 9N

BW: 87 lbs.	Adj. 205D: 586 lbs.	Jan. 11/17: 780 lbs.			
EPDs BW: +0.1 P+	WW: +31 P+	YW: +51 P+	Milk: +15 P	TM: +34	
CE: +6.5 P			MCE: +6.5 P		



PEAKE GOLDMERE 205B

BW: -1.1 WW: +34 YW: +51 Milk: +19 TM: +37
CE: +14.0 MCE: +10.0

50

PEAKE EMULATION 211D

Male MP 211D 1948944 March 30 2016

N BAR EMULATION EXT AMF CAF OHF NHF DDF
PEAKE EMULATION EXT 121Z 1671431
YY MEADOW 624S

SINCLAIR ENTREPRENEUR 8R101 CAF NHF DDF
PEAKE RUTH 254B 1820409
CCL RUTH 32W

EMULATION N BAR 5522
N BAR PRIMROSE 2424 OHF
CROWFOOT LOGIC 4019P
RED YY MEADOW 424P
R R RITO 707 AMF CAF OHF NHF DDF
N BAR KINCHTRY BEAUTY Z1925
REMINGTON TOTAL 306S
CCL RUTH 102T

BW: 85 lbs. Adj. 205D: 680 lbs. Jan. 11/17: 846 lbs.
EPDs BW: +2.1 P+ WW: +39 P+ YW: +66 P+ Milk: +12 P TM: +28
CE: +8.0 P MCE: +9.0 P



N Bar Emulation EXT
Grandsire of Lots 50 - 53

51

PEAKE EMULATION 242D

Male MP 242D 1948941 April 04 2016

N BAR EMULATION EXT AMF CAF OHF NHF DDF
PEAKE EMULATION EXT 121Z 1671431
YY MEADOW 624S

SOUTHLAND THRILLER 15Z
PEAKE BLACK LADY 358B 1813502
PEAKE 06X

EMULATION N BAR 5522
N BAR PRIMROSE 2424 OHF
CROWFOOT LOGIC 4019P
RED YY MEADOW 424P
SOUTHLAND THRILLER 83X DDF
SOUTHLAND BARBARA 16L
JUSTAMERE RIGHT ON TIME 158R
SOO LINE BLACK LADY 7321

BW: 73 lbs. Adj. 205D: 653 lbs. Jan. 11/17: 793 lbs.
EPDs BW: +0.4 P+ WW: +27 P+ YW: +43 P+ Milk: +17 P TM: +30
CE: +3.5 P MCE: +8.0 P <i>Recommended for Heifers</i>



52

PEAKE EMULATION 252D

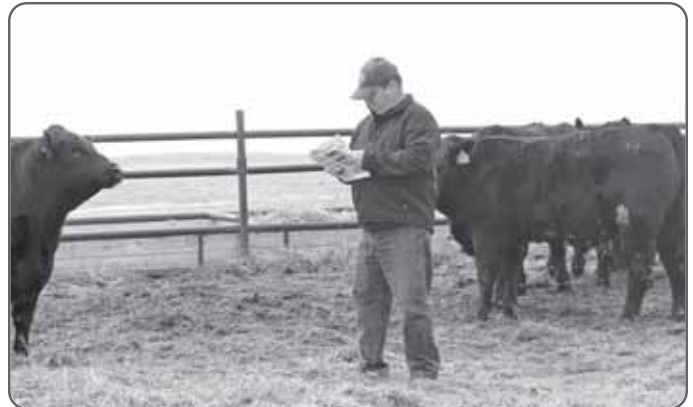
Male MP 252D 1948942 April 05 2016

N BAR EMULATION EXT AMF CAF OHF NHF DDF
PEAKE EMULATION EXT 121Z 1671431
YY MEADOW 624S

SHIPWHEEL CHINOOK AMF OHF NHF DDF
PEAKE MISSIE 261B 1813471
CCL MISSIE 80W

EMULATION N BAR 5522
N BAR PRIMROSE 2424 OHF
CROWFOOT LOGIC 4019P
RED YY MEADOW 424P
H A IMAGE MAKER 0415 AMF CAF OHF NHF DDF
APEX ERISKAY 5506
REMINGTON RIGHT TIME 156R
CCL MISSIE 26P

BW: 78 lbs. Adj. 205D: 669 lbs. Jan. 11/17: 899 lbs.
EPDs BW: +0.3 P+ WW: +31 P+ YW: +56 P+ Milk: +19 P TM: +35
CE: +7.5 P MCE: +8.5 P <i>Recommended for Heifers</i>



53

PEAKE EMULATION 345D

Male MP 345D 1949067 April 28 2016

N BAR EMULATION EXT AMF CAF OHF NHF DDF
PEAKE EMULATION EXT 121Z 1671431
YY MEADOW 624S

SOUTHLAND THRILLER 15Z
PEAKE QUEEN 329B 1813493
CCL QUEEN 47R

EMULATION N BAR 5522
N BAR PRIMROSE 2424 OHF
CROWFOOT LOGIC 4019P
RED YY MEADOW 424P
SOUTHLAND THRILLER 83X DDF
SOUTHLAND BARBARA 16L
CROWFOOT 3770N
CCL QUEEN 10N

BW: 78 lbs. Adj. 205D: 679 lbs. Jan. 11/17: 856 lbs.
EPDs BW: +1.4 P+ WW: +27 P+ YW: +46 P+ Milk: +18 P TM: +30
CE: +4.5 P MCE: +9.5 P <i>Recommended for Heifers</i>





Reference

R&W CONCLUSION 34B

BW: -3.8 WW: +51 YW: +74 Milk: +15 TM: +49
CE: +9.7 MCE: +6.6



LOT 56



R&W CONCLUSION 4D

Male WP 4D 1935287 March 23 2016

S A V FINAL ANSWER 0035 AMF CAF OHF NHF DDF
R&W CONCLUSION 34B 1807747
CROWFOOT LADY 6057S

SITZ TRAVELER 8180 AMF CAF OHF NHF DDF
S A V EMULOUS 8145 CAF
CROWFOOT LOGIC 4019P
CROWFOOT LADY 4029P

PEAKE LEGACY 02X AMF CAF NHF
R&W EBA 153B 1807838
DEER RIVER EBA 300P

O C C LEGACY 839L
PEAKE 243K 35R
DEER RIVER TRAVELER 178L
WILLABAR EBA 38G

BW: 76 lbs.	Adj. 205D: 612 lbs.	Jan. 11/17: 869 lbs.
EPDs BW: +0.0 32%	WW: +29 21%	YW: +58 12%
Milk: +18 10%	TM: +33	CE: +4.0 22%
MCE: +3.0 8%		



R&W CONCLUSION 3D

Male WP 3D 1935288 March 22 2016

S A V FINAL ANSWER 0035 AMF CAF OHF NHF DDF
R&W CONCLUSION 34B 1807747
CROWFOOT LADY 6057S

SITZ TRAVELER 8180 AMF CAF OHF NHF DDF
S A V EMULOUS 8145 CAF
CROWFOOT LOGIC 4019P
CROWFOOT LADY 4029P

PEAKE LEGACY 02X AMF CAF NHF
R&W IDELETTE 154B 1807840
DEER RIVER IDELETTE 40R

O C C LEGACY 839L
PEAKE 243K 35R
DEER RIVER ULTRA 156L
DEER RIVER IDELETTE 177M

BW: 83 lbs.	Adj. 205D: 663 lbs.	Jan. 11/17: 915 lbs.
EPDs BW: +1.8 32%	WW: +36 21%	YW: +70 12%
Milk: +21 10%	TM: +39	CE: +0.0 22%
MCE: +1.0 8%		



RED R&W CONCLUSION 11D

Male WP 11D 1925085 March 29 2016

S A V FINAL ANSWER 0035 AMF CAF OHF NHF DDF
R&W CONCLUSION 34B 1807747
CROWFOOT LADY 6057S

SITZ TRAVELER 8180 AMF CAF OHF NHF DDF
S A V EMULOUS 8145 CAF
CROWFOOT LOGIC 4019P
CROWFOOT LADY 4029P

SHEIDAGHAN RIGHT TIME 58Z
R&W PRIDE 68B 1807771
SQUAW COULEE PRIDE 57R

LEACHMAN RIGHT TIME DMF AMF
CRESCENT CREEK ROSEBUD 38K
CRESCENT CREEK BRAVE HEART 35F
SQUAW COULEE PRIDE 52K

BW: 74 lbs.	Adj. 205D: 643 lbs.	Jan. 11/17: 890 lbs.
EPDs BW: -0.5 10%	WW: +56 10%	YW: +92 10%
Milk: +20 8%	TM: +48	CE: +6.1 0%
MCE: +5.3 0%		Recommended for Heifers



R&W CONCLUSION 2D

Male WP 2D 1935289 March 20 2016

S A V FINAL ANSWER 0035 AMF CAF OHF NHF DDF
R&W CONCLUSION 34B 1807747
CROWFOOT LADY 6057S

SITZ TRAVELER 8180 AMF CAF OHF NHF DDF
S A V EMULOUS 8145 CAF
CROWFOOT LOGIC 4019P
CROWFOOT LADY 4029P

WJ MECHANIC 257X
R&W BLACKBIRD 104B 1807801
DEER RIVER BLACKBIRD 67N

CROWFOOT MECHANIC 5789R
WJ ERICA 7010T
G T MAXIMUM AMF CAF OHF NHF DDF
DEER RIVER BLACKBIRD 7Z

BW: 66 lbs.	Adj. 205D: 565 lbs.	Jan. 11/17: 841 lbs.
EPDs BW: -1.9 32%	WW: +27 21%	YW: +53 13%
Milk: +15 10%	TM: +29	CE: +12.0 22%
MCE: +10.0 8%		Recommended for Heifers



LOT 55



LOT 57



R&W CONCLUSION 23D

Male WP 23D 1935294 March 31 2016

S A V FINAL ANSWER 0035 AMF CAF OHF NHF DDF
R&W CONCLUSION 34B 1807747
CROWFOOT LADY 6057S

SITZ TRAVELER 8180 AMF CAF OHF NHF DDF
S A V EMULOUS 8145 CAF
CROWFOOT LOGIC 4019P
CROWFOOT LADY 4029P

SHEIDAGHAN RIGHT TIME 58Z
R&W NEONIA 128B 1807819
REMITALL NEONIA 128N

LEACHMAN RIGHT TIME DMF AMF
CRESCENT CREEK ROSEBUD 38K
REMITALL LEGIONAIRE 8L
HAPPYVALE JRP NEONIA 18E

BW: 78 lbs.	Adj. 205D: 647 lbs.	Jan. 11/17: 839 lbs.
EPDs BW: -0.6 32%	WW: +32 21%	YW: +57 12%
CE: +6.0 22%	MCE: +8.0 8%	TM: +35

Recommended for Heifers



S A V Final
Answer 0035

Grandsire of
Lots 54 - 60



R&W CONCLUSION 20D

Male WP 20D 1935293 March 30 2016

S A V FINAL ANSWER 0035 AMF CAF OHF NHF DDF
R&W CONCLUSION 34B 1807747
CROWFOOT LADY 6057S

SITZ TRAVELER 8180 AMF CAF OHF NHF DDF
S A V EMULOUS 8145 CAF
CROWFOOT LOGIC 4019P
CROWFOOT LADY 4029P

PEAKE RESISTOR 022X AMF CAF NHF
R&W IDELETTE 10B 1821769
PEAKE IDELETTE 199Z

REMITALL RESISTOR 602R
WILLABAR BARBARA 126M
GDAR GAME DAY 449 AMF CAF OHF NHF DDF
DEER RIVER IDELETTE 40R

BW: 73 lbs.	Adj. 205D: 628 lbs.	Jan. 11/17: 809 lbs.
EPDs BW: -1.4 32%	WW: +27 21%	YW: +52 12%
CE: +9.0 23%	MCE: +7.0 7%	TM: +35

Recommended for Heifers



R&W CONCLUSION 10D

Male WP 10D 1948899 March 29 2016

S A V FINAL ANSWER 0035 AMF CAF OHF NHF DDF
R&W CONCLUSION 34B 1807747
CROWFOOT LADY 6057S

SITZ TRAVELER 8180 AMF CAF OHF NHF DDF
S A V EMULOUS 8145 CAF
CROWFOOT LOGIC 4019P
CROWFOOT LADY 4029P

GDAR GAME DAY 449 AMF CAF OHF NHF DDF
R&W ROSEBUD 35B 1807745
SQUAW COULEE ROSEBUD 29U

BOYD NEW DAY 8005 AMF CAF OHF NHF DDF
G D A R MISS WIX 474
WINTERING HILLS PERRY 18P
SQUAW COULEE ROSEBUD 63P

BW: 86 lbs.	Adj. 205D: 666 lbs.	Jan. 11/17: 842 lbs.
EPDs BW: +1.6 P+	WW: +40 P+	YW: +70 P+
CE: +7.5 P	MCE: +6.5 P	TM: +39



*Video Sale - come early to view
the bulls on display next to the hall*





61

WCC HIGH PRIME 434D

Male XZ 434D 1916101 April 07 2016

C A FUTURE DIRECTION 5321 AMF CAF OHF NHC DDF
HIGH PRIME 4037 AMF CAF NHF DDF 1608220
 HIGH DESIGNER LADY 603

SINCLAIR EXCELLENCY 5X25 AMF CAF OHF NHF DDF
PEAKE LASS 140Z 1671462
 SQUAW COULEE LASS 53P

G A R PRECISION 1680 AMF NHC
 C A MISS POWER FIX 308 AMF
 B/R NEW DESIGN 036 AMF CAF OHF NHF DDC
 RRR 1184 CRUZ 151 SC 1676
 N BAR EMULATION EXT AMF CAF OHF NHF DDF
 IDEAL 4465 OF 6807 4286 AMF NHF
 SASKALTA OVERDRIVE 23K
 SQUAW COULEE LASS 032L

BW: 87 lbs.	Adj. 205D: 665 lbs.	Jan. 11/17: 916 lbs.			
EPDs	BW: +1.2 37%	WW: +44 28%	YW: +76 23%	Milk: +17 21%	TM: +39
	CE: +3.0 28%	MCE: +9.0 16%			

62

WCC DENSITY 438D

Male XZ 438D 1940675 April 08 2016

S A V 004 DENSITY 4336 AMF CAF OHF NHF DDF
PEAKE DENSITY 414A 1742716
 SQUAW COULEE MARYLEE 3W

S A V 004 DENSITY 4336 AMF CAF OHF NHF DDF
PEAKE ERROLINE 413B 1813280
 REMINGTON ERROLINE 235U

S A V 8180 TRAVELER 004 DMF DMF AMF CAF OHF NHF OSF DDF
 S A V MAY 7238 CAF DDF
 MYTTY IN FOCUS AMF CAF OHF NHF DDF
 SQUAW COULEE BLOSSOM 35T

S A V 8180 TRAVELER 004 DMF DMF AMF CAF OHF NHF OSF DDF
 S A V MAY 7238 CAF DDF
 S A V FINAL ANSWER 0035 AMF CAF OHF NHF DDF
 REMINGTON ERROLINE 258S

BW: 70 lbs.	Adj. 205D: 650 lbs.	Jan. 11/17: 859 lbs.			
EPDs	BW: -0.5 33%	WW: +50 22%	YW: +84 15%	Milk: +21 12%	TM: +46
	CE: +11.0 26%	MCE: +8.0 10%	<i>Recommended for Heifers</i>		



HIGH PRIME 4037
BW: +1.5 **WW:** +55 **YW:** +92 **Milk:** +21 **TM:** +49
SC: +1.14 **CE:** +5.0 **MCE:** +9.0
 High Prime sons dominate the carcass division and feed efficiency, perfect feet and legs with eye appeal and superior carcass.

63

WCC DENSITY 439D

Male XZ 439D 1940676 April 08 2016

S A V 004 DENSITY 4336 AMF CAF OHF NHF DDF
PEAKE DENSITY 414A 1742716
 SQUAW COULEE MARYLEE 3W

PEAKE RESISTOR 0137X AMF CAF NHF
PEAKE DUCHESS 402B 1813274
 PEAKE DUCHESS 113Z

S A V 8180 TRAVELER 004 DMF DMF AMF CAF OHF NHF OSF DDF
 S A V MAY 7238 CAF DDF
 MYTTY IN FOCUS AMF CAF OHF NHF DDF
 SQUAW COULEE BLOSSOM 35T

REMITALL RESISTOR 602R
 PEAKE 6228S 6540S 2U
 GDAR GAME DAY 449 AMF CAF OHF NHF DDF
 SQUAW COULEE DUCHESS 33W

BW: 82 lbs.	Adj. 205D: 665 lbs.	Jan. 11/17: 912 lbs.			
EPDs	BW: +1.6 33%	WW: +43 21%	YW: +72 13%	Milk: +23 9%	TM: +45
	CE: +5.0 25%	MCE: +4.0 8%	<i>Recommended for Heifers</i>		

64

WCC DENSITY 450D

Male XZ 450D 1940679 April 14 2016

S A V 004 DENSITY 4336 AMF CAF OHF NHF DDF
PEAKE DENSITY 414A 1742716
 SQUAW COULEE MARYLEE 3W

PEAKE DENSITY 250Z
PEAKE ROSEBUD 467B 1813326
 SQUAW COULEE ROSEBUD 15P

S A V 8180 TRAVELER 004 DMF DMF AMF CAF OHF NHF OSF DDF
 S A V MAY 7238 CAF DDF
 MYTTY IN FOCUS AMF CAF OHF NHF DDF
 SQUAW COULEE BLOSSOM 35T

S A V 004 DENSITY 4336 AMF CAF OHF NHF DDF
 DEER RIVER IDELETTE 132P
 KLUZAK TRAVELER 158E
 SQUAW COULEE ROSEBUD 004L

BW: 79 lbs.	Adj. 205D: 702 lbs.	Jan. 11/17: 855 lbs.			
EPDs	BW: +1.3 33%	WW: +49 21%	YW: +79 13%	Milk: +22 10%	TM: +47
	CE: +5.0 23%	MCE: +5.0 8%	<i>Recommended for Heifers</i>		

65

WCC DENSITY 453D

Male XZ 453D 1941759 April 16 2016

S A V 004 DENSITY 4336 AMF CAF OHF NHF DDF
PEAKE DENSITY 414A 1742716
 SQUAW COULEE MARYLEE 3W

PEAKE RESISTOR 0137X AMF CAF NHF
PEAKE BECKY 462B 1813325
 PEAKE BECKY 30Z

S A V 8180 TRAVELER 004 DMF DMF AMF CAF OHF NHF OSF DDF
 S A V MAY 7238 CAF DDF
 MYTTY IN FOCUS AMF CAF OHF NHF DDF
 SQUAW COULEE BLOSSOM 35T

REMITALL RESISTOR 602R
 PEAKE 6228S 6540S 2U
 HOFF MAGNIFY SC 1321 315
 REMINGTON BECKY 177U

BW: 72 lbs.	Adj. 205D: 675 lbs.	Jan. 11/17: 836 lbs.			
EPDs	BW: +0.5 33%	WW: +48 21%	YW: +79 12%	Milk: +21 9%	TM: +45
	CE: +8.0 25%	MCE: +7.0 7%	<i>Recommended for Heifers</i>		



66

PEAKE RESUME 233D

Male MP 233D 1937445 April 02 2016

S A V FINAL ANSWER 0035 AMF CAF OHF NHF DDF
BOYD RESUME 9008 AMF CAF NHF DDF: **1600064**
 BOYD FOREVER LADY 5125

SITZ TRAVELER 8180 AMF CAF OHF NHF DDF
 S A V EMULOUS 8145 CAF
 WULFFS EXT 6106
 S V F FOREVER LADY 57D

GDAR GAME DAY 449 AMF CAF OHF NHF DDF
PEAKE IDELETTE 267Z 1671327
 DEER RIVER IDELETTE 385R

BOYD NEW DAY 8005 AMF CAF OHF NHF DDF
 G D A R MISS WIX 474
 DEER RIVER 241J BLACK INK 331L
 DEER RIVER 011 TRAVELER 43K

BW: 88 lbs. Adj. 205D: 594 lbs. Jan. 11/17: 861 lbs.
EPDs BW: +0.7 P+ WW: +39 P+ YW: +73 P+ Milk: +23 P TM: +44
CE: +9.5 P MCE: +9.5 P

69

PEAKE RESUME 283D

Male MP 283D 1937478 April 09 2016

S A V FINAL ANSWER 0035 AMF CAF OHF NHF DDF
BOYD RESUME 9008 AMF CAF NHF DDF: **1600064**
 BOYD FOREVER LADY 5125

SITZ TRAVELER 8180 AMF CAF OHF NHF DDF
 S A V EMULOUS 8145 CAF
 WULFFS EXT 6106
 S V F FOREVER LADY 57D

O C C MOONSHINE 740M
XO CROWFOOT LASS TRADER 844U 1470580
 CROWFOOT LASS TRADER 6016S

O C C JUST RIGHT 619J OHF DDF
 O C C DIXIE ERICA 816B
 CROWFOOT MAX 1743L
 CROWFOOT HEATHER 4731P

BW: 80 lbs. Adj. 205D: 619 lbs. Jan. 11/17: 877 lbs.
EPDs BW: -0.9 P+ WW: +34 P+ YW: +68 P+ Milk: +23 P TM: +42
CE: +10.0 P MCE: +10.5 P <i>Recommended for Heifers</i>

67

PEAKE RESUME 238D

Male MP 238D 1937448 April 03 2016

S A V FINAL ANSWER 0035 AMF CAF OHF NHF DDF
BOYD RESUME 9008 AMF CAF NHF DDF: **1600064**
 BOYD FOREVER LADY 5125

SITZ TRAVELER 8180 AMF CAF OHF NHF DDF
 S A V EMULOUS 8145 CAF
 WULFFS EXT 6106
 S V F FOREVER LADY 57D

GDAR GAME DAY 449 AMF CAF OHF NHF DDF
PEAKE LASS 231A 1743625
 CROWFOOT LASS 4937P

BOYD NEW DAY 8005 AMF CAF OHF NHF DDF
 G D A R MISS WIX 474
 C&D ITS GO TIME SCC
 CROWFOOT FORKS 744K

BW: 63 lbs. Adj. 205D: 638 lbs. Jan. 11/17: 879 lbs.
EPDs BW: -4.4 P+ WW: +32 P+ YW: +65 P+ Milk: +27 P TM: +47
CE: +11.0 P MCE: +11.0 P <i>Recommended for Heifers</i>

70

PEAKE RESUME 287D

Male MP 287D 1937475 April 09 2016

S A V FINAL ANSWER 0035 AMF CAF OHF NHF DDF
BOYD RESUME 9008 AMF CAF NHF DDF: **1600064**
 BOYD FOREVER LADY 5125

SITZ TRAVELER 8180 AMF CAF OHF NHF DDF
 S A V EMULOUS 8145 CAF
 WULFFS EXT 6106
 S V F FOREVER LADY 57D

CROWFOOT EQUATION 5793R
XO CROWFOOT GV LASS 1528Y 1646516
 CROWFOOT GV LASS 6383S

O C C LEGACY 839L
 CROWFOOT FORKS 755K
 CROWFOOT 2711M
 CROWFOOT FORKS 657K

BW: 88 lbs. Adj. 205D: 640 lbs. Jan. 11/17: 915 lbs.
EPDs BW: +1.0 P+ WW: +36 P+ YW: +68 P+ Milk: +28 P TM: +48
CE: +7.0 P MCE: +8.5 P

68

PEAKE RESUME 255D

Male MP 255D 1937458 April 05 2016

S A V FINAL ANSWER 0035 AMF CAF OHF NHF DDF
BOYD RESUME 9008 AMF CAF NHF DDF: **1600064**
 BOYD FOREVER LADY 5125

SITZ TRAVELER 8180 AMF CAF OHF NHF DDF
 S A V EMULOUS 8145 CAF
 WULFFS EXT 6106
 S V F FOREVER LADY 57D

GDAR GAME DAY 449 AMF CAF OHF NHF DDF
PEAKE BLACKBIRD 229A 1743615
 DEER RIVER BLACKBIRD 292S

BOYD NEW DAY 8005 AMF CAF OHF NHF DDF
 G D A R MISS WIX 474
 G A R EVAS CONSISTENCE 3803 AMF CAF OHF NHF DDF
 DEER RIVER BLACKBIRD 161L

BW: 77 lbs. Adj. 205D: 609 lbs. Jan. 11/17: 888 lbs.
EPDs BW: -1.0 P+ WW: +38 P+ YW: +73 P+ Milk: +23 P TM: +44
CE: +9.0 P MCE: +9.5 P <i>Recommended for Heifers</i>

71

PEAKE DENSITY 286D

Male MP 286D 1937476 April 09 2016

S A V 8180 TRAVELER 004 DMF DWF AMF CAF OHF NHF OSF DDF
S A V 004 DENSITY 4336 AMF CAF OHF NHF DDF: **1266311**
 S A V MAY 7238 CAF DDF

SITZ TRAVELER 8180 AMF CAF OHF NHF DDF
 BOYD FOREVER LADY 8003
 LEACHMAN RIGHT TIME DMF AMF
 S A R PROSPECTOR MAY 9124 OHF DDF

REMITALL H RACHIS 21R AMF NHF OSF
CCL RUTH 31Y 1619768
 RIVERCREST RUTH 40J

REMITALL NIGHTHAWK 37N
 HENDERSON MISSIE 32'02
 HF WALKER 107E
 RIVERCREST RUTH 13A

BW: 82 lbs. Adj. 205D: 607 lbs. Jan. 11/17: 885 lbs.
EPDs BW: +0.9 P+ WW: +38 P+ YW: +73 P+ Milk: +19 P TM: +41
CE: -1.0 P MCE: +2.0 P



72

R&W RIGHT TIME 115D

Male WP 115D 1935302 April 23 2016

LEACHMAN RIGHT TIME DMF AMF
SHEIDAGHAN RIGHT TIME 58Z 1673710
 CRESCENT CREEK ROSEBUD 38K

PEAK DOT HOLLYWOOD 106L
SQUAW COULEE HEROINE 61U 1429969
 SASKALTA HEROINE 069K

N BAR EMULATION EXT AMF CAF OHF NHF DDF
 LEACHMAN ERICA 0025
 DOUBLE BAR ROGUE CAF OHF
 CRESCENT CREEK ROSEBUD 115F
 PEAK DOT TURBULENCE 69F
 MIA OF PEAK DOT 917H
 OLE SASKALTA BARDOLIER 37D
 SASKALTA LADY 712G

BW: 88 lbs.	Adj. 205D: 673 lbs.	Jan. 11/17: 922 lbs.			
EPDs BW: +1.6	35%	WW: +37	25%	YW: +59	15%
CE: +4.0	19%	MCE: +9.0	9%	Milk: +15	13%
			TM: +34		



73

R&W RIGHT TIME 126D

Male WP 126D 1935300 April 25 2016

LEACHMAN RIGHT TIME DMF AMF
SHEIDAGHAN RIGHT TIME 58Z 1673710
 CRESCENT CREEK ROSEBUD 38K

SUMMITCREST HI FLYER 3B18 AMF CAF OHF NHF DDF
SQUAW COULEE JULIANA 48T 1416786
 SQUAW COULEE JULIANA 31R

N BAR EMULATION EXT AMF CAF OHF NHF DDF
 LEACHMAN ERICA 0025
 DOUBLE BAR ROGUE CAF OHF
 CRESCENT CREEK ROSEBUD 115F
 HOFF HI FLYER S C 7134 AMF CAF OHF NHF DDF
 SUMMITCREST LASS 229Y
 ANGUS ACRES HEADS UP 31D
 BIEVER'S JULIANA 43E

BW: 96 lbs.	Adj. 205D: 694 lbs.	Jan. 11/17: 917 lbs.			
EPDs BW: +3.1	33%	WW: +43	22%	YW: +73	14%
CE: +0.0	20%	MCE: +7.0	10%	Milk: +15	13%
			TM: +37		



SANDY CREEK PRIDE 47'08

74

R&W RIGHT TIME 104D

Male WP 104D 1935296 April 19 2016

LEACHMAN RIGHT TIME DMF AMF
SHEIDAGHAN RIGHT TIME 58Z 1673710
 CRESCENT CREEK ROSEBUD 38K

H A IMAGE MAKER 0415 AMF CAF OHF NHF DDF
SANDY CREEK PRIDE 47'08 1433741
 SANDY CREEK PRIDE 59S

N BAR EMULATION EXT AMF CAF OHF NHF DDF
 LEACHMAN ERICA 0025
 DOUBLE BAR ROGUE CAF OHF
 CRESCENT CREEK ROSEBUD 115F
 HERO 6267 OF R R 2418
 H A RITO BLACKCAP 9038
 SANDY CREEK RIGHT TIME 8'03
 ROYAL PRIDE 2C

BW: 96 lbs.	Adj. 205D: 724 lbs.	Jan. 11/17: 938 lbs.			
EPDs BW: +2.5	35%	WW: +47	25%	YW: +75	16%
CE: +1.0	21%	MCE: +5.0	11%	Milk: +20	14%
			TM: +44		



75

R&W ALLIANCE 89D

Male WP 89D 1949030 April 12 2016

SITZ ALLIANCE 6595 DMF AMF CAF OHF NHF DDF
R&W ALLIANCE 12B 1807725
 SANDY CREEK ERROLINE 62'08

BAD LANDS AMBUSH 37N
SANDY CREEK JANETTE 42'08 1433695
 SANDY CREEK JANETTE 2'97

SITZ TRAVELER 8180 AMF CAF OHF NHF DDF
 SITZ BARBARAMERE JET 2698
 BAD LANDS AMBUSH 37N
 ASPELUND ERROLINE 34H
 HIGH VALLEY 4C6 AMBUSH AMF CAF
 BAD LANDS LADY 805H
 NUGGET 801X OF J R S AMF CAF OHF NHF DDF
 SANDY CREEK JANETTE 2'95

BW: 91 lbs.	Adj. 205D: 685 lbs.	Jan. 11/17: 954 lbs.			
EPDs BW: +1.8	P+	WW: +37	P+	YW: +70	P+
CE: +5.5	P	MCE: +8.5	P	Milk: +19	P
			TM: +36		



76

R&W RIT0Z 94D

Male WP 94D 1946910 April 13 2016

SANDY CREEK RITO 75/10
PEAKE RITO 188Z DDF 1705207
SANDY CREEK PRIDE 51'08

SINCLAIR RITO LEGACY 3R9 AMF CAF OHF DDF
SANDY CREEK JANETTE 4'05
S A V INITIATIVE 4406 AMF CAF OHF NHF DDF
SANDY CREEK PRIDE 5'05

SAR FORT ROCK 91T
PEAKE PRIDE 376Z 1671526
REMINGTON PRIDE 248S

SAR FORT ROCK 151R
SAR EUGENE 87N
SCA 3299 OF IDEAL 1418
ISLA BANK PRIDE 40M

BW: 92 lbs. Adj. 205D: lbs. Jan. 11/17: 1014 lbs.
EPDs BW: +4.2 P+ WW: +54 P+ YW: +91 P Milk: +20 P TM: +48
CE: -5.7 P MCE: +1.1 P



77

R&W TRAVELER 78D

Male XZ 78D Unregistered April 9 2016

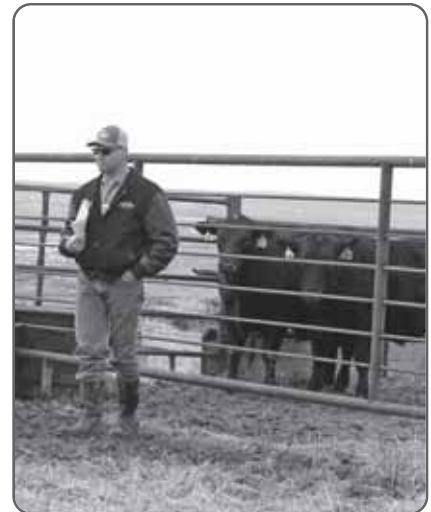
Q A S TRAVELER 23-4
GAR TRAVELER 1489 -989498
G A R BANDO 237

BAND 234 OF IDEAL 3163
Q A S BLACKBIRD EVE 601 1
TEHAMA BANDO 155
OSCAR G A R 425

REMITALL RESISTOR 602R
ANGUS COW 54A (UNREGISTERED)
PEAKE BELLE 2W

REMITALL NETWORK 1N
CAYMEN ROSE 57'01
CROWFOOT 6098S
CROWFOOT BELLE L NELLIE 6349S

BW: 93 lbs. Adj. 205D: N/A Adj. 365D: 991 lbs.



*Yearling Bulls
Delivered free within a 500 km radius*





WCC GLANWORTH 445D

Male XZ 445D 1945743 April 11 2016

TRIPLE V GLANWORTH 57U
F V GLANWORTH 41B 1798263
 F V 6595 LADY IDA 535S

MYTTY IN FOCUS AMF CAF OHF NHF DDF
PEAKE JEANNE T 506A 1742677
 PEAKE JEANNE T 38W

GLANWORTH WAIGROUP 130-03
 WW ROSEBUD 229S
 SITZ ALLIANCE 6595 DMF AMF CAF OHF NHF DDF
 F V 133H LADY IDA 242M

S A F FOCUS OF E R AMF CAF OHF NHF DDF
 MYTTY COUNTESS 906
 N BAR EMULATION EXT AMF CAF OHF NHF DDF
 CROWFOOT JEANNE T 959

BW: 93 lbs.	Adj. 205D: 779 lbs.	Jan. 11/17: 1060 lbs.
EPDs BW: +2.4	33%	WW: +48
22%	YW: +77	11%
Milk: +20	11%	TM: +44
CE: -1.0	19%	MCE: +6.0
8%		



WCC GLANWORTH 455D

Male XZ 455D 1945741 April 18 2016

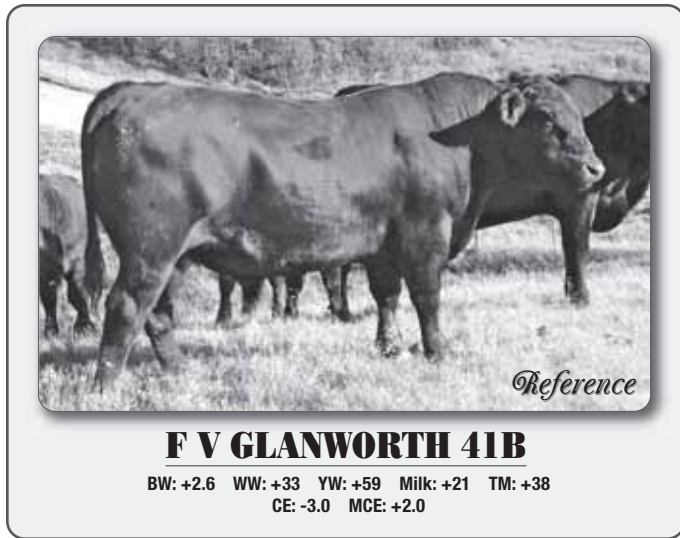
TRIPLE V GLANWORTH 57U
F V GLANWORTH 41B 1798263
 F V 6595 LADY IDA 535S

PEAKE PENDLTON 4Y AMF CAF NHF
PEAKE DUCHESS 436A 1742730
 SQUAW COULEE DUCHESS 30T

GLANWORTH WAIGROUP 130-03
 WW ROSEBUD 229S
 SITZ ALLIANCE 6595 DMF AMF CAF OHF NHF DDF
 F V 133H LADY IDA 242M

HARB PENDLETON 765 J H AMF CAF OHF NHF DDF
 SQUAW COULEE ROSEBUD 52U
 CRESCENT CREEK BRAVE HEART 35F
 BELVIN DUCHESS 21'94

BW: 98 lbs.	Adj. 205D: 695 lbs.	Jan. 11/17: 852 lbs.
EPDs BW: +4.6	32%	WW: +43
20%	YW: +70	9%
Milk: +22	9%	TM: +44
CE: -7.0	17%	MCE: +0.0
6%		



WCC PENDLETON 467D

Male XZ 467D 1940682 April 25 2016

HARB PENDLETON 765 J H AMF CAF OHF NHF DDF
PEAKE PENDLETON 408A 1742712
 SANDY CREEK ROYAL LADY 46'08

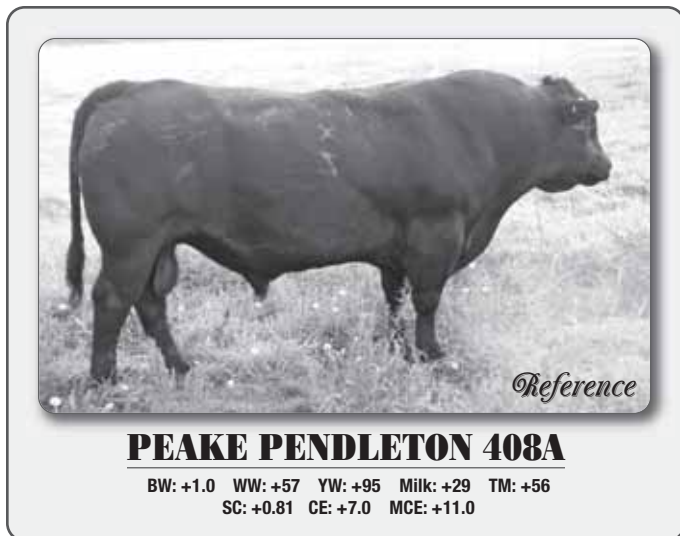
F V 20K KING 308M AMF CAF OHF NHF DDF
SQUAW COULEE ROSEBUD 35W 1488995
 SQUAW COULEE ROSEBUD 29P

S A V FINAL ANSWER 0035 AMF CAF OHF NHF DDF
 H A R B BLACK LADY 375 J H
 H A IMAGE MAKER 0415 AMF CAF OHF NHF DDF
 SANDY CREEK ROYAL LADY 67S

RAFTER S RONAN TEX 20K
 QUEEN 362E
 SANDY BAR BRAVE HEART 102K
 SQUAW COULEE ROSEBUD 21M

BW: 70 lbs.	Adj. 205D: 666 lbs.	Jan. 11/17: 861 lbs.
EPDs BW: -0.9	35%	WW: +45
23%	YW: +79	16%
Milk: +20	13%	TM: +43
CE: +14.0	21%	MCE: +14.0
10%		

Recommended for Heifers





81

PEAKE UPWARD 328D
Male MP 328D 1952029 April 17 2016

SITZ UPWARD 307R DMF AMF CAF NHF DDF
F V UPWARD 377B 1794404
F V QUEEN JESTRESS 97Y

CONNELLY ONWARD DMF AMF CAF NHF DDF
SITZ HENRIETTA PRIDE 81M
F V 20K KING 308M AMF CAF OHF NHF DDF
F V 4336 JESTRESS 547T

REMITALL H RACHIS 21R AMF NHF OSF
CCL ROSEBUD 87U 1445980
CCL ROSEBUD 40R

REMITALL NIGHTHAWK 37N
HENDERSON MISSIE 32'02
SITZ ALLIANCE 659S DMF AMF CAF OHF NHF DDF
WILLABAR ROSEBUD 119L

BW: 94 lbs.	Adj. 205D: 664 lbs.	Jan. 11/17: 964 lbs.
EPDs BW: +3.2 P+	WW: +46 P+	YW: +86 P+ Milk: +27 P TM: +52
CE: -1.5 P MCE: +4.8 P		

84

PEAKE THRILLER 346D
Male MP 346D 1949069 April 28 2016

SOUTHLAND THRILLER 83X DDF
SOUTHLAND THRILLER 15Z 1663058
SOUTHLAND BARBARA 16L

SOUTHLAND TWO FIFTY 250T
SOUTHLAND BELLE 89R
N BAR EMULATION EXT AMF CAF OHF NHF DDF
SOUTHLAND BARBARA 117J

PEAKE LEGACY 02X AMF CAF NHF
PEAKE BARBARA 337A 1743589
PEAKE DANDY 126M 21T

O C C LEGACY 839L
PEAKE 243K 35R
DEER RIVER DANDY 244N
WILLABAR BARBARA 126M

BW: 84 lbs.	Adj. 205D: 654 lbs.	Jan. 11/17: 800 lbs.
EPDs BW: +2.3 P+	WW: +30 P+	YW: +54 P+ Milk: +16 P TM: +29
CE: +2.5 P MCE: +7.0 P		

82

PEAKE UPWARD 349D
Male MP 349D 1952030 April 29 2016

SITZ UPWARD 307R DMF AMF CAF NHF DDF
F V UPWARD 377B 1794404
F V QUEEN JESTRESS 97Y

CONNELLY ONWARD DMF AMF CAF NHF DDF
SITZ HENRIETTA PRIDE 81M
F V 20K KING 308M AMF CAF OHF NHF DDF
F V 4336 JESTRESS 547T

S A V BISMARCK 568Z AMF CAF OHF NHF DDF
CCL HEROINE 43W 1502036
BROOKMORE HEROINE 25T

G A R GRID MAKER AMF CAF OHF NHF DDF
S A V ABIGALE 0451
K C F BENNETT TOTAL AMF CAF OHF NHF DDF
BROOKMORE HEROINE 59R

BW: 92 lbs.	Adj. 205D: 639 lbs.	Jan. 11/17: 859 lbs.
EPDs BW: +1.8 P+	WW: +47 P+	YW: +85 P+ Milk: +22 P TM: +46
CE: +9.0 P MCE: +10.8 P		

85

PEAKE THRILLER 331D
Male MP 331D 1949075 April 18 2016

SOUTHLAND THRILLER 83X DDF
SOUTHLAND THRILLER 15Z 1663058
SOUTHLAND BARBARA 16L

SOUTHLAND TWO FIFTY 250T
SOUTHLAND BELLE 89R
N BAR EMULATION EXT AMF CAF OHF NHF DDF
SOUTHLAND BARBARA 117J

S A V 004 DENSITY 4336 AMF CAF OHF NHF DDF
PEAKE VERNICE 258A 1743545
PEAKE VERNICE 6W

S A V 8180 TRAVELER 004 DMF AMF CAF OHF NHF OSF DDF
S A V MAY 7238 CAF DDF
CROWFOOT 6098S
CROWFOOT VERNICE 6535S CAF

BW: 88 lbs.	Adj. 205D: 642 lbs.	Jan. 11/17: 844 lbs.
EPDs BW: +2.2 P+	WW: +32 P+	YW: +56 P+ Milk: +18 P TM: +33
CE: +4.5 P MCE: +6.0 P		

83

PEAKE THRILLER 325D
Male MP 325D 1949077 April 16 2016

SOUTHLAND THRILLER 83X DDF
SOUTHLAND THRILLER 15Z 1663058
SOUTHLAND BARBARA 16L

SOUTHLAND TWO FIFTY 250T
SOUTHLAND BELLE 89R
N BAR EMULATION EXT AMF CAF OHF NHF DDF
SOUTHLAND BARBARA 117J

DEER RIVER DANDY 244N
PEAKE DANDY 24K 29T 1417075
6S DUCHESS 24K

DEER RIVER TRAVELER 132F
DEER RIVER BARBARA 58B
6S KING PIN 4G
6S DUCHESS 8E

BW: 98 lbs.	Adj. 205D: 665 lbs.	Jan. 11/17: 922 lbs.
EPDs BW: +5.1 P+	WW: +29 P+	YW: +49 P+ Milk: +19 P TM: +32
CE: -3.0 P MCE: +2.5 P		

86

PEAKE IN FOCUS 261D
Male MP 261D 1948937 April 06 2016

MYTTY IN FOCUS AMF CAF OHF NHF DDF
PEAKE IN FOCUS 503A 1742675
DEER RIVER IDELETTE 132P

S A F FOCUS OF E R AMF CAF OHF NHF DDF
MYTTY COUNTESS 906
LEACHMAN RIGHT TIME DMF AMF
DEER RIVER IDELETTE 251J

JUSTAMERE 406S BLACK 815W AMF CAF NHF
PEAKE KELLY 361B 1813549
YY KELLY 651S

JUSTAMERE 253 BADA BING 406S
JUSTAMERE BLACKBIRD 6001
CROWFOOT LOGIC 4019P
RED YY KELLY 451P

BW: 70 lbs.	Adj. 205D: 678 lbs.	Jan. 11/17: 860 lbs.
EPDs BW: -1.8 P+	WW: +34 P+	YW: +60 P+ Milk: +19 P TM: +35
CE: +12.3 P MCE: +13.3 P <i>Recommended for Heifers</i>		

2 Year Old Bulls



87 **R&W MECHANIC 54C**
Male WP 54C 1879988 April 07 2015

CROWFOOT MECHANIC 5789R WJ MECHANIC 257X 1587912 WJ ERICA 7010T	O C C MAGNUM 749M CROWFOOT BLACKBIRD 1687L O C C LEGACY 839L CROWFOOT FORKS 421K
CRESCENT CREEK BRAVE HEART 35F SQUAW COULEE ANNIE 24T 1371234 SQUAW COULEE ANNIE 31N	RITO 8094 PRAIRIELANE 2060 AMF CRESCENT CREEK BLACKCAP 112A SASKALTA OVERDRIVE 23K ANGUS ACRES LADY LAWN 15E

BW: 81 lbs. Adj. 205D: 661 lbs. Adj. 365D: 1091 lbs.
EPDs BW: +1.0 35% WW: +25 25% YW: +40 16% Milk: +12 12% TM: +25
CE: +7.0 20% MCE: +9.0 8%

90 **R&W PERRY 64C**
Male WP 64C 1877837 April 11 2015

PEAKE FINAL ANSWER 027X R&W 27X FA 140A 1755207 SQUAW COULEE PRIDE LADY 75U	S A V FINAL ANSWER 0035 AMF CAF OHF NHF DDF CROWFOOT LADY 6057S WINTERING HILLS PERRY 18P SQUAW COULEE PRIDE LADY 31P
PEAKE FINAL ANSWER 027X R&W ELSA ERICA 107A 1755138 WILLABAR ELSA ERICA 243K	S A V FINAL ANSWER 0035 AMF CAF OHF NHF DDF CROWFOOT LADY 6057S WILLABAR PIPE LINE 2H WILLABAR ELSA ERICA 133C

BW: 77 lbs. Adj. 205D: 624 lbs. Adj. 365D: 1088 lbs.
EPDs BW: +0.7 33% WW: +23 21% YW: +47 11% Milk: +17 8% TM: +29
CE: +4.0 22% MCE: +4.0 6% *Recommended for Heifers*

88 **R&W MECHANIC 130C**
Male WP 130C 1879985 April 30 2015

CROWFOOT MECHANIC 5789R WJ MECHANIC 257X 1587912 WJ ERICA 7010T	O C C MAGNUM 749M CROWFOOT BLACKBIRD 1687L O C C LEGACY 839L CROWFOOT FORKS 421K
DEER RIVER ULTRA 156L DEER RIVER IDELETTE 40R 1273517 DEER RIVER IDELETTE 177M	B T ULTRAVOX 297E AMF CAF OHF NHF DDF DEER RIVER ROSEBUD 47E G A R BINGO 4192 AMF CAF OHF NHF DDF DEER RIVER IDELETTE 42F

BW: 98 lbs. Adj. 205D: 681 lbs. Adj. 365D: 1143 lbs.
EPDs BW: +3.6 36% WW: +27 26% YW: +47 16% Milk: +17 12% TM: +31
CE: +1.0 20% MCE: +3.0 9%

91 **R&W PERRY 33C**
Male WP 33C 1877811 April 03 2015

PEAKE FINAL ANSWER 027X R&W 27X FA 140A 1755207 SQUAW COULEE PRIDE LADY 75U	S A V FINAL ANSWER 0035 AMF CAF OHF NHF DDF CROWFOOT LADY 6057S WINTERING HILLS PERRY 18P SQUAW COULEE PRIDE LADY 31P
SINCLAIR NET PRESENT VALUE AMF CAF OHF NHF DDF R&W GAY PRIDE 70A 1755162 CROWFOOT GAY PRIDE 6451S	N BAR PRIME TIME D806 AMF CAF OHF NHF DDF IDEAL 4465 OF 6807 4286 AMF NHF CROWFOOT 2711M CROWFOOT FORKS 666K

BW: 67 lbs. Adj. 205D: 654 lbs. Adj. 365D: 1142 lbs.
EPDs BW: -1.4 33% WW: +32 22% YW: +56 12% Milk: +19 9% TM: +35
CE: +10.0 24% MCE: +11.0 7% *Recommended for Heifers*

89 **R&W ROSEBUD 134C**
Male WP 134C 1883408 May 04 2015

CROWFOOT MECHANIC 5789R WJ MECHANIC 257X 1587912 WJ ERICA 7010T	O C C MAGNUM 749M CROWFOOT BLACKBIRD 1687L O C C LEGACY 839L CROWFOOT FORKS 421K
HARB PENDLETON 765 J H AMF CAF OHF NHF DDF PEAKE ROSEBUD 37Y 1604489 SQUAW COULEE ROSEBUD 004L	S A V FINAL ANSWER 0035 AMF CAF OHF NHF DDF H A R B BLACK LADY 375 J H VIKING BLACK MAGIC 120H CUDLOBE ROSEBUD 49J

BW: 95 lbs. Adj. 205D: 716 lbs. Adj. 365D: 1213 lbs.
EPDs BW: +3.1 35% WW: +35 25% YW: +59 16% Milk: +20 12% TM: +38
CE: +2.0 21% MCE: +5.0 8%

92 **R&W PERRY 50C**
Male WP 50C 1877827 April 06 2015

PEAKE FINAL ANSWER 027X R&W 27X FA 140A 1755207 SQUAW COULEE PRIDE LADY 75U	S A V FINAL ANSWER 0035 AMF CAF OHF NHF DDF CROWFOOT LADY 6057S WINTERING HILLS PERRY 18P SQUAW COULEE PRIDE LADY 31P
K C F BENNETT TOTAL AMF CAF OHF NHF DDF R&W BLACKBIRD 2A 1755244 DEER RIVER BLACKBIRD 473N	SITZ ALLIANCE 6595 DMF AMF CAF OHF NHF DDF EXT OF CONAGA 6790 DEER RIVER ULTRA 156L DEER RIVER BLACKBIRD 1J

BW: 69 lbs. Adj. 205D: 645 lbs. Adj. 365D: 1057 lbs.
EPDs BW: -0.5 33% WW: +33 22% YW: +62 12% Milk: +15 9% TM: +32
CE: +10.0 24% MCE: +10.0 7% *Recommended for Heifers*

- 2 Year Old Bulls to be picked up right after the sale -

2 Year Old Bulls

93

R&W RIGHT TIME 77C

Male WP 77C 1882627 April 15 2015

LEACHMAN RIGHT TIME DMF AMF
SHEIDAGHAN RIGHT TIME 58Z 1673710
CRESCENT CREEK ROSEBUD 38K

K C F BENNETT TOTAL AMF CAF OHF NHF DDF
PEAKE DUCHESS 189Y 1630216
DEER RIVER DUCHESS 37P

N BAR EMULATION EXT AMF CAF OHF NHF DDF
LEACHMAN ERICA 0025
DOUBLE BAR ROGUE CAF OHF
CRESCENT CREEK ROSEBUD 115F

SITZ ALLIANCE 6595 DMF AMF CAF OHF NHF DDF
EXT OF CONANGA 6790
LEACHMAN RIGHT TIME DMF AMF
DEER RIVER DUCHESS 20L

BW: 81 lbs. Adj. 205D: 696 lbs. Adj. 365D: 1164 lbs.
EPDs BW: +0.7 35% WW: +38 25% YW: +66 16% Milk: +16 14% TM: +35
CE: +7.0 21% MCE: +11.0 11% *Recommended for Heifers*

94

R&W RIGHT TIME 104C

Male WP 104C 1892097 April 23 2015

LEACHMAN RIGHT TIME DMF AMF
SHEIDAGHAN RIGHT TIME 58Z 1673710
CRESCENT CREEK ROSEBUD 38K

PEAK DOT DYNAMITE 34U
SANDY CREEK BLACKCAP 23/10 1557795
SANDY CREEK BLACKCAP 74'04

N BAR EMULATION EXT AMF CAF OHF NHF DDF
LEACHMAN ERICA 0025
DOUBLE BAR ROGUE CAF OHF
CRESCENT CREEK ROSEBUD 115F

MOHNEN DYNAMITE 1356 AMF CAF OHF NHF DDF
DIVINA OF PEAK DOT 541S
LEACHMAN RIGHT TIME DMF AMF
SANDY CREEK BLACKCAP 74'00

BW: 98 lbs. Adj. 205D: 747 lbs. Adj. 365D: 1163 lbs.
EPDs BW: +3.7 35% WW: +47 24% YW: +77 13% Milk: +18 12% TM: +42
CE: -3.0 20% MCE: +6.0 9%

95

R&W RIGHT TIME 110C

Male WP 110C 1882624 April 24 2015

LEACHMAN RIGHT TIME DMF AMF
SHEIDAGHAN RIGHT TIME 58Z 1673710
CRESCENT CREEK ROSEBUD 38K

S A V NET WORTH 4200 AMF CAF OHF NHF DDF
PEAKE ANNIE K 09X 1571222
6S ANNIE K 11J

N BAR EMULATION EXT AMF CAF OHF NHF DDF
LEACHMAN ERICA 0025
DOUBLE BAR ROGUE CAF OHF
CRESCENT CREEK ROSEBUD 115F

S A V 8180 TRAVELER 004 DMF DNF AMF CAF OHF NHF OSF DDF
S A V MAY 2410
6S KING PIN 4G
6S ANNIE K 19F

BW: 76 lbs. Adj. 205D: 691 lbs. Adj. 365D: 974 lbs.
EPDs BW: +0.1 35% WW: +37 25% YW: +64 15% Milk: +19 13% TM: +38
CE: +8.0 21% MCE: +10.0 10% *Recommended for Heifers*

96

R&W RIGHT TIME 118C

Male WP 118C 1882625 April 25 2015

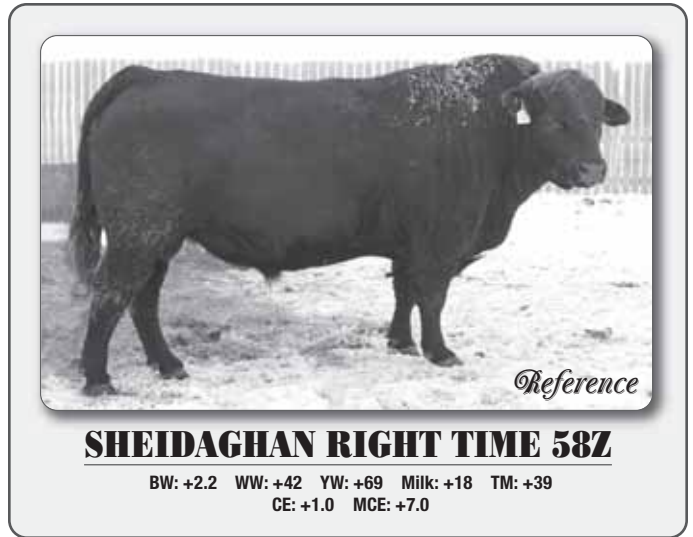
LEACHMAN RIGHT TIME DMF AMF
SHEIDAGHAN RIGHT TIME 58Z 1673710
CRESCENT CREEK ROSEBUD 38K

SANDY CREEK INITIATIVE 69T
SANDY CREEK ANNIE 9/10 1557815
SANDY CREEK ANNIE 20T

N BAR EMULATION EXT AMF CAF OHF NHF DDF
LEACHMAN ERICA 0025
DOUBLE BAR ROGUE CAF OHF
CRESCENT CREEK ROSEBUD 115F

S A V INITIATIVE 4406 AMF CAF OHF NHF DDF
SANDY CREEK PRIDE 58'02
H A IMAGE MAKER 0415 AMF CAF OHF NHF DDF
SANDY CREEK ANNIE 2'05

BW: 74 lbs. Adj. 205D: 652 lbs. Adj. 365D: 1002 lbs.
EPDs BW: -0.7 35% WW: +37 24% YW: +63 13% Milk: +17 12% TM: +36
CE: +10.0 19% MCE: +13.0 8% *Recommended for Heifers*



SHEIDAGHAN RIGHT TIME 58Z

BW: +2.2 WW: +42 YW: +69 Milk: +18 TM: +39
CE: +1.0 MCE: +7.0

97

R&W RIGHT TIME 91C

Male WP 91C 1882620 April 21 2015

LEACHMAN RIGHT TIME DMF AMF
SHEIDAGHAN RIGHT TIME 58Z 1673710
CRESCENT CREEK ROSEBUD 38K

REMITALL RESISTOR 602R
PEAKE DUCHESS 0109X 1571294
PEAKE DANDY 24K 29T

N BAR EMULATION EXT AMF CAF OHF NHF DDF
LEACHMAN ERICA 0025
DOUBLE BAR ROGUE CAF OHF
CRESCENT CREEK ROSEBUD 115F

REMITALL NETWORK 1N
CAYMEN ROSE 57'01
DEER RIVER DANDY 244N
6S DUCHESS 24K

BW: 72 lbs. Adj. 205D: 733 lbs. Adj. 365D: 1090 lbs.
EPDs BW: +0.8 35% WW: +38 24% YW: +63 13% Milk: +19 13% TM: +38
CE: +6.0 19% MCE: +8.0 9% *Recommended for Heifers*

98

R&W RIGHT TIME 108C

Male WP 108C 1882623 April 24 2015

LEACHMAN RIGHT TIME DMF AMF
SHEIDAGHAN RIGHT TIME 58Z 1673710
CRESCENT CREEK ROSEBUD 38K

DEER RIVER DANDY 244N
PEAKE DANDY 19F 24T 1417067
6S ANNIE K 19F

N BAR EMULATION EXT AMF CAF OHF NHF DDF
LEACHMAN ERICA 0025
DOUBLE BAR ROGUE CAF OHF
CRESCENT CREEK ROSEBUD 115F

DEER RIVER TRAVELER 132F
DEER RIVER BARBARA 58B
JOHNSTON VALOR 415D
DOUBLE AA ANNIE K 522'93

BW: 89 lbs. Adj. 205D: 703 lbs. Adj. 365D: 1144 lbs.
EPDs BW: +2.3 34% WW: +33 23% YW: +52 13% Milk: +15 13% TM: +32
CE: +2.0 19% MCE: +8.0 9%

99

R&W RITO 138C

Male WP 138C 1879998 May 06 2015

SANDY CREEK RITO 75/10
PEAKE RITO 188Z DDF 1705207
SANDY CREEK PRIDE 51'08

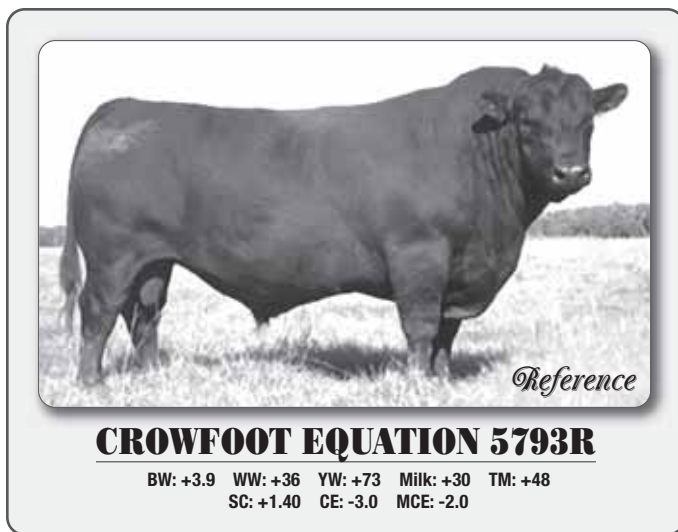
G A R EVAS CONVERGENCE 3403 AMF
DEER RIVER BLACKBIRD 95S 1351091
DEER RIVER TRAVELER 47K

SINCLAIR RITO LEGACY 3R9 AMF CAF OHF DDF
SANDY CREEK JANETTE 4'05
S A V INITIATIVE 4406 AMF CAF OHF NHF DDF
SANDY CREEK PRIDE 5'05

EMULATION N BAR 5522
G A R EVAS R R TRAVELER 511
G D A R TRAVELER 011
DEER RIVER BLACKBIRD 260H

BW: 94 lbs. Adj. 205D: 740 lbs. Adj. 365D: 1294 lbs.
EPDs BW: +3.0 35% WW: +49 23% YW: +85 13% Milk: +19 11% TM: +44
CE: +2.0 21% MCE: +4.0 8%

2 Year Old Bulls



CROWFOOT EQUATION 5793R

BW: +3.9 WW: +36 YW: +73 Milk: +30 TM: +48
SC: +1.40 CE: -3.0 MCE: -2.0

100

PEAKE EQUATION 258C

Male MP 258C 1877120 April 14 2015

O C C LEGACY 839L
CROWFOOT EQUATION 5793R 1254914
CROWFOOT FORKS 755K

O C C ECHELON 857E OHF DDF
O C C DIXIE ERICA 960E
TOMWALL PIED PIPER 413
GLADWALL B REV ERICA 7289

CROWFOOT 5456R
CROWFOOT BLACKBIRD 9175W 1504773
CROWFOOT BLACKBIRD 6374S

O C C HUNTER 928H AMF NHF
CROWFOOT WJ BLACKLADY 1528L
CROWFOOT 3199N
CROWFOOT BLACKBIRD 2785M

BW: 98 lbs. Adj. 205D: 663 lbs.

EPDs BW: +3.6 36% WW: +29 26% YW: +60 20% Milk: +21 19% TM: +36

CE: -1.0 21% MCE: +0.0 15%

103

PEAKE EQUATION 294C

Male MP 294C 1877145 April 20 2015

O C C LEGACY 839L
CROWFOOT EQUATION 5793R 1254914
CROWFOOT FORKS 755K

O C C ECHELON 857E OHF DDF
O C C DIXIE ERICA 960E
TOMWALL PIED PIPER 413
GLADWALL B REV ERICA 7289

WILLABAR NEW TREND 188K
WILLABAR BARBARA 126M 1137089
WILLABAR BARBARA 116K

WILLABAR NEW TREND 77H
WILLABAR COUNTESS 69'96
WILLABAR JIMBO 124H
WILLABAR BARBARA 6D

BW: 66 lbs. Adj. 205D: 608 lbs.

EPDs BW: -2.4 37% WW: +20 27% YW: +41 20% Milk: +23 20% TM: +33

CE: +11.0 22% MCE: +8.0 15%

Recommended for Heifers

101

PEAKE EQUATION 261C

Male MP 261C 1877118 April 14 2015

O C C LEGACY 839L
CROWFOOT EQUATION 5793R 1254914
CROWFOOT FORKS 755K

O C C ECHELON 857E OHF DDF
O C C DIXIE ERICA 960E
TOMWALL PIED PIPER 413
GLADWALL B REV ERICA 7289

CROWFOOT 8022U
XO CROWFOOT LOVEMERE PET 061X 1560968
CROWFOOT 3778N

HILLFIRE LEGACY 422 AMF
CROWFOOT BLACKBIRD 1687L
BASIN EXPEDITION K47
CROWFOOT FORKS 774K

BW: 90 lbs. Adj. 205D: 635 lbs.

EPDs BW: +4.0 36% WW: +29 26% YW: +58 18% Milk: +22 19% TM: +37

CE: -1.0 21% MCE: +2.0 15%

104

PEAKE EQUATION 323C

Male MP 323C 1877151 April 27 2015

O C C LEGACY 839L
CROWFOOT EQUATION 5793R 1254914
CROWFOOT FORKS 755K

O C C ECHELON 857E OHF DDF
O C C DIXIE ERICA 960E
TOMWALL PIED PIPER 413
GLADWALL B REV ERICA 7289

G A R EVAS CONSISTENCE 3803 AMF CAF OHF NHF DDF
DEER RIVER BLACKBIRD 292S 1351227
DEER RIVER BLACKBIRD 161L

EMULATION N BAR 5522
G A R EVAS R R TRAVELER 511
DEER RIVER 044 TRAVELER 161J
DEER RIVER BLACKBIRD 16Z

BW: 98 lbs. Adj. 205D: 687 lbs.

EPDs BW: +2.5 37% WW: +37 27% YW: +67 19% Milk: +18 21% TM: +37

CE: -1.0 22% MCE: +1.0 16%

102

PEAKE EQUATION 270C

Male MP 270C 1877163 April 15 2015

O C C LEGACY 839L
CROWFOOT EQUATION 5793R 1254914
CROWFOOT FORKS 755K

O C C ECHELON 857E OHF DDF
O C C DIXIE ERICA 960E
TOMWALL PIED PIPER 413
GLADWALL B REV ERICA 7289

CROWFOOT LOGIC 4019P
YY MEADOW 624S 1307357
RED YY MEADOW 424P

O C C LEGACY 839L
RED CROWFOOT KARUBA 2019M
RED YY SPECIAL BLEND 948K
RED CRIPPS MAX'S EDGE 924J

BW: 88 lbs. Adj. 205D: 690 lbs.

EPDs BW: +0.7 37% WW: +26 28% YW: +52 20% Milk: +23 20% TM: +36

CE: +3.0 23% MCE: +2.0 16%

105

PEAKE EQUATION 342C

Male MP 342C 1877159 May 20 2015

O C C LEGACY 839L
CROWFOOT EQUATION 5793R 1254914
CROWFOOT FORKS 755K

O C C ECHELON 857E OHF DDF
O C C DIXIE ERICA 960E
TOMWALL PIED PIPER 413
GLADWALL B REV ERICA 7289

DEER RIVER DANDY 244N
PEAKE DANDY 64H 23T 1417069
WHS HOLLY 64H

DEER RIVER TRAVELER 132F
DEER RIVER BARBARA 58B
MLA IMAGE 2D
WHS PRIDE 111E

BW: 98 lbs. Adj. 205D: 734 lbs.

EPDs BW: +3.6 35% WW: +33 24% YW: +56 17% Milk: +23 19% TM: +40

CE: +0.0 P MCE: +2.0 P

- 2 Year Old Bulls to be picked up right after the sale -

2 Year Old Bulls



LOT 108



Reference

SOUTHLAND THRILLER 15Z

BW: +3.6 WW: +25 YW: +44 Milk: +15 TM: +26
SC: +0.61 CE: +2.0 MCE: +8.0

106

PEAKE EMULATION 226C

Male MP 226C 1885652 April 07 2015

N BAR EMULATION EXT AMF CAF OHF NHF DDF
PEAKE EMULATION EXT 121Z 1671431
YY MEADOW 624S

EMULATION N BAR 5522
N BAR PRIMROSE 2424 OHF
CROWFOOT LOGIC 4019P
RED YY MEADOW 424P

SINCLAIR NET PRESENT VALUE AMF CAF OHF NHF DDF
PEAKE LIZA 264A 1743631
WHS LIZA 75L

N BAR PRIME TIME D806 AMF CAF OHF NHF DDF
IDEAL 4465 OF 6807 4286 AMF NHF
ANGUS ACRES IRISH WIT 83D
WHS BLK JANE 56F

BW: 89 lbs. Adj. 205D: 704 lbs.

EPDs BW: +0.5 34% WW: +26 23% YW: +47 13% Milk: +19 11% TM: +32

CE: +5.0 25% MCE: +6.0 9%

109

PEAKE THRILLER 308C

Male MP 308C 1886319 April 23 2015

SOUTHLAND THRILLER 83X DDF
SOUTHLAND THRILLER 15Z 1663058
SOUTHLAND BARBARA 16L

SOUTHLAND TWO FIFTY 250T
SOUTHLAND BELLE 89R
N BAR EMULATION EXT AMF CAF OHF NHF DDF
SOUTHLAND BARBARA 117J

CROWFOOT EQUATION 5793R
XO CROWFOOT GV LASS 1528Y 1646516
CROWFOOT GV LASS 6383S

O C C LEGACY 839L
CROWFOOT FORKS 755K
CROWFOOT 2711M
CROWFOOT FORKS 657K

BW: 98 lbs. Adj. 205D: 717 lbs.

EPDs BW: +3.8 34% WW: +28 23% YW: +47 12% Milk: +19 11% TM: +33

CE: +0.0 18% MCE: +5.0 8%

107

PEAKE EMULATION 318C

Male MP 318C 1885657 April 26 2015

N BAR EMULATION EXT AMF CAF OHF NHF DDF
PEAKE EMULATION EXT 121Z 1671431
YY MEADOW 624S

EMULATION N BAR 5522
N BAR PRIMROSE 2424 OHF
CROWFOOT LOGIC 4019P
RED YY MEADOW 424P

S A V 004 DENSITY 4336 AMF CAF OHF NHF DDF
PEAKE VERNICE 258A 1743545
PEAKE VERNICE 6W

S A V 8180 TRAVELER 004 DMF DMF AMF CAF OHF NHF OSF DDF
S A V MAY 7238 CAF DDF
CROWFOOT 6098S
CROWFOOT VERNICE 6535S CAF

BW: 90 lbs. Adj. 205D: 676 lbs.

EPDs BW: +1.2 34% WW: +28 23% YW: +52 13% Milk: +18 11% TM: +32

CE: +5.0 25% MCE: +6.0 9%

110

PEAKE THRILLER 322C

Male MP 322C 1885895 April 27 2015

SOUTHLAND THRILLER 83X DDF
SOUTHLAND THRILLER 15Z 1663058
SOUTHLAND BARBARA 16L

SOUTHLAND TWO FIFTY 250T
SOUTHLAND BELLE 89R
N BAR EMULATION EXT AMF CAF OHF NHF DDF
SOUTHLAND BARBARA 117J

REMITALL H RACHIS 21R AMF NHF OSF
CCL BRIDE 33U 1445936
LLB BRIDE 375P DDF

REMITALL NIGHTHAWK 37N
HENDESON MISSIE 32'02
BON VIEW NEW DESIGN 1407 AMF CAF OHF NHF DDF
ABEL BRIDE 38M

BW: 95 lbs. Adj. 205D: 661 lbs.

EPDs BW: +3.7 35% WW: +34 23% YW: +62 12% Milk: +16 12% TM: +33

CE: -1.0 19% MCE: +7.0 9%

108

PEAKE BISMARCK 321C

Male MP 321C 1885668 April 27 2015

G A R GRID MAKER AMF CAF OHF NHF DDF
S A V BISMARCK 5682 AMF CAF OHF NHF DDF 1369591
S A V ABIGALE 0451

G D A R TRAVELER 044 AMF CAF OHF NHF DDF
G A R PRECISION 2536 AMF NHF
SCHOENES FIX IT 826 AMF CAF OHF NHF DDF
S A V ABIGALE 6062 OHF

S A V NET WORTH 4200 AMF CAF OHF NHF DDF
PEAKE DUCHESS 035X 1571240
6S DUCHESS 9L

S A V 8180 TRAVELER 004 DMF DMF AMF CAF OHF NHF OSF DDF
S A V MAY 2410
IDEAL 1418 OF 8103 4286 AMF CAF OHF NHF DDF
6S DUCHESS 4B

BW: 100 lbs. Adj. 205D: 713 lbs.

EPDs BW: +4.0 38% WW: +46 29% YW: +83 23% Milk: +22 22% TM: +45

CE: +2.0 30% MCE: +8.0 19%

Happy Trails

*See you again
next year!*



HAND HILLS STAMPEDE

by Arthur Peake - 1866 - 1947
Pioneer in the Dorothy Area

At Peake's old ranch we had a feed
Then started out for the Stampede;
Jack Miller's ranch at Handhills Lake
Our camping ground we thought we'd make.

Duff took the wagon up the hill
And with him rode old Uncle Bill
Astride old Spot and then you know
Red Hodgson with his radio.

And Jimmy Scorpe on old Clyde
Was putting on a lot of side
When Nelson on his little mare
Stampeded past with tail in air.

Jack on Dixie feeling gay
To Jap was pointing out the way
The Morton girls from the Two-Bar
Were riding with their own papa.

Young Tom on Curley gave a shout
And said, "I'm going to cut them out,"
And really he did just begin to
When up came Walter on his pinto.

Just then they caught up with Jack Fable,
Who said, "How is your sister Mabel?"
They answered, "She is fine and dandy,
She's riding just behind with Andy."

Mamie's horse then took a fall
But lord she wasn't hurt at all;
High riding Tommy on the gallop
Got there first and picked her up.

And Proudfoot said, "It's very clear,
She does it better every year."
They passed Dan Plumps' and took a rest
And waited for him while he dressed.

Then up came Mark with his old car
A dozen kids and their mama;
Some sat behind upon a bench
And each one held a monkey wrench.

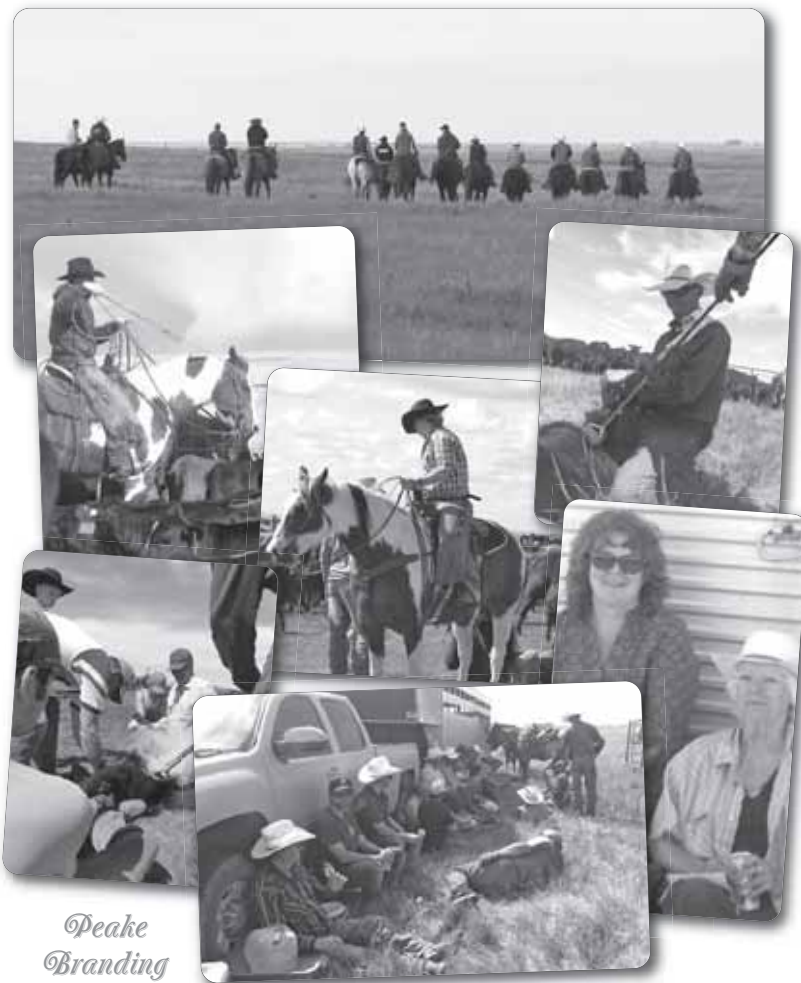
They passed Kinnimont riding slow,
He said, "it's pretty hot you know."
The farmers' cars kept passing by
And sometimes made the horses shy.

Says Pete, "I wish their tires would bust
They sure throw up an awful dust."
In Cowan's Lease they passed old Hugh,
The Missus, Fred and Mildred too.

Some guy just shouted out, "Hello,
I guess you'll get there, weather or no."
Where the road allowance did begin
They met the cowboys stringin' in.

Sometimes two men upon one horse
But both had chaps and spurs of course.
They hurried up 'twas getting late
And passed George Shultz right at the gate.

Setting down upon a log
He shouted out, "They're here! Hot Dog!"



Peake
Branding





NVC
Newell Veterinary Clinic

Supporting
ranchers since
1951

1103 2 St W
Brooks, AB T1R-1B4
403-362-3273
newellvc@hotmail.com



Hanna Building Supplies

Box 2200, 408-5th St. E
Hanna, AB T0J 1P0

403-854-2802

Owen Syverson
Territory Manager



1475 Wheatland Trail
Strathmore, AB T1P 1K1

Cell: (403) 501-9102
Fax: (403) 378-3681
Toll Free: (800) 266-9365
Res: (403) 378-3560

e-mail: owen.syverson@nutreco.ca



Landmark Feeds

nutreco
Nutreco Canada Inc.

*Please bring this catalog
with you to the Sale*

PEAKE
RANCHING
3rd Annual **HARDGRASS**
Bull Sale
Ranch Raised... Ranch Ready

Terms & Conditions

TERMS OF SALE: The terms of the sale are cash or cheque, payable at par at the sale location. The right of property shall not pass until after settlement has been made; no invoicing on buyers in attendance, unless previous arrangements have been made. Every animal sells to the highest bidder and in case of disputes, the auctioneer's decision will be final. We reserve the right to withhold animals from export shipment for whom payments have not been received prior to departure times.

BREEDING GUARANTEE: All purebred cattle are sound and right and sell with a responsible breeder guarantee of satisfaction. In the event of any unlikely dispute, the regular terms and conditions, standard with the Canadian Aberdeen Angus Association, shall apply. The consignors will not, however, provide replacement or adjustment for physical injury or mismanagement. We therefore stress the importance of insurance on bulls. At no time shall the seller's liability exceed the purchase price of any animal.

CATTLE INSPECTION: All carry identity tags, corresponding to Sale Lot Numbers. All shall be available for inspection prior to the sale.

ANNOUNCEMENTS: Errors discovered in the catalogue will be corrected from the auction stand at sale time and will take precedence over the printed matter in the catalogue.

SIGHT UNSEEN BIDS: May be entrusted in complete confidence to any of the consignors, sale staff listed or to Douglas J. Henderson & Associates Ltd.

INSURANCE: Ownership risk to purchaser commences when the Auctioneer's hammer falls. Livestock coverage will be available at the clerks desk from representatives on Sale Day, also from the Sales Management.

ALL PERSONS who attend the Sale do so at their own risk, and the owners, Management and Sale Staff assume no liability, legal or otherwise, for property loss or for any accidents that may occur.

DjH Douglas J. Henderson
& Associates Ltd.
P.O. Box 5900, Lacombe, Alberta T4L 1X4



RETURN POSTAGE GUARANTEED
PORT DE RETOUR GARANTI

PEAKE RANCHING

3rd Annual **HARDGRASS**

Bull Sale

Ranch Raised... Ranch Ready



Monday
MARCH 6 2017

1 pm at the
Homestead Coulee Hall
55.7 km East of Drumheller on Hwy. 570